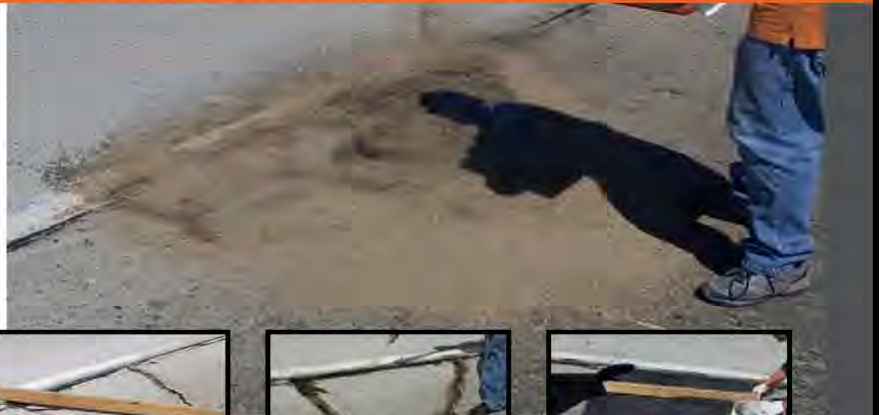


# CONCRETE WELDER



**CONCRETE WELDER** is a very thin, rapidly setting, amber-colored polymer for concrete-slab stabilization and thin concrete crack repair.

When combined with aggregates, Concrete Welder can restore structure where absent in 2nd and 3rd stage cracked slabs very cost effectively, and in a fraction of the time of normal demolition and removal of an existing broken slab. Concrete Welder is packaged in 21-oz. cartridges for hand application or a 10-gallon kit, 30-gallon kit, or 100-gallon kit for machine application.

**CONCRETE WELDER 10-MINUTE REPAIR KIT** provides a quick and simple repair product for concrete cracks and minor damage. The liquid penetrates into small cracks where water would go. It forms a high-strength bond that sets up quickly to form a waterproof seal, preventing further damage. In minutes cracks are repaired, preventing larger and more costly repairs in the future.

## ROKLIN CONCRETE SLAB STABILIZATION TECHNIQUE

Roklin Systems Inc.'s method of restoring structure to compromised slabs uses a fraction of the time of conventional repairs at a fraction of the cost of full-depth replacement. With minimal or no prep required, using rapid-setting polymers and polymer-coated aggregate, slabs can be restored and returned to traffic in as little as one hour. The process, known as "Concrete Welding" can extend the life of the slab by as much as five years, subject to the existing conditions, the type of loads and ADT (Average Daily Traffic), as shown here on the Northbound Interstate 5 through Valencia, California.



Flip switch to the "start" position and turn speed dial to "10." Check the ratio on both "A" and "B" polymer by putting a small amount into a cup. Watch to make sure both sides flow evenly.



Allow cup to sit for approximately 3 minutes and ensure that material has hardened.



Clean the area, making sure there is no debris, moisture or dust. Sweep or use a small hand-blower. There is no need to remove broken concrete that is larger than 1/4 inch.



Stabilize rocking slab by injecting Concrete Welder into the joint until the slab is stabilized. (If not stabilized, the slab will be rocked by vehicles passing in adjacent lane.) Do not overfill.



Flood with Concrete Welder.



Cover with sand.

Distributor

Brewer Cote of Arizona "The Pavement Maintenance Specialists"

5226 West Missouri Avenue, Glendale Arizona 85301

www.brewercoteaz.com Tel. 623-931-3728 Toll 888-931-3728 Fax 623-842-0714 sales@brewercoteaz.com