

Brewer Cote *of Arizona*



**FOR
YOUR
FREE
SAMPLE
TODAY**

Acrylic Traffic Paint

This fast drying Modified Latex Paint has been used Extensively in the Southwest by Airports, Contractors and Municipalities. It was formulated for extreme weather conditions, high traffic and forms a tough durable oil resistant finish. Recommended for, interior and exterior use, on streets, parking lots, tennis courts, factory floors, and garages.

	Characteristics	Test	Specifications
Coverage :	20 mils wet film thickness.		Min/Max
(Estimated)	3" Line - 300 In/ft per gal.	% Non-Volatiles	58% - 65%
	4" Line - 225 In/ft per gal.	Weight Per gal.	11 lbs Min
	5" Line - 180 In/ft per gal.	Viscosity CPS	5000 - 7500
	6" Line - 150 In/ft per gal.	Paint PH	9.00 Min
* Coverage will vary due to pavement porosity and thickness		Water Resistance 1000 cycles	Pass
		Scrub Resistance 1000 cycles	Pass

Method of Application : Brush, roller, spray gun and automatic striping machine.

Preparation & Limitations : Surface must be clean and dry. All oil and grease must be removed before painting for best results. Do not apply when temperature is to fall below 50° F and rain is expected.

Drying Time : Will set in 10 min. based on 77° F and will dry in less than 30 min. Humidity and temperature greatly effect cure time and should be tested for trafficability before traffic resumes.

Dilution: Stir well and apply at package consistency if using brush or roller. If applied by spraying, strain and dilute up to 10% water if needed depending on the coverage rate required and equipment.

Weight by Color :	White	Yellow	Blue	Red
5 gal Pails	64 lbs	57 lbs	57 lbs	57 lbs
55 gal Drums	720 lbs	644 lbs	644 lbs	644 lbs

* Brewer Cote can Customize Paint Colors to meet your Specific needs

Clean Up : Water before dry, a suitable paint remover or Biodegradable solvent

Caution

Keep from children, freezing and direct sunlight. Container should be kept closed when not in use.



Brewer Cote® Inductive Cold Pour Loop Sealant

Brewer Cote® Inductive Cold Pour, Single Component Loop Sealant is a one component pourable, sand and acrylic modified asphalt emulsion for the use in sealing inductive wire loop, slots in asphalt and Portland Cement concrete. This specially formulated sealant is acrylic modified to give greater flexibility in both hot & cold climates. It also skins over quickly to form a waterproof barrier. Brewer Cote's Inductive Cold Pour Loop Sealant Meets & Exceeds Federal / State Specifications in Arizona & other States.

ADVANTAGES

- Meets all Federal, State FAA, & Military Specifications
- Resists Hydrocarbons, Gas, Oil, and Chemicals
- Spray or Squeegee application for Customized Results
- Highly Resistant to Ultra Violet Light and Water Degradation
- Tough Durable Finish that is Skid Resistant and Reduces Cleaning Costs
- Beautifies your Pavement Investment
- Eliminates Raveling and is Non-Scuffing

Brewer Cote of Arizona
The Pavement Maintenance Specialists

Brewer Cote® Inductive Cold Pour Loop Sealant

Method of Application

Ready to use. B.C. Loop Sealant can be applied by pressure feed, pump, directly from container, or by pour pot. Leave pail upside down prior to use. Mix well with mechanical mixer to make all product uniform and sand is disposed. Excess should be removed immediately by V-Squeegee to force material into loop and to avoid excess waste

Coverage

Approximately 15 ln/ft per gal. based on 1/4" wide by 2" deep slots. Coverage will vary depending on width/depth of slot and type of application method. It is not recommended for slots bigger than 5/8".

*Two coats are recommended on sealed pavements, consult project manager.

Weather Limitations

For best results, do not apply on rainy days or when the temperature is expected to drop below 45° F during the next 24 hours. Pavement slots must be free of dust, dirt and water prior to application. Use Compressed Air before applying sealant. Slot may be slightly damp to help penetration of sealant.

Drying time

Tack free in one hr. under normal conditions, 77° F , @ 50% humidity. If traffic is unavoidable, broadcast fine Dry sand over surface. Drying time will vary depending on surface temperatures. Test for traffic ability before opening.

Clean up

Water prior to Drying
Use Biodegradable PRISM®
or suitable solvent

Color

Black

Packaging

5 gal. Pails / 53 lbs.
with dissolvable liners

Specifications

<u>Test</u>	<u>Method</u>	<u>Min / Max</u>	<u>Results</u>
Viscosity Saybolt Furol	ASTM-D 244	25 -150	125.0 sec. range
Retained on No. 20 Sieve % max	ASTM-D 244 (1)	.10	.02
Particle Charge	ASTM-D 244	Positive	Positive

Specifications on Emulsion

(Crack Filling)

Pumping Stability	2	Pass	Pass
Settlement, 5 Days, % max	D 244	5.0	Pass
Residue, % max	D 244 (3)	60.0	62.0

Specifications on Residue

<u>Test</u>	<u>Method</u>	<u>Min / Max</u>	<u>Results</u>
Viscosity, 60° F. Centistokes, range	D 2170	100-9500	3.90
Maltene Distribution, Ratio, Range	D 2006-70 (4)	0.7-1.4	1.1
PC/S, Ratio, Min	D 2006-70 (4)	0.50	0.80
Asphaltenes, % max	D 2006-70	11.0	9.50

5226 West Missouri Avenue Glendale Arizona 85301
Tel 623-931-3728 Toll 888-931-3728 Fax 623-842-0714
www.brewercoteaz.com sales@brewercoteaz.com

Thermoplastic Technology.....Industry Breakthrough



CRACK•RITE™
The Pavement Life Extender™

CRACK•STIX™

Direct Heat "Rubberized" Crack & Joint Sealant

PATENTED
Elastomeric Compound
Polymer Modified

Multi-Use For Asphalt & Concrete
Meets ASTM/Federal Specifications
Super Resilient...Permanent Bond to Sidewalls
100% Water Tight Seal
Traffic Ready In 20 Minutes
Lifetime Guarantee

1 1/2" Diameter
(Splice for narrow cracks or
double over for larger cracks)

Seals In It...
Not On It...



Professional Results...No Melters...No Pour Pots
The Only Permanent Crack Repair

CRACK•STIX™

DIRECT HEAT "Rubberized" Crack & Joint Sealant

Technology Breakthrough...

Now for the first time, contractor-type results in 3 easy steps using 3 tools. **CRACK•STIX™** come in one multipurpose size. They are User Friendly & Ready-To-Use: no mixing, nothing to add, just uncoil, cut-to-length, pack & heat. **CRACK•STIX™** are flexible & can be stretched & shaped to custom fit the repair. The rubberized compound melts/liquefies instantly & cures quickly (traffic ready in

less than 20 minutes). The self-leveling sealant goes **inside the crack...not over the crack...less waste**, no tracking or unsightly residue. The Multi-Use formula can be used on asphalt & concrete pavement.

Why HOT, Direct HEAT Process?

In the past, most contractors have had no choice but to use cold-pour or caulking-type fillers. Cold applied products fill from the bottom-up & do not

permanently bond/seal to the crack sidewalls. **CRACK•STIX™** are hot applied, using a patented, direct heat process. **CRACK•STIX™** form a **permanent bond** to the sidewalls of the crack or joint & provides a (liquid rubber) **100% water-tight seal**. This seal will remain flexible & intact through the winter & summer expansion/contraction cycles.

Permanent Pavement Repair

Elastomeric Compound

1/2 inch Diameter

Melt-Away-Wrap... Keeps hands clean



Easy to use... Low Labor Costs!

Self leveling, No tracking

Pliable...Conforms to shape of crack

Multi Use Formula...Professional Results...



Asphalt to Concrete



Asphalt to Asphalt



Concrete to Concrete

3 Easy Steps...

Clean it... Take a screwdriver & scratch out all debris from inside the crack, then take a whisk broom & sweep it clean. **Crack must be dry.**

Pack it... uncoil & cut the appropriate size stix & shape/pack into crack with fingertip pressure. Using the screwdriver, press the stix into crack approximately 1/16" to 1/8" below actual pavement surface level. To achieve a neat overall appearance, do not overfill crack. Stretch for narrow cracks, double over for wider cracks. **The material seals In It...Not On It.**

Melt it... take propane torch & light it. Adjust bright blue part of flame to 1" long. Holding the flame 1-1/2" from stix, move the flame from side to side in a slow & even motion, heating no more than one foot at a time (melt stick until liquid) Seal cures in 20 minutes & is ready for traffic.

Used By:

Parking Lot Contractors
Paving Contractors
Driveway Contractors
Homeowners
DPW & DOT
Water Authorities
Municipalities
Maintenance Engineers
Park & Recreation Depts.

Used For:

Cracks & Joints
Expansion / Transition Joints
Transverse / Longitudinal Joints
Utility Cuts / Control Joints
Traffic Loops, Hydrants
Parking Lot, Sidewalk, Wheel Chair Ramps
Golf Cart Paths
Linear Parks

Distributor

Brewer Cote of Arizona

5226 W Missouri Avenue, Glendale, AZ 85301

Tel. 623-931-3728 Toll 888-931-3728 Fax 623-842-0714

www.brewercoteaz.com

sales@brewercoteaz.com

CRACK•RITE
The Pavement / Life Extender™

CRACK•STIX™



QUIK-MARK™

SOLVENT & WATER BASED INVERTED MARKING PAINTS

On The Job - On the Mark!

QUIK-MARK™ will Help you do the job Right! From Surveying to Public Utilities Work, Underground Hazard Identification to Construction, Asphalt, Concrete and Grounds Keeping. QUIK-MARK™ is on the Mark! Cleanly and Professionally!

- ☞ Large Assortment of Colors to choose from
- ☞ High-Solids formulation for Bold, Bright, Visible Markings
- ☞ Convenient Spray-Thru™ cap and Non-clogging Tip
- ☞ One-Stroke Application & One-Coat Coverage
- ☞ Use on Gravel, Soil, Grass, Stone, Concrete, Asphalt, Pavement & Other Surfaces
- ☞ Application Marking Wands Available



Distributor

Brewer Cote of Arizona "The Pavement Maintenance Specialists"
5226 W Missouri Avenue, Glendale Arizona 85301

www.brewercoteaz.com Tel. 623-931-3728 Toll 888-931-3728 Fax 623-842-0714 sales@brewercoteaz.com

QUIKJOINT

Pavement Marker Adhesive

Pavement Marker Adhesive is a Hot Melt Adhesive for the Placement of Pavement Markers. This product may be used to bond Ceramic and Plastic Markers to Portland cement concrete, asphaltic concrete or Chip-sealed road surfaces. It acts as a media between the marker of passing traffic and the thermal shock of temperature changes. Damage to the pavement surface is virtually eliminated and life expectancy of the marker itself is extended. Composed of select asphaltic material blended with mineral filler.

Advantages

Permanent Bond • Can be used on Concrete or Asphalt • Long Lasting
No Mess • Economical • Easy to Install

Composition

Pavement Marker Adhesive consists of a bottom release paper line, a middle layer comprised of 93 mil thickness of non-shrinking rubberized asphaltic membrane and a top layer of a 3 mil clear plastic liner.

Weather Limitations

For best results, do not apply on rainy days or when the temperature is expected to drop below 50° F during the next 24 hrs. On hot days, the pavement shall be pre-dampened with fog system. New asphalt should not be sealed until after exposed to a full summer heat cycle. Ambient and surface temperature must be at least 55° F and rising during application. Do not apply if rain is in the forecast for the next 24 hrs.

Method of Application



Step 1 Contact Surface must be completely clean, dry and free of foreign and loose material. Pre heat the ground where the adhesive will be placed



Step 2 after removal of the white wax paper, press the exposed side onto the surface where the reflector is to be located



Step 3 Heat the top of the Pad using a standard torch until pad is liquified and the clear plastic is flashed off



Step 4 Immediately press devise on softened pad and allow cooling, to achieve maximum adhesion, requires only a few minutes

Distributor

THE PAVEMENT MAINTENANCE SPECIALISTS

5226 West Missouri Avenue Glendale Arizona 85301

www.brewercoteaz.com tel. 623-931-3728 toll 888-931-3728 fax 623-842-0714 sales@brewercoteaz.com

REV-TIP™ & REV-GUARD™

THE PRO'S CHOICE

INTERCHANGEABLE

Fits Graco RAC™ IV & V, some Titan, & Wagner guards.

POSI-LOC™ SYSTEM

Snap in centering of tip, no leaks, splashback or mess.

COMPACT SIZE

Use in tight areas - smallest size - No splatter.

EASIEST ASSEMBLY

Fewer parts - Less complicated takes only seconds!

SEAL LOCATING HANDLE

Tip handle simplifies installing & aligning the seal.

FINGER-TIGHT NUT

No tools required for assembly or adjustment.

SPRAY CLEAN REV-GUARD™

Patented airfoil shape for a clean, no drip, application

INDIVIDUALLY TESTED

Sized for highest quality and optimum performance.

STRINGER HOLE

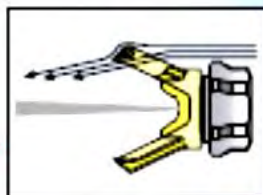
Hang tip for easy cleaning & storage

HIGHEST QUALITY CARBIDE

Superior, micro-ground finish for extra long life and consistent size & spray pattern

SINGLE-SEAL

Long life - no leaks - sprays all coatings.



REV-TIP™

REVERSIBLE AIRLESS SPRAY TIPS



- Longest Tip Life
- Consistent Pattern



Protected By U.S. Patent No. 5300984 Other U.S. & foreign patents applied 112



Spray & Striping Tip Selection Chart

TIP IDENTIFICATION:

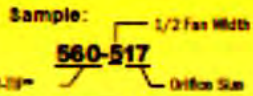
1st 3-digits identifies it for airless paint spraying (P.N. 560-xxx) or for airless line striping (P.N. 562-xxxST), or for fine finish spraying (P.N. 571-xxx).

4th digit is the fan width - the number is half the fan width, e.g., 5 means a 10" fan.

5th and 6th digits are for the orifice size and is measured in thousandths of an inch, e.g., 17 = 0.017 inch - The higher the number, the larger the tip.

REV-TIP™

Airless Paint Spraying
P.N. 560-xxxx
Includes REV-TIP, metal seal & O-ring seal.



REV-GUARD™

P.N. 561-001
11/16-16 "F" Thread. Fits: Airlessco, ASM, Wagner (some), and Campbell Hausfeld.

P.N. 561-002
7/8-14 "G" Thread. Fits: Greco, Wagner (some), Titan, Airlessco.

SEALS

P.N. 561-029
Metal Seal with O-Ring

P.N. 561-026
O-Ring Seal



	AIRLESSCO REV-TIP™	COMPETITOR A	COMPETITOR B	COMPETITOR C
Aerodynamic Non Drip Guard	●			
Finger Tight OK for Nut Requires Hand Tight Pressure	●	●	●	●
Snap Tight Tip Lock	●			
Low Profile Guard	●			
Seal Orientation Slot	●			
Tip Handle Hole for Spring	●			
No Seal Blow-By When Tip Is Not in Centered Position (1)	●			●
Seal Orientation Tool on Tip Handle	●			
Non Pin Diffuser (2)	●		●	●
Hardened Cylinder	●	●		
Long Life Metal Seal	●	●	●	●
Short Fluid Path (3)	●	●	●	●
Tip Fit Greco Series	●	●	●	●
Seal Installer on Tip	●	●	●	●
7/8 & 11/16 Gun Thread	●	●	●	●
Working Pressure Rating	5000 PSI	4050 PSI	5000 PSI	Working Pressure Unknown

(1) Uncontrolled Spray Back Toward User (2) No Pattern Distortion From Pin (3) No Softing

REV-TIP™ for Painting P.N. 560-xxx
REV-TIP™ for Striping P.N. 562-xxxST

For sizes not shown, call factory for availability.

REV-TIP™ for Painting Fan Width (12" from surface)	SPRAY PAINTING TIP - ORIFICE SIZE (Inches)																
	in.	(mm)	.009	.011	.013	.015	.017	.019	.021	.023	.025	.027	.029	.031	.035	.039	.041
4-6	102-152	209	211	213	215	217	219	221	223	225	227	229					
6-8	152-203	309	311	313	315	317	319	321	323	325	327			335			
8-10	203-254	409	411	413	415	417	419	421	423	425	427	431					
10-12	254-305		511	513	515	517	519	521	523	525	527	531	535				
12-14	305-356			613	615	617	619	621	623	625	627	631	635	639	641		
14-16	356-406				715	717		721							739	741	
16-18	406-457				815		819	821				831					
20-24	508-610				NEW Wide Tips ▶			W21	W23	W25							
Gun Filter	C= Coarse - 60 mesh F= Fine - 100 mesh		F	F	F,C	C	C	C	C	REMOVE FILTER							
Wood Interior	Lacquer, Varnish Stain, Sealer Enamel		●	●	●												
Wood Exterior	Exterior Stain Vinyl, Acrylic, Latex				●	●											
Masonry	Vinyl, Oil Base Alkyd Latex, Acrylic Block Filler Elastomer				●	●	●	●	●	●	●	●	●	●	●	●	●
Ceiling	Hi Build, Mill White							●	●								
Structural Steel	Heavy Coatings							●	●	●	●	●	●	●	●	●	●
Water Flow Rate	(gpm) (water @ 2000psi, 130 bar)	.12	.18	.24	.31	.38	.47	.57	.67	.77	1.03	1.31	1.63	1.80			
	(lpm)	.49	.69	.91	1.17	1.47	1.79	2.15	2.54	2.96	3.90	4.98	6.17	6.81			
Paint Flow Rate	(gpm) (latex paint @ 2000psi, 130 bar/1.35 spec. g)	.10	.15	.21	.27	.33	.40	.49	.58	.66	.88	1.12	1.39	1.54			
	(lpm)	.38	.57	.79	1.02	1.25	1.51	1.85	2.20	2.50	3.33	4.24	5.26	5.83			
Pump Minimum	(gpm)	.25	.25	.33	.40	.50	.60	.75	.88	1.0	1.25	1.5	2.0	2.2			
Output	(lpm)	1.0	1.0	1.25	1.5	1.9	2.3	2.8	3.3	3.8	4.7	5.7	7.5	8.2			
	*Pump will support tip worn to next larger size																

REV-TIP™ for Striping

P.N. 562-xxxST

Delivers consistent thickness
spray pattern with crisp, well-
defined edges. For striping
pavement and sports fields.

Includes REV-TIP™, Metal
Seal & O-Ring Seal.



REV-TIP™ for Striping STRIPING TIP ORIFICE SIZE INCHES

Fan Width (6" from surface)		.013	.015	.017	.019	.021
in	(mm)					
1-2	25-51	113ST	115ST	117ST		
2-4	51-102		215ST	217ST	219ST	221ST
4-6	102-152		315ST	317ST	319ST	321ST
6-8	152-203		415ST	417ST	419ST	421ST
Striping Paint		Oil Base	Oil Base	Latex	Latex	Latex

Patented by U.S. Patent No. 5,254,115. Other U.S. & Foreign Patents Applied For
IAC is a trademark of Greco, Inc. © Copyright 2002, Airlessco by Duralco Co.

NEW! Fine Finish REV-TIP™

Part # 571-xxx

NEW Double Orifice design for lower pressure airless
spraying when you need finer atomization for a smoother
finish on interior trim, cabinetry, shutters, and doors.

Fan Width		Orifice Size	
Inches	(mm)	.012	.014
4-6	102-152	212	214
6-8	152-203	312	314
8-10	203-254	412	414



Reversible REV-TIP™

Part # 560-xxx REV-TIP for Spray Painting
562-xxxST REV-TIP for Striping

POSI-LOC™ SYSTEM

Snap in centering of tip.
No leaks, splashback or mess.

SEAL LOCATING HANDLE

Tip handle simplifies installing & aligning the seal.

EASIEST ASSEMBLY

Fewer parts - Less complicated takes only seconds!

INTERCHANGEABLE

Can be used with most tip guards.

HIGHEST QUALITY CARBIDE

Micro-ground for extra long life, consistent tip size & pattern.

STRINGER HOLE

Hang tip from hole for cleaning

SINGLE-SEAL

Metal seal - no leaks - sprays all coatings.



Each tip individually tested!



Easy to install & align!

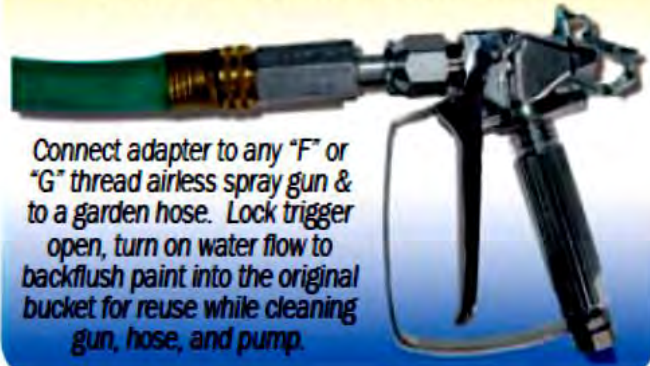
NEW!

Quick Flush

Cuts Cleaning Time & Saves Paint!

Part # 170-005

Simple to Use...Fast to Finish!



Connect adapter to any "F" or "G" thread airless spray gun & to a garden hose. Lock trigger open, turn on water flow to backflush paint into the original bucket for reuse while cleaning gun, hose, and pump.

Spray Gun & Hose Spray Packs



Part No: 002-013 Spray Pack includes:

120-504 ProLight Convertible 4/2-Finger Gun
100-011 50' x 1/4" Hi-Flex Airless Hose

Part No: 002-025 Spray Pack includes:

120-502 ProLight 502 Flat Handle Gun
100-011 50' x 1/4" HI-Flex Airless Hose

Part No: 002-015 Spray Pack includes:

120-554 008 Silver 4-Finger Gun
100-011 50' x 1/4" Hi-Flex Airless Hose

See Airlessco REV-TIP™ Brochure (Form 001-449) for current listings of available tip sizes including "W" wide and FINE FINISH tips for Spraying, & Striping tips.

Copyright © 2004 Airlessco by Overtech Co. All rights reserved. Product specifications subject to change without notice.

PRODUCT FEATURE	AIRLESSCO REV-TIP™	COMPETITOR A	COMPETITOR B	COMPETITOR C
Aerodynamic Non Drip Guard	●			
Finger Tight Nut	●			
Requires Hand Tight Nut		●	●	●
Snap Tight Tip Lock	●			
Low Profile Guard	●			
Seal Orientation Slot	●			
Tip Handle Hole for Stringer	●			
No Seal Blow-By When Tip is Not in Centered Position (1)	●			●
Seal Orientation Tool on Tip Handle	●			
Non Pin Diffuser (2)	●		●	●
Hardened Cylinder	●	●		
Long Life Metal Seal	●	●	●	
Short Fluid Path (3)	●	●	●	
Tips Fit Graco Bases	●	●	●	
Seal Installer on Tip	●	●	●	
7/8 & 11/16 Gun Thread	●		●	●
Working Pressure Rating	5000 PSI	4050 PSI	5000 PSI	Working Pressure Unknown

(1) Uncontrolled Spray Back Toward User

(2) No Pattern Distortion From Pin

(3) No Spitting

REV-GUARD™



■ Airfoil shape for a clean, no-drip application

■ Finger-tight nut, no tools required

■ More compact size to use in tight areas

Order #

561-002 REV-GUARD™ with 7/8-14 (G) Thread

561-001 REV-GUARD™ with 11/16-16 (F) Thread



Manufacturer of Reflective and Non-Reflective Pavement Markers

- Reflective Pavement Markers
- Reflective & Non-Reflective Ceramic Pavement Markers
- Non-Reflective Plastic Pavement Markers
- Temporary Chip Seal/Overlay Pavement Markers
- Solar Pavement Markers
- Marker Adhesive Material
- Glass Spheres



Type: 932
2-Y Two-Way Yellow



Type: 932
1-W One-Way White



Type: 932
2-Y Two-Way Yellow
Double Cover



Type: 932
1-W One-Way White
Double Cover

**Chip Seal / Overlay Temporary Markers
Model 932**

The polyurethane body of Apex Temporary Markers have great bending memory. The retroreflective tape is protected from oil and dirt by a clear plastic cover. Excellent for Chip Seal, Slurry Seal, or Temporary Delineation. Apex Chip Seal Markers have a minimum reflectance of 1800 Candle Power per foot-candle per Sq. Ft. and 0.10° observation and 0° entrance angle.

REFLECTIVE TAPE

Reflective tape shall be affixed along the top of the vertical section of the marker body on one or both sides. Reflective tape shall be .250" wide by 4.0" long metalized polycarbonate microprism retroreflective material with acrylic backing or equal, providing the following minimum optical performance with an observation angle of 0.2 deg, measured in candle power.

Entrance Angle	Specific Intensity
White 0°	3.5
White 30°	2.7
Amber 0°	3.0
Amber 30°	1.7

ADHESIVE

The factory applied adhesive to the marker base for bonding the marker on the pavement is a solid butyl rubber 1/8" thick, 3/4" wide on 1" wide release paper.

Markers available with no plastic cover, a single plastic cover with a single staple , or two plastic covers with three staples.

Distributor

Brewer Cote of Arizona "The Pavement Maintenance Specialists"
5226 W. Missouri Avenue, Glendale Arizona 85301

www.brewercoteaz.com Tel. 623-931-3728 Toll 888-931-3728 Fax 623-842-0714 sales@brewercoteaz.com



PREMIUM GLASS BEADS

REFRACTIVE INDEX

The Beads have a refractive index of 1.5 when tested by the oil immersion method

MOISTURE CONTENT

Does not exceed 0.01%

SPECIFIC GRAVITY

Beads shall have a specific gravity between 2.40 & 2.60 @ 25° C
Per ASTM D-153 Method A

CHEMICAL STABILITY

Refluxing of a 50g sample of beads in a Soxhlet extraction apparatus for 8 hrs. with distilled water shall not produce more than a very slight reduction in luster or reflecting power of the beads

FLOW

Beads shall be free flowing. A 23kg sample of beads, when emptied into service box screen Having sieve openings of 1.18mm (US Standard Sieve#16) shall pass completely through the Screen without shaking or any excessive hand manipulation.

GRADATION

Catrans Specifications for Type II (8010-004 Dated Dec.22, 2009)

Sieve Opening	US Standard Sieve	% by Weight Passing
600 um	#30	100
250 um	#60	40-70
180 um	#80	15-35
106 um	#140	0-0.5

AASHTO Designation M247-13

Sieve Opening	US Standard Sieve	% by Weight Passing
1180 um	#16	100
850 um	#20	95-100
600 um	#30	75-95
425 um	#40	-
300 um	#50	15-35
180 um	#80	-
150 um	#100	0-5

Distributor

Brewer Cote of Arizona The Pavement Maintenance Specialists

5226 W Missouri Avenue Glendale AZ 85301

www.brewercoteaz.com Tel. 623-931-3728 Toll 888-931-3728 Fax 623-842-0714 sales@brewercoteaz.com



Manufacturer of Reflective and Non-Reflective Pavement Markers

- Reflective Pavement Markers
- Reflective & Non-Reflective Ceramic Pavement Markers
- Non-Reflective Plastic Pavement Markers
- Temporary Chip Seal/Overlay Pavement Markers
- Solar Pavement Markers
- Marker Adhesive Material
- Glass Spheres



4" Round
Yellow / White



6" Round Channel
Yellow / White



8" Round Channel
Yellow / White



4" Oblong
White



6" Jiggle Bar
Yellow / White

Apex Non-Reflective Ceramic Marker

Ceramic non reflective pavement marker glazed finish protects against weathering especially during rain, excellent day time visibility, available in high visibility white or yellow. A texture bottom helps them in place with epoxy. Ceramic non-reflective pavement markers Type A and Type AY consist of a heat-fired vitreous, ceramic base and a heat-fired opaque, glazed surface to produce the properties required in STANDARD SPECIFICATION JULY 2003, DOT, State of California.

Distributor

Brewer Cote of Arizona "The Pavement Maintenance Specialists"

5226 W. Missouri Avenue, Glendale Arizona 85301

www.brewercoteaz.com Tel. 623-931-3728 Toll 888-931-3728 Fax 623-842-0714 sales@brewercoteaz.com



Manufacturer of Reflective and Non-Reflective Pavement Markers

- Reflective Pavement Markers
- Reflective & Non-Reflective Ceramic Pavement Markers
- Non-Reflective Plastic Pavement Markers
- Temporary Chip Seal/Overlay Pavement Markers
- Solar Pavement Markers
- Marker Adhesive Material
- Glass Spheres



NON-REFLECTIVE PLASTIC PAVEMENT MARKER

The 4" Non- Reflective Plastic Pavement Marker Conforms to the Following

Plastic Non-reflective pavement markers Types A & AY shall be, at the option of the Contractor, either Polypropylene or Acrylonitrile-Butadiene-Styrene (ABS) Plastic type.

Polypropylene non-reflective pavement markers shall consist of Polyester Resin Binder, inert organic filler material and colorant pigments and shall conform to The Provisions in California Standard Specifications 2010 Section 85-1.02B, "Non-reflective Pavement Markers."

ABS non-reflective pavement markers shall consist of ABS plastic conforming to the Requirements in ASTM Designation: D 4673, Designation ABS 1-2-2, and shall Conform to the provisions in California Standards Specifications 2010, Section 85-1.02B. The bottom of the ABS plastic pavement markers shall have areas of Integrally formed protrusions projecting from the surface to increase the Effective Bonding surface area & produce a structural bond with the pavement.

TEST	PROPERTIES	REQUIREMENTS
D	Luminance Factor, Type A White markers only, Glazed Surface	75 Min.
E	Yellowness index, Type A, White markers only, Glazed Surface	7 Max.
F	Color-yellow, Type AY, Yellow markers only, The chromaticity coordinates must be within a color box defined by California Test 669	Pass
G	Compressive Strength	1500 lb. Min.
I	Artificial weathering, 500 hrs. exposure, yellowness index	20 Max.

Distributor

Brewer Cote of Arizona "The Pavement Maintenance Specialists"
5226 W. Missouri Avenue, Glendale Arizona 85301

www.brewercoteaz.com Tel. 623-931-3728 Toll 888-931-3728 Fax 623-842-0714 sales@brewercoteaz.com



Manufacturer of Reflective and Non-Reflective Pavement Markers

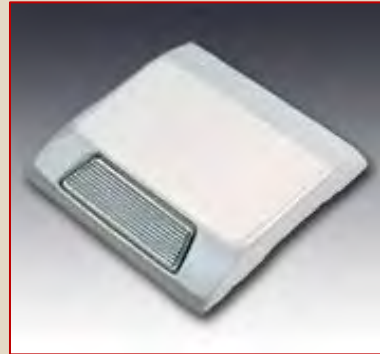
- Reflective Pavement Markers
- Reflective & Non-Reflective Ceramic Pavement Markers
- Non-Reflective Plastic Pavement Markers
- Temporary Chip Seal/Overlay Pavement Markers
- Solar Pavement Markers
- Marker Adhesive Material
- Glass Spheres



4" Round
Two-Way Yellow



4" Round
One-Way White



6" Jiggle Bar
One-Way White



6" or 8" Round
Two-Way Yellow



6" or 8" Round
One-Way White

Apex Retroreflective Ceramic Markers

The Apex Retroreflective Ceramic Markers combine the Power of Brilliant Night-time Visibility with Self-cleaning Glazed Surface for Exceptional Daylight Visibility.

Distributor

Brewer Cote of Arizona "The Pavement Maintenance Specialists"

5226 W. Missouri Avenue, Glendale Arizona 85301

www.brewercoteaz.com Tel. 623-931-3728 Toll 888-931-3728 Fax 623-842-0714 sales@brewercoteaz.com



Manufacturer of Reflective and Non-Reflective Pavement Markers

- Reflective Pavement Markers
- Reflective & Non-Reflective Ceramic Pavement Markers
- Non-Reflective Plastic Pavement Markers
- Temporary Chip Seal/Overlay Pavement Markers
- Solar Pavement Markers
- Marker Adhesive Material
- Glass Spheres



**Prismatic Retroreflective Pavement /Abrasion Resistant Marker
Model 921/921AR Glassed Faced**

The Apex Prismatic Marker is made of a durable ABS Plastic Shell filled with an Inert Thermosetting Compound. The shell contains 1 or 2 glass covered Prismatic Retroreflective Faces as required to reflect light from single or opposite direction.

Overall Dimensions 3.89" x 4.15" x 0.76"

Slope of Reflecting Face 32° to Base

Area of each Reflecting Face 3.25 Sq./in

Distributor

Brewer Cote of Arizona "The Pavement Maintenance Specialists"

www.brewercoteaz.com Tel. 623-931-3728 Toll 888-931-3728 Fax 623-842-0714 sales@brewercoteaz.com

CRACK-RITE™

CRACK-STIX®

CSX™ 1000 PRO-MELT TORCH



Tank Not
Included

40" x 5" x 20"

FOR USE
WITH

CRACK-STIX®

DIRECT HEAT "RUBBERIZED" CRACK & JOINT SEALANT

KEY PRODUCT FEATURES

Rugged Torch Design • Custom Soft Comfort Torch Grip • Trigger Start • Steel Construction w / Steel Guide Wheel • Machined Brass Fuel Valve for precision Gas Flow Control • Burns Propane or Mapp gas (Use w / 20 lb. or 30 lb. tank) • Walk Behind Application • 20 ft Hose and Regulator • Ergonomically Balances with Fuel Cylinder attached

Distributor

Brewer Cote of Arizona "The Pavement Maintenance Specialists"
5226 W Missouri Avenue, Glendale, Arizona 85301

www.brewercoteaz.com Tel.623-931-3728 Toll 888-931-3728 Fax 623-842-0714 sales@brewercoteaz.com



TITAN® SPEEDFLO®

POWERLINER™ SERIES

850



DirectLink™
Pressure Control

37.7cc 4-Stroke Engine

No Flat Tires
Specially formulated for a smooth Ride

Straight Lock or Free Wheel
Front Coaster

Folding Handle
Transport & Store Easily

Carries 5 Gal. Paint Pail
Not Included

Reversible Gun Mount
To Stripe off either Front or Rear Tire

LX-40 Spray Gun
Removable LX-40 Spray gun with in handle
filter and SC-6" reversible spraying tip

Recommended for Light Periodic-Duty on Small Parking Lots and Athletic Fields

The Powerliner 850 is Designed for entry level Contractors and Maintenance Personnel who need a Basic Line Striper capable of High-Spraying pressures for small jobs on pavement, grass or turf. DirectLink™ pressure control allows the user to Stencil and Paint with Airless Technology at pressures from 200 psi to 3000 psi.

PowerLiner 850 Specifications

Max Delivery	.33 gpm	Engine, Gas	37.7 cc
Max Operating Pressure	3000 psi	Weight (Empty)	70 lbs.
Max Tip Size (1 Gun)	0.021"	Part Number	029005

Distributor

Brewer Cote of Arizona "The Pavement Maintenance Specialists"

5226 West Missouri Avenue, Glendale Arizona 85301

www.brewercoteaz.com Tel 623-931-3728 Toll 888-931-3728 Fax 623-842-0714 Sales@brewercoteaz.com



TITAN®

Glass Bead Dispensers



Why Titan Glass Bead Dispensers?

Titan Tool incorporated glass bead dispensing systems are designed to deposit retro-reflective glass beads on traffic paint lines. These systems are complete with 50 lb. capacity hopper that accepts a full bag of beads, a single or dual dispenser with all hoses, fittings and hardware required for operation. The dispenser is mounted directly behind the spray gun.

These Systems are Gravity Flow Units. No Air or Auxiliary Power is required for Operation

When the gun is actuated, the bead dispenser door opens simultaneously with the gun. A shower of beads the width of the dispenser is then deposited onto the wet paint line. The amount of beads dispensed is easily adjustable using only a screw driver (6 lbs. of beads per gal. is a good rule of thumb). These dispensing systems are available in combination 4" and 6" widths as well as 12" widths. The various widths are interchangeable. Single Gun kits are standard with optional second gun kits available.

Kits come complete with hopper dispensers hoses and all mounting hardware required for operation (Tools not included)

Quick connect swivel fittings linkage provide ease of installation and removal when painting lines where beads are not needed

6" Bead Dispensers & Kits

Bead Dispenser Kit 6" Single 424-826
Bead Dispenser Kit 6" Dual 424-836
Second Gun Kit 6" 424-816
Bead Dispenser only 6" BD-600G

Pre-Drilled and Tapped holes in frame make mounting the bead hopper very easy. Durable powder coated hopper and mounting brackets

Flow of beads is controlled by adjusting the slide plate opening behind door. Dual plates allow selecting 4" or 6" widths

12" Bead Dispensers & Kits

Bead Dispenser Kit 12" Single 424-840
Second Gun Kit 12" 424-841
Bead Dispenser Only 12" BD-1200G

Distributor

Brewer Cote of Arizona "The Pavement Maintenance Specialists"

5226 West Missouri Avenue, Glendale Arizona 85301

www.brewercoteaz.com Tel 623-931-3728 Toll 888-931-3728 Fax 623-842-0714 sales@brewercoteaz.com



BAG STRAINERS

Remove dried flakes, lumps, filaments and other dust particles from all types of paints, stains and liquids.

5 gal.

Box 25 each

Distributor

Brewer Cote of Arizona

The Pavement Maintenance Specialists

5226 West Missouri Avenue Glendale Arizona 85301

www.brewercoteaz.com Tel 623-931-3728 Toll 888-931-3728 Fax 623-842-0714 sales@brewercoteaz.com