

Brewer Cote[®] *of Arizona*



STEEL - CRETE

MODIFIED CERAMIC CEMENT

Steel-Crete is a light weight high compression strength all-purpose repair compound with excellent bonding properties when applied correctly. Steel-Crete can be applied smooth or can be stiffened for texture and vertical applications. Steel-Crete dries to a firm and durable surface in many cases stronger than the original sub-straight.

Steel-Crete can be floated over badly damaged asphalt to greatly extend the life of the surface at a fraction of the cost of applying new asphalt. Can also be used to patch cracks and holes in stucco, poured concrete, masonry block, tile pavers, cinder block, mortar wash and many other substrates. Makes an excellent light weight low spot repair on flat roofs prior to applying roof coatings and is very water resistant.



APPLICATION:

Estimate pounds needed for project. Steel-Crete is a single component material requiring only the addition of water. Using a clean pail or mixing container blend 5 parts Steel-Crete with 1-part clean water adding the water to the container first. Mix at low to moderate speed until creamy and reasonable stiff as if it were whipped butter. Using a trowel, putty knife, or straight edge, float over the damaged surface of crack until depressions are filled completely. When repairing asphalt pavement several applications should be used to build surfaces up 1/4" to 3/8" inch. Remove any excess and clean up with water as soon as possible.

CHARACTERISTICS:

7 Day Cure 1420 PSI
14 Day Cure 2180 PSI
28 Day Cure 2280 PSI

PH 9.0

Particle size 300 microns

Steel-Crete does not contain calcium chloride

COVERAGE:

Spread rate: 120 to 150 sq. ft. per pail (30 lbs.) @ 3/16 of 1" thick.

4.5 sq. ft. per pound @ 3/16" thick.

1.7 sq. ft. per pound @ 1/2" thick.

DRYING TIME:

Surface dry's in 30 min. Avoid traffic for 3 hours, test for traffic-ability before opening. Dry time @ 70° F approximately 3 hours. Recoat in 24 hours where appropriate.

CURING:

Be careful not to allow wind or very hot concrete to draw excess water of the product or strengths can be compromised. Steel-Crete will be hard enough to walk on within 24 hours with strength maximizing in 30 to 60 days.

WEATHER CONDITIONS:

Closely examine surfaces to be repaired removing loose and deteriorated particles. Clean surfaces of bond inhibiting materials including but not limited to oil, dust, dirt, laitance and standing water for best adhesion. Do not proceed with application until unsatisfactory conditions are corrected. Steel-Crete should not be applied where surface temperatures are below 4°0F (5°C) when the possibility of temperatures falling below freezing. Cool temperatures and high humidity will retard the curing time. Take caution not to apply if weather conditions do not allow for a complete cure before rain, dew, or freezing temperatures.

COLOR:

Gray, Black pigmented.

CLEAN UP:

Water until dry, scrape tools after dry.

PACKING:

5 gal. Pails, (30 lbs)
Paper Bags, (40 lbs)

SAFETY:

Avoid breathing dust and getting in eyes. Where dust conditions exist that exceed nuisance dust levels set by OSHA use an approved dust mask and eye goggles. Continuous handling of Steel-Crete may result in dry skin, use a lanolin base hand cream to restore moisture where needed.

Brewer Cote of Arizona

The Pavement Maintenance Specialists

5226 West Missouri Avenue Glendale Arizona 85301

www.brewercoteaz.com Tel 623-931-3728 Toll 888-931-3728 Fax 623-842-0714 sale@brewercoteaz.com

MINERALS
RESEARCH, INC.



SHARPSHOT

12x30



Blasting Abrasive

Sharpshot® 30x60
is Ideal for lightly
Corroded Coatings
and New Steel



Artificial Turf Infill

Sharpshot® 30x60
Provides Ballast
and keeps Grass
Blades Erect



Road Projects

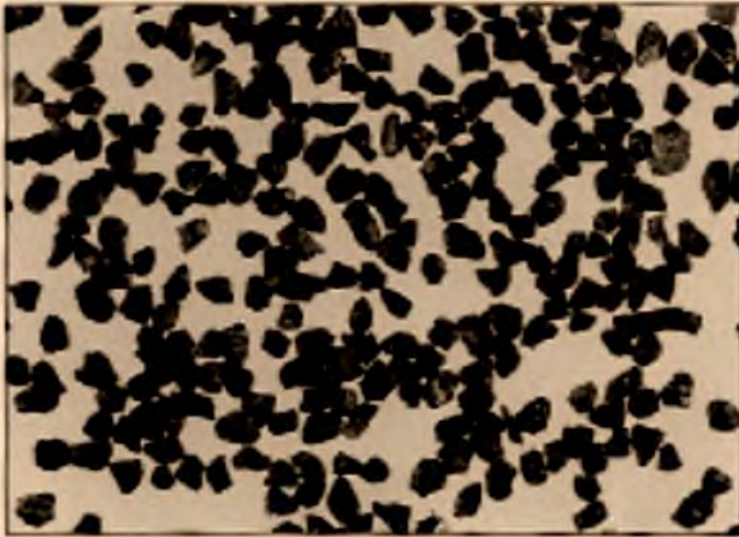
Sharpshot® 30x60
a more Durable
Non-Skid Product
due to its Hardness

Distributed By
BREWER COTE OF ARIZONA INC® THE PAVEMENT MAINTENANCE SPECIALISTS
5226 W. MISSOURI AVENUE, GLENDALE ARIZONA 85301
www.brewercoteaz.com • tel. 623-931-3728 • toll 888-931-3728 • fax 623-842-0714 • sales@brewercoteaz.com

SHARPSHOT® TECHNICAL DATA

Physical Properties

Mohs Hardness: >7
 Specific Gravity: 3.4 to 3.6
 Color: Dull Black
 Shape: Uniform and Angular
 Bulk Density: 100 to 120 lbs/cu.ft



Typical Chemical Analysis

Fe₂O₃ 45.4%
 SiO₂ 39.4%
 Al₂O₃ 7.3%
 CaO 6.6%
 MnO 0.1%
 MgO 1.7%
 Na₂O 0.2%
 K₂O 0.3%
 T₁O₂ 0.2%
 P₂O₅ 0.1%
 S 1.0%
 Crystalline Silica <0.5%

Aggregate Properties

Fractured Faces 100%
 LA Wear % 4% Loss
 Sand Equivalent 91%
 Uncompacted Voids 45.6%

12x30

20x50

30x60

40x120

U.S. STD. Sieve	Range % Retained	U.S. STD. Sieve	Range % Retained	U.S. STD. Sieve	Range % Retained	U.S. STD. Sieve	Range % Retained
8	0			20	0-10	40	0-15
12	4-20	20	40-80	30	10-50	50	20-50
16	30-60	30	10-40	40	20-60	60	5-30
20	10-40	40	5-20	50	5-25	70	5-30
30	5-20	50	0-15	60	0-20	80	0-20
40	0-9	60	0-10	70	0-10	120	0-20
		70	0-5	80	0-5		

Performance Data - Typical profile in Mils

12x30	4.0 – 5.0 mils	90-100 psi	18" to 24" to Surface	45° to 90° Angle
20x50	3.0 - 4.0 mils	90-100 psi	18" to 24" to Surface	45° to 90° Angle
30x60	2.0 - 3.0 mils	90-100 psi	18" to 24" to Surface	45° to 90° Angle
40x120	1.5 - 2.5 mils	90-100 psi	18" to 24" to Surface	45° to 90° Angle



3/8" BlakRok Aggregate

3/8" Black Aggregate coated with a Patented Polymer Coating, which contributes to Flowability and Ease of Installation. Up to 25 lbs of 3/8" BlakRok may be added to Enhance the Mechanical Properties, Increases the Load Bearing ability and Delivers more Product per Kit.

(Increases output from .4 c/f to >.6 c/f per 5g Kit)

Aggregate can be added directly into Pail, after Polymer and Sand Minimum spall depth of 1/2" is Required to utilize additional aggregate. A Motorized Pail Mixer is Recommended to Ensure a good Dispersion of Polymers and Aggregate.

PACKAGING

25 lb - 8"x 8"x 8" Boxes

Distributor

**BREWR COTE of Arizona The Pavement Maintenance Specialists
5226 West Missouri Avenue Glendale Arizona 85301**

www.brewercoteaz.com Tel 623-931-3728 Toll 888-931-3728 Fax 623-842-0714 sales@brewercoteaz.com

Roklin Concrete Slab Stabilization Technique

Roklin Systems Inc.'s method of restoring structure to compromised slabs uses a fraction of the time of conventional repairs at a fraction of the cost of full-depth replacement. With minimal or no prep required, using rapid-setting polymers and polymer-coated aggregate, slabs can be restored and returned to traffic in as little as one hour. The process, know as "Concrete Welding" can extend the life of the slab by as much as five years, subject to the existing conditions, the type of loads and ADT (Average Daily Traffic), as shown here on the Northbound Interstate 5 through Lebec California .



The area featured has sunk 2" to 3" below grade and has significant voids below the surface. Prep is a simple blast of compressed air to remove any loose debris and dirt at the surface.



The area, now clean and dry, is flooded with the Low-Viscosity Concrete Welder polymer which flows freely into the voids.



The rapid-setting polymer sets up quickly, allowing for a free flow into the void and then, when gelling, creates a back-fill point.



Once sealed and stabilized a 3/8" polymer-coated Basalt known as "Black Diamond" is placed into the depressed area to just below grade.



The area is leveled off with a simple 2x4 or straight edge and another pass of Concrete Welder is made to cement the Black Diamond into position.



A polymer-coated #3 rounded aggregate is then sprinkled into the base of Black Diamond which provides stability and a good mechanical interlock.



Another pass of Concrete Welder locks the #3 and 3/8" Black Diamond into position.

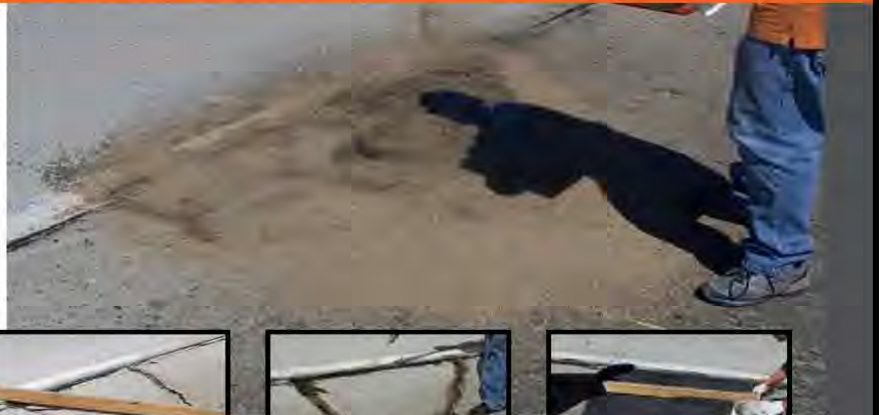


A final pass of #3 coated sand provides a high-traction surface ready for traffic in 10 minutes or less.



One month later the restored slab is still holding up well while the untreated slab continues to deteriorate.

CONCRETE WELDER



CONCRETE WELDER is a very thin, rapidly setting, amber-colored polymer for concrete-slab stabilization and thin concrete crack repair.

When combined with aggregates, Concrete Welder can restore structure where absent in 2nd and 3rd stage cracked slabs very cost effectively, and in a fraction of the time of normal demolition and removal of an existing broken slab. Concrete Welder is packaged in 21-oz. cartridges for hand application or a 10-gallon kit, 30-gallon kit, or 100-gallon kit for machine application.

CONCRETE WELDER 10-MINUTE REPAIR KIT provides a quick and simple repair product for concrete cracks and minor damage. The liquid penetrates into small cracks where water would go. It forms a high-strength bond that sets up quickly to form a waterproof seal, preventing further damage. In minutes cracks are repaired, preventing larger and more costly repairs in the future.

ROKLIN CONCRETE SLAB STABILIZATION TECHNIQUE

Roklin Systems Inc.'s method of restoring structure to compromised slabs uses a fraction of the time of conventional repairs at a fraction of the cost of full-depth replacement. With minimal or no prep required, using rapid-setting polymers and polymer-coated aggregate, slabs can be restored and returned to traffic in as little as one hour. The process, known as "Concrete Welding" can extend the life of the slab by as much as five years, subject to the existing conditions, the type of loads and ADT (Average Daily Traffic), as shown here on the Northbound Interstate 5 through Valencia, California.



Flip switch to the "start" position and turn speed dial to "10." Check the ratio on both "A" and "B" polymer by putting a small amount into a cup. Watch to make sure both sides flow evenly.



Allow cup to sit for approximately 3 minutes and ensure that material has hardened.



Clean the area, making sure there is no debris, moisture or dust. Sweep or use a small hand-blower. There is no need to remove broken concrete that is larger than 1/4 inch.



Stabilize rocking slab by injecting Concrete Welder into the joint until the slab is stabilized. (If not stabilized, the slab will be rocked by vehicles passing in adjacent lane.) Do not overfill.



Flood with Concrete Welder.



Cover with sand.

Distributor

Brewer Cote of Arizona "The Pavement Maintenance Specialists"

5226 West Missouri Avenue, Glendale Arizona 85301

www.brewercoteaz.com Tel. 623-931-3728 Toll 888-931-3728 Fax 623-842-0714 sales@brewercoteaz.com

ROKLIN

SYSTEMS INCORPORATED

EMERGENCY REPAIR BULLETIN

Before



After



Always be prepared with **Roklin Quick Repair Products** for Concrete & Asphalt.

With Roklin's **FloMix** and **FlexSet** you can easily return damaged areas to service in less than 30 minutes.

- Complete repair quickly & economically
- Prevent accidents and injuries
- Avoid lawsuits
- Minimal prep required
- Reduce closure time
- Prevent damage from spreading
- Create a long-lasting repair
- Waterproof the damaged area
- No need to wait for the hot asphalt truck
- No need for expensive/heavy equipment.

Have a few 5-gal. kits of FloMix or FlexSet on hand at all times, so you can respond quickly and ensure the safety of roads and highways, parking areas, driveways, runways, sidewalks, etc.





FlexSet™ Elastic Concrete

Roklin Systems® FlexSet combines polymers with a specially-treated aggregate to create a rapid setting, easy-to-apply, long-lasting and durable concrete repair. Repairs can be done in minutes, using only 4 simple steps. Originally, developed for the U.S. Air Force as a rapid runway repair material, FlexSet has become an inexpensive alternative to traditional concrete restoration procedures. This innovative, patent pending process provides a modern solution to an age-old problem. FlexSet repairs are guaranteed to perform. FlexSet cures to a flexible composition that supports heavy loading yet can tolerate shock, vibration and thermal movement to withstand heavy truck volume as encountered on Interstate Highways and Bridges

Distributor

BREWER COTE OF ARIZONA INC® 'THE PAVEMENT MAINTENANCE SPECIALISTS'
5226 W. MISSOURI AVENUE, GLENDALE, ARIZONA 85301

FlexSet™ Elastic Concrete

FlexSet Elastic Concrete is a flexible concrete comprised of elastic cement and coated silica quartz mix.

FlexSet Elastic Concrete is supplied in 5 gal pails comprised of: 43 lbs. Polymer Coated Silica Quartz, 1/2 gal of Elastic Cement A, 1/2 gal of Elastic Cement B, and 10 lbs. of Polyme Coated Topping Sand.

Packaging & Coverage: Each 5 gal container of FlexSet Elastic Cement will fill .4 cubic feet (691 cubic inches).

125 lbs of Elastic Concrete will fill one cubic foot. The coverage rate is:

Thickness	Coverage / Sq. Ft	Thickness	Coverage / Sq. Ft
1/8"	38.4	5/8"	7.7
1/4"	19.2	3/4"	6.4
3/8"	12.8	7/8"	5.5
1/2"	9.6	1"	4.8

Safety: FlexSet Elastic Concrete is not a significant skin or eye irritant Nevertheless, Skin or eye contact may lead to sensitization. Appropriate protection is necessary. Gloves and safety glasses are required for handling FlexSet. Wash hands before eating, drinking, and smoking after handling material.

Surface Preparation: Remove loose & unsound material. Sand Blast or shot blast contaminated

surfaces. Clean & blow out cracks with dry compressed air. Dry wet surfaces. Moist surfaces create a weak bond and foaming.

Caution: Use opened containers right away to avoid moisture contamination.

Mixing: Add 1/2 gal of "A" to coated sand mix. Mix thoroughly with heavy duty mixer (about 2 minutes). Next, add 1/2 gal of "B" and mix thoroughly (1 min). Blend is pourable, working time is approximately 15 min at 75°.

Installation : Squeegee, spread, gauge-rake or trowel. Broadcast surface with topping sand. For deep repairs, FlexSet can be placed in lifts topping each lift with aggregate. Install at temperatures between - 25° C to 40° C (- 14° F to 104° F).

Cure: Cure for 1 hour minimum at 75° F before subjecting to traffic. Cold temperatures slow cure. At 55° F, 4 hr. cure is needed for open traffic. Cold weather cure is accelerated by maintaining repair kits warm prior to application.

Shelf Life: FlexSet Elastic Concrete shelf life is 1 year when stored indoors, unopened under cool & dry conditions. Avoid wet storage conditions. Dispose empty containers i accordance with all local , state, and federal regulations.

First Aid: If Inhaled, remove to fresh air, if not breathing, give artificial respiration, preferably mouth to mouth. If breathing is difficult give oxygen and call physician. **Skin Contact:** Wash skin with soap and water. Remove contaminated clothing. **Eye Contact:** Flush with water for atleast 15 min and call physician.

Spill or Leakage: In case of a liquid spill of unmixed materials A & B absorb spilled material with sawdust or other absorbent Sweep into container and neutralize with decontamination solution (95% water, 5% ammonia & 2% detergent). Store open containers outdoors for at least 24 hrs. Dispose of neutralized waste in accordance with local, state and federal . government environmental regulations

Table 1 TX DMS – 6170 Type I Physical Requirements

TEST	AGE	METHOD	REQUIREMENT	RESULTS
Gel Time, min		TEX 614 J	5 to 60 min	9 min
Wet Bond Strength psi	7 days	TEX 618 J	≥100 psi	176 psi
Compressive Strength psi	24 hr	ASTM C579 B	≥200 psi	1710 psi
Compressive Strength psi	7 days	ASTM C579 B		1820 psi
Compressive Strength psi	28 days	ASTM C579 B		2140 psi
Compressive Stress @.1 in	7 days	TEX 618 J	≥200 psi	733 psi
Resilience %	7 days	TEX 618 J	≥90 %	97.2 %*
Resilience %	7 days	TEX 618 J	≥90 %	82.0 %
Thermal Compatibility	7 days	ASTM C884	No delamination or cracking after 9 cycles	pass

*From an Earlier Batch

Physical / Chemical Characteristics

Boiling Point	428° F, 536° F
Melting Point	N/A
Vapor Pressure (mm Hg.)	N/E
Vapor Density (AIR=1)	9.9
Specific Gravity (H2O=1)	1.084, 0.942-.948
Evaporation Rate (Butyl Acetate=1)	N/E
Solubility in Water	Insoluble, reacts with water to form carbon dioxide gas
Appearance / Odor	Pale Amber, Odorless Liquid
Reactivity	Stable, under normal, recommended storage conditions
Conditions to Avoid	Open Flame and Storage Temperatures above 120° F



PolyFlex DS – Gray

PolyFlex DS – Gray Re-Bonds cracked concrete. This thin, penetrating polymer is applied With Roklin Concrete Welder Polymer Low Pressure Dispensing System. PolyFlex DS restores Concrete strength by penetrating and re-bonding cracks. Large cracks are sand filled then Saturated with PolyFlex DS to form a High Strength Polymer Concrete.

PolyFlex DS Gray restores concrete strength for Roads, Bridges, Slabs, Parking Structures, Roofs and floors. It seals concrete to stop freeze, thaw, spalling and chemical attack. PolyFlex DS repairs fast. Traffic can resume within 20 min.

Penetrates / Re-Bonds

Penetrates and Re-Bonds thin, wide or deep cracks to restore Asphalt Strength

Seals / Protects

Waterproofs, protects from freeze, thaw or spalling.

Smooths rough surfaces. Restores traction surfaces

Fast Repairs / Cures

Solidifies in less than 5 minutes. Ready for traffic in 20 minutes

Repairs Year Round

Successful Repairs in Cold or Hot Weather

Safe to Use / Low Odor

Non-Flammable, there are no peroxides or heavy metals.

There is little odor on application and is safe to use.

(See product safety data for more information)

Chemically Resistant

Resists dilute acids and alkalis. Unaffected by salt, gasoline, diesel fuel, lubricating oils, or anti-freeze.

Fuel and Oil drips from vehicles will not penetrate treated areas.

INSTRUCTIONS

Roklin PolyFlex DS Gray performs well in Temperature Extremes. For best performance, Install at 10°F to 100° F ambient temperature and 50°F to 75° F material temperature. Do Not apply during rain or on wet surfaces. Read Material Safety Data and Installation Instructions before using product.

BULK APPLICATION EQUIPMENT

Roklin Vari-Flo Polymer dispensing equipment transfers, meters, mixes and applies Roklin PolyFlex DS. Co-reactive “A” and “B” components are transferred from 5 to 50 gal containers Through proportioning pumps (1:1 ratio), to the dispensing gun. Mixed material is dispensed Into repairs.

SMALL JOBS

Apply from 21 oz or 53 oz cartridge kits with hand operated air powered dispensing guns.

PACKAGING

Roklin PolyFlex DS equal volumes of “A” and “B” components are packaged in kits of 5 gal, 30 gal and 100 gal. Shelf Life is 12 mo. In unopened containers stored indoors.



Large Crack repair

Remove loose and unsound material
 Blow crack clean with dry compressed air
 Fill crack with 30 mesh or larger sand
 Flood crack with Roklin PolyFlex DS

Hairline Crack Repair

Blow out cracks with dry compressed air
 Flood with Roklin PolyFlex DS. Broadcast
 clean, dry uniform graded sand on cured
 liquid for high traction surface

Spider Cracks

Shot blast or sand blast deck surface
 Flood deck with PolyFlex DS at the rate
 of 1 gal per 100 sq. ft. Immediately
 broadcast sand to refusal into the cured
 liquid. When cured sweep off excess sand.

Restoring Traffic

With Roklin PolyFlex DS, traffic can resume
 within 20 minutes of completion of work
 reducing the time of crews' exposure
 to on-coming traffic

Typical Properties: Application

Component	"A"	"B"
Ratio A:B Volume	1	1
Viscosity @ 73°F cps	24	57.5
Appearance	Amber	Gray
Specific gravity @ 73°F	1.09	1.01
Flash Point °F	245	360

Mixed

Pot Life, Minutes @ 73°F	3
Cure Time Minutes @ 73°F	10
Cured Color	Gray

Typical Cured Properties

Specific Gravity	ASTM D792	1.07
Hardness, Durometer D	ASTM D2240	70
Tensile Strength, psi	ASTM D412	4300
Elongation at Break %	ASTM D412	≤10
Tear Strength	ASTM D624	275
Compression Strength psi	ASTM C39	4250
Bond Strength psi		500

Distributor

Brewer Cote of Arizona, Inc "The Pavement Maintenance Specialists"

5226 W Missouri Avenue, Glendale, AZ 85301

143

www.brewercoteaz.com Tel. 623-931-3728 Toll 888-931-3728 Fax 623-842-0714 sales@brewercoteaz.com



POLYFLEX

PCCP Patching – Permanent Repair Products

ADOT Approval Section # J-2C-16048



BEFORE



DURING



AFTER

These pictures are of Projects that were done on I-17, Loop 202 and Loop 101 and now the Broadway Curve up-grades. Brewer Cote is Pleased to be involved with these ADOT Projects

- Two-Component Urethane Rapid Setting Patch Material
- Hand Mix or Bulk Applicator supplied by Brewer Cote at “No additional charge”
- Available in Black / Gray
- Open to Traffic in 20 Minutes

Samples and Demonstrations Gladly Provided



BREWER COTE OF ARIZONA INC ® THE PAVEMENT MAINTENANCE SPECIALISTS
5226 W. MISSOURI AVENUE, GLENDALE, ARIZONA 85301

POLYFLEX

City of Phoenix' Sky Harbor Airport ...

Williams Gateway, Deer Valley and Goodyear Airports Have been using **FlexSet** and **PolyFlex** for more than 10 Years! Pima County, Oro Valley and various others use **PolyFlex Black** for their Asphalt repairs.

PolyFlex re-bonds cracked Concrete, it is used to strengthen Roads, Bridges, Slabs and Parking Structures. It seals Concrete to stop freeze, thaw, spawling and chemical attack



Packaging - **PolyFlex** equal volume 'A' & 'B' components are packaged in 5 gal pail kits or bulk 30 gal or 100 gal kits. Shelf life is 12 mo. in unopened containers stored indoors. Brewer Cote keeps both the 5 gal and the bulk kits in stock. (Including the application equipment)

Instructions - **PolyFlex** performs well in extreme temperatures. In excessive heat (100° F or higher). Do not leave product outside overnight. Do not apply during rain or on wet surfaces. Co-reactive A & B components are transferred from 5 to 50 gal containers, through proportioning pumps (1:1 ratio) to dispensing gun. Mixed material is dispensed into repairs. Read safety data sheet & installation instructions before using product.

Typical Properties

Component	'A'	'B'
Ratio A : B	1	1
Viscosity 73° F cps	24	57.5
Appearance	Amber	Black/Gray
Flash Point in F	245	360
Specific Gravity @ 73° F	1.09	1.01

Application Tests

Resilience
5 hr. Compressive Strength
24 hr. Compressive Strength
7 Day Tensile
7 Day Tear
Pot Life

Procedure

ASTM C579-01
ASTM C579-01 Mod
ASTM C579-01 Mod
ASTM D638
ASTM D624
Gardeo GT-S Gel polymers

Results

Pass
2100 psi
3800 psi
500+ psi
200 lb f/n
5 min

Temperature

80° - 100°
60° - 80°

Set Time

5-6 min.
10 min.

Return to Service

20 min.
30 min.

VARI-FLO POLYMER DISPENSING MACHINE

Roklin's VariFlo machine provides a quick and easy-to-use method for concrete and asphalt repair. There is minimal training required to use the VariFlo machine. The process begins with attaching the hoses, and flushing the lines to check that both flow evenly. When this is complete you are ready to apply your product.

Many Options

The VariFlo machine can be used to repair all types of pavement. While designed for two-part polymers, the VariFlo machine can be used with any 1-to-1 ratio two-part product. VariFlo is available in different sizes and can accommodate different size drums ranging from 5 to 50 gallons.

The two machines that accommodate these various sizes of drums are highly portable. Both machines fit easily into the back of a small truck. The smaller machine can even be hand-lifted. The machine has a low-power consumption and can be run off a small generator or an inverter, needing only 24 volts.



Control and Speed

The VariFlo machine has a variable volume delivery so material can be placed as quickly or as slowly as is needed. The mixing tips are simple to swap and allow for placement in small cracks or flowed across widespread damage. VariFlo applications allow significantly faster placement of materials. It is less labor intensive. The low viscosity material applied with VariFlo allows for easy, controllable flow into cracks or damage of any size, eliminating the need for removal or widening of cracks. VariFlo allows for slab stabilization with no removal, saving time, money and eliminating the need for damaged pavement disposal.

Easy Maintenance and Upkeep

VariFlo is designed with open access to easily-changeable parts. Replacement parts are readily available and easy to install. When done using the machine, flush with Vegetable oil, dispose of mixing tip and store.

Affordable

The VariFlo machine is an inexpensive option to effectively handle pavement repairs. Not only is it more affordable than other machines that perform similar functions, VariFlo is the more affordable polymer repair method. Using the VariFlo machine offers a 20-25% savings over our bucket repair method.



Safe

Enclosed delivery ensures no leaks or spills. Users are not exposed to materials as the drums are connected directly to the hoses and swapped out when they are empty. Workers are on the road for a shorter time so they have much less exposure to traffic.

Overall benefits to using VariFlo:

- Cleaner and faster
- Easier preparation
- Simple training
- Easy process and maintenance
- Safer

VARI-FLO PDM INSTRUCTIONS

START UP

*** Do Not plug machine into outlet and operate without fluid materials attached to pumping unit. Never operate pumps dry. This can cause severe damage to the pumps.**



Check that all fluid and air hose fittings are securely attached. Make sure there are no kinks in the hoses.



Do not over-tighten JIC hose swivel fittings. It is not necessary to apply thread tape to JIC fittings



Attach drum hose and clamp to A and B containers, remove any air bubbles by loosening the clamps at the pump inlet and bending the clear tubing.



Speed dial on remote should be set at "0". Plug in the main power source. Have a bucket ready for the discharging material.



Turn to on and slowly adjust speed dial to 25 to allow pumps to be primed and fill the hoses. After a few seconds, the speed dial may be increased. Check for consistent flow.



Close gun valves back into closed position. Ensure that both drums have equal amounts.



Attach a static mixer to the gun end and secure with the mixer retaining nut and hand tighten.



Open gun valve handle. Turn the machine back on, increase speed dial to desired flow rate.

OPERATING TIPS

Always vent the drums prior to application. If not vented they will collapse. Always store material closed tightly to prevent moisture contamination.

Before going out to the job site prepare and run the unit with material to ensure proper operation.

Always use a new static mixer when restarting after any break or interruption.

When applying the material be sure to close the gun valves before you air purge the mixer. Regularly purge the mixer when shutting off for more than a minute.

Do not use wet sand or aggregates.

With temperature increases, the material set time will increase. Colder temperatures will reduce it as well. Sand temperature and surface temperature can also be a factor.

Always be sure gun valves are closed first to clean and remove the gun manifold at the end of the day.

Always store the unit indoors at temperatures above 50°F. For more than a week, flush A-side hose with hydraulic oil. Before restarting, flush A-side hose for 2 minutes at a speed of 30.

Replacement parts for the pumps are available. Any work done by unauthorized personnel will negate any warranties.

Distributor

Brewer Cote of Arizona "The Pavement Maintenance Specialists"

5226 West Missouri Avenue, Glendale Arizona 85301

www.brewercoteaz.com Tel 623-931-3728 Toll 888-931-3728 Fax 623-842-0714 sales@brewercoteaz.com