

# QuikSeam

The most effective way of protecting pavement joints against water infiltration

## Peel & Stick

- Water Proof
- Full Depth Seal
- Increases Density
- All In One Joint Sealer
- Utility Cuts
- Highways
- Airports
- New Construction
- Overlays



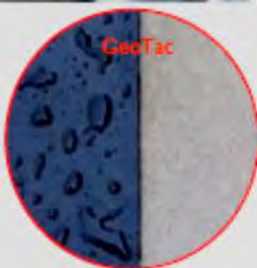
## Seam and Water Infiltration Sealants

*Peel and Stick on Vertical and Horizontal Pavement Surfaces*

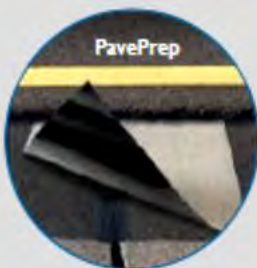
Full Depth Patch



Completely seals edges and finish surface on longitudinal joints



Reflective Crack Control For Longer Lasting Asphalt Overlays



Installs by removing release liner, self-adhering to vertical pavement edge or surface cracks and joints prior to placement of hot mix

Product #	Description	Application
QJP95000	9 inch wide x 50 feet long QuikSeam, 37.5 sq.ft.	Vertical Joint
PPSA33263	12 inch wide x 50 feet long PavePrep, 50 sq.ft.	Underlayment
PPSA33265	18 inch wide x 50 feet long PavePrep, 75 sq.ft.	Underlayment
PPSA33270	24 inch wide x 50 feet long PavePrep, 100 sq.ft.	Underlayment
GT33215	18 inch wide x 50 feet long GeoTac, 75 sq.ft.	Waterproof Membrane



# QuikHold

Bituminous Pads for Traffic Control Devices, Reflectors, Speed Bumps and Temporary Signage

## Peel & Stick Pads

Adhesive Rubberized Asphalt  
Apply Heat  
No Mess  
Easy to Install  
Concrete or Blacktop



Anchor bituminous pads when concrete deck cannot be drilled

Install by peeling and sticking pads on pavement where traffic control sign, speed bump, or reflector is to be located; heat and bond.

Product #	Description	Qty
QH4000	QuikHold Pads 4 in. x 4 in. squares	100
QH9000	QuikHold Pads 8 in. x 8 in. squares	25
QH1200	QuikHold Pads 12 in. x 12 in. squares	25

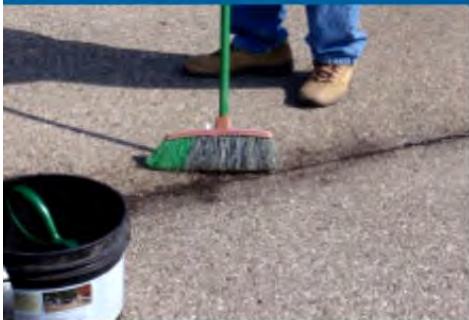


# QuikFill

Repair Cracks, Fatigued Surfaces, Low Spots and Pot Holes in pavement

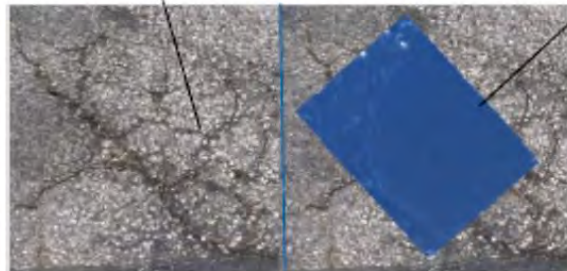
## Coated Granules

Alligator Areas  
Fatigued Surfaces  
Cracks & Joints  
Depressions  
Pot Holes



Fill cracks and distressed pavement work area

Install QuikFill and over seal with QuikSeam.



Fill and brush material into cracks, fatigued, alligator and low spots; heat then over seal with Quikjoint or QuikSeam.

Product #	Description	Qty
QS9010	QuikSeam Roll 9 inch wide x 10 feet long (7.50 sq.ft.)	2
QF6500	QuikFill 6 gallon plastic pail 50 lb filler	1



Distributed By

**BREWER COTE OF ARIZONA INC® THE PAVEMENT MAINTENANCE SPECIALISTS**  
5226 W. MISSOURI AVENUE, GLENDALE ARIZONA 85301

www.brewercoteaz.com • tel. 623-931-3728 • toll 888-931-3728 • fax 623-842-0714 • sales@brewercoteaz.com

## ROKLIN STEP-BY-STEP ASPHALT REPAIR

Roklin Systems Inc. introduces FloMix, the rapid asphalt repair. With no saw-cut or demolition required, prep is quick and easy, usually just blown air. Damaged areas can be returned to traffic in a fraction of the time required for traditional repair methods. The polymer-based repair works in areas where there is a lot of movement, damaged base, where heavy rolling equipment is not available or where other asphalt repair materials have failed.



To begin, use a wire brush and compressor to sweep and blow the dirt out of the hole.



Put on Nitrile gloves and safety goggles. Also, make sure you have on long sleeves and pants to protect from any possible splatter.



Pour the bottle marked "A" into the bucket. Pour slowly so as not to splash.



Mix the FloMix in bucket with egg-beater style mixer or pail mixer.



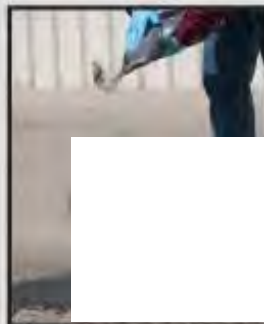
Shake "B" bottle for 30 seconds. Pour into bucket. Mix for 2 minutes.



Flow material into damaged area to just-blow grade.



Use a screed to spread the material evenly.



Broadcast topping sand over entire surface until you cannot see liquid.



When set, sweep or blow away excess sand and your repair is ready for traffic.

**ROKLIN**  
SYSTEMS INCORPORATED

Distributor  
Brewer Cote of Arizona  
The Pavement Maintenance Specialists  
5226 West Missouri Avenue, Glendale, Arizona 85301  
Tel. 623-931-3728 Toll 888-931-3728 Fax 623-842-0714  
www.brewercoteaz.com sales@brewercoteaz.com



Distribute your asphalt crack filler material with our 2 gal Pour Pot made of 18-gauge steel. Release material with the fingertip control valve 7 1/2" diameter X 26" tall.



Combined with your air compressor and propane source, the P.A.T. (propane, air, torch) torch will create a high heat output along with a high-speed blast of air to clean and dry cracks in the work area. Made of 3/8" and 1/2" aluminum pipe. comes complete w/ torch, 50' hose, regulator, and striker

**Distributor**

**Brewer Cote of Arizona "The Pavement Maintenance Specialists"**

**5226 W Missouri Avenue, Glendale, Arizona 85301**

**www.brewercoteaz.com Tel.623-931-3728 Toll 888-931-3728 Fax 623-842-0714 sales@brewercoteaz.com**



## **Pour Pot**

The **MARSHALLTOWN** Pour Pots are used to apply cold crack sealant to Asphalt or Concrete. Made of 14 gauge Steel in the USA, these Pour Pots are a durable option. You have your choice of three different 2.6-gallon designs:

Pour Pot w/ Legs

Pour Pot w/ Wheels

Pour Pot w/ Long Handle.

All three have fingertip nozzle control, and the nozzle adjusts from  $\frac{3}{8}$ " to  $\frac{1}{2}$ ".

Distributor

Brewer Cote of Arizona "The Pavement Maintenance Specialists"

5226 West Missouri Avenue, Glendale Arizona 85301

[www.brewercoteaz.com](http://www.brewercoteaz.com) Tel 623-931-3728 Toll 888-931-3728 Fax 623-842-0714 [sales@brewercoteaz.com](mailto:sales@brewercoteaz.com)



## Asphalt Banding Machine

The **MARSHALLTOWN** Asphalt Banding Machine dispenses a uniform 3" banded finish up to 1/8" thick over cracks. Pull your Asphalt Banding Machine backward and use the guide to fill cracks with ease. It's made of 14 gauge steel and has a reversible wear shoe, extending its life by at least three times before having to replace. You can use hot or cold crack sealants in the 4-gallon hopper. It comes fitted with 6" diameter steel disk wheels.

Uniform 3" banded finish up to 1/8" thick  
Reversible wear shoe for 3x the life  
4 gallon hopper  
Use with hot or cold sealants

### Replacement Bander Wear Plate

The **MARSHALLTOWN** Replacement Bander Wear Plate fits our Asphalt Banding Machine. Extend the life of your Banding Machine. It's quick and easy to replace.



- Fits the **MARSHALLTOWN** Asphalt Banding Machine
- Dispenses a uniform 3" banded finish
- Quick and easy to replace

Distributor

Brewer Cote of Arizona "The Pavement Maintenance Specialists"  
5226 West Missouri Avenue, Glendale Arizona 85301

www.brewercoteaz.com Tel 623-931-3728 Toll 888-931-3728 Fax 623-842-0714 sales@brewercoteaz.com



## PERMANENT PAVEMENT REPAIR MATERIAL UPM® Unique Patching Material

UPM® Permanent Pavement Repair Material is a High-Performance cold patch asphalt mix that can Be used by Municipalities, Contractors business and Home owners to repair Roadways, Parking Lots, Jogging Bicycle and Walking paths, Driveways and other Asphalt and Concrete pavements.

### Benefits / Features

Year-round use • Ready to use – No primer or tacking materials are required prior to patching • Permanent repairs- UPM® mix repairs have been proven\* to out-last the surrounding pavement (\*Strategic highway research program (SHRP-H 106 Report plus other independent studies.) • All Weather Application – Permanent repairs under wet or dry conditions. • Seasonal grades – Specific formulations to accommodate year-round patching requirements. • Easy to use – Pour or shovel UPM® mix into the pothole using the 3 – step method.

### Distributor



BREWER COTE OF ARIZONA INC® 'THE PAVEMENT MAINTENANCE SPECIALISTS'  
5226 W. MISSOURI AVENUE, GLENDALE, ARIZONA 85301



# PERMANENT PAVEMENT REPAIR MATERIAL UPM® Unique Patching Material

## Limitations

Not intended for applications on unsound pavements. For overlay applications at least one test section should be prepared to evaluate the suitability of the materials and procedures. Do not Sealcoat over new patches for at least 30 days to allow for proper curing.

## Surface preparation

The area to be prepared should be cleaned and swept to remove loose fragments and debris from the area providing a solid base and clean edges.

## For Best Results

Use the appropriate grade of UPM® mix for the ambient temperature at the time the mix is being applied. Compact the mix before opening to traffic.

## Placement

Shovel or pour UPM® mix into hole and level out 25% higher than desired depth to allow for compaction. Compact UPM® mix with hand tamper, roller or plate compactor. For deep Potholes apply and compact UPM® mix in separate 2" layers.

## Coverage

10 lbs. of UPM® mix covers 1 sq. ft, 1" deep. Coverage rate @ 2" Deep

Unit	Square Feet
1 Ton	100
660 lb. Drum	33
60 lb. Pail	3
50 lb. Bag	2.5
24 lb. Pail	1.2

### UPM® Mix Seasonal Grade

Winter  
Spring/ Fall  
Summer  
Extreme Summer

### To be applied when outdoor temperature is

40° F and Below / 4° C and Below  
40° F To 60° F / 4° to 16° C  
60° F to 80° F / 16° to 27° C  
80° F and Above / 27° C and Above

## Shelf Life

Two years if stored in an unopened pail or drum. 18 mos. In unopened Bag. Bulk tonnage varies.





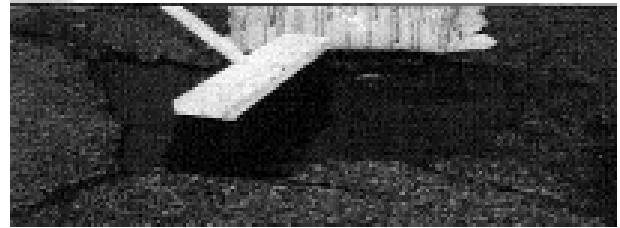
# PERMANENT PAVEMENT REPAIR MATERIAL UPM® Unique Patching Material

## BETTER MATERIAL = BETTER RESULTS

### Instructions

#### Step #1

Using a Broom or Leaf Blower, Clean Out large chunks and loose debris from hole. UPM® works best if the material is applied to a solid surrounding pavement and good base.



#### Step #2

Apply keeping Material contained in the hole. If the hole is deeper than 3" install & compaction lifts. Material should be 25% higher than surface before compaction.



#### Step #3

Compact with Hand Tamper, Truck or Car Tires, Plate Compactors or Rollers. After compaction, dust surface with sand or cement powder to "Set" UPM® quicker. This reduces tackiness for immediate pedestrian traffic.



### Questions and Answers

#### Why is UPM® Better?

UPM® is State approved & used by State DOT's all across the U.S. All raw materials are tested by Our State-of-the-Art-Laboratory to ensure Quality & Guaranteed Performance

#### Can UPM® be used for Concrete repairs?

Yes, UPM® is ideal for Concrete pavements, including Roadways, Driveways, Bridge Decks and Parking Lots.

#### What is the Coverage Rate?

Approximately 10 lbs. of UPM® will cover 1 Sq./ Ft - 1" Deep

#### Are there Seasonal Grades of UPM®?

Yes! UPM® is Available in Winter, Spring fall, and Summer Formulas. These are designed for the Optimal Performance during the various temperatures of application

#### Can UPM® be used in Wet Holes?

Wet or Dry, UPM® is designed to perform in any weather, any temperature

#### What is the Shelf Life of the Bags?

1 Year

#### How does UPM® "Set Up" ?

Upon Compaction, the aggregate and asphalt interlock making the patch stable and ready for immediate traffic. Road dust and dirt will crust the top of the patch. The patch will slowly cure below the crust remaining flexible during expansion and contraction.

#### Is A Primer or Tack Coat needed before applying UPM®?

No! UPM® is self-priming. The Proprietary liquid Asphalt gives tenacious binding properties to the hole

#### Distributor

**BREWER COTE OF ARIZONA THE PAVEMENT MAINTENANCE SPECIALISTS'**

**5226 W. Missouri Avenue Glendale Arizona 85301**

**WWW.BREWERCOTEAZ.COM TEL. 623-931-3728 TOLL 888-931-3728 FAX 623-842-0714 SALES@BREWERCOTEAZ.COM**

# NOMAD

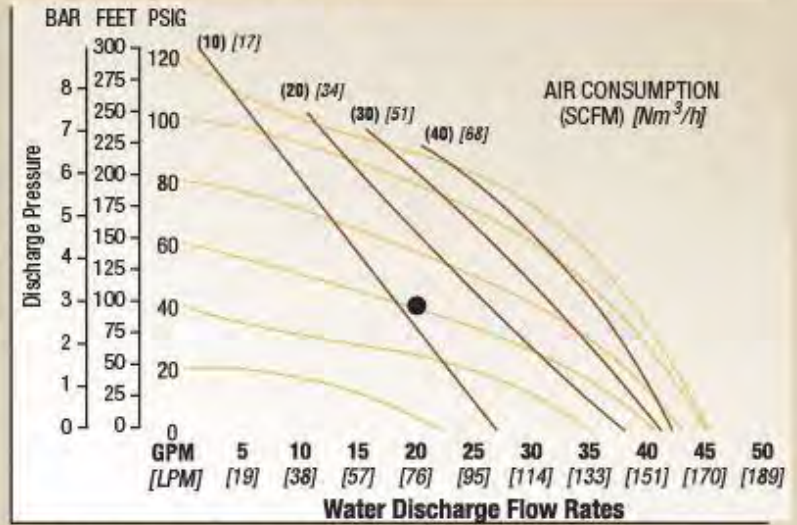
## PERFORMANCE DATA

### NPF25

#### 1"



Air Inlet.....	6 mm (1/4")
Inlet.....	25 mm (1")
Outlet.....	19 mm (3/4")
Suction Lift.....	5.79 m Dry (19') 8.53 m Wet (28')
Displacement/Stroke.....	0.34 l (0.091 gal) <sup>1</sup>
Max. Flow Rate.....	170 lpm (45 gpm)
Max. Size Solids.....	3.2 mm (1/8")
Height.....	279 mm (11.0")
Width.....	267 mm (10.5")
Depth.....	201 mm (7.9")
Est. Ship Weight.....	Aluminum 12 kg (26 lbs) Stainless Steel 16 kg (36 lbs)



Flow rates indicated on chart were determined by pumping water.

For optimum life and performance, pumps should be specified so that daily operation parameters will fall in the center of the pump performance curve.

<sup>1</sup>Displacement per stroke was calculated at 70 psig (4.8 bar) air inlet pressure against a 30 psig (2 bar) head pressure

**Example:** To pump 76 lpm (20 gpm) against a discharge pressure head of 2.7 bar (40 psig) requires 4.1 bar (60 psig) and 22 Nm<sup>3</sup>/h (13 scfm) air consumption. (See dot on chart).

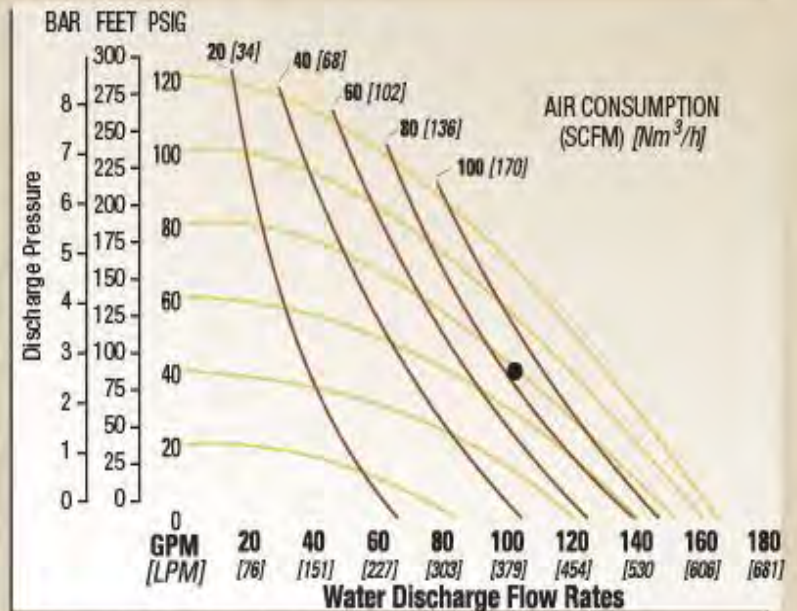
**Caution:** Do not exceed 8.6 bar (125 psig) air supply pressure.

### NPF50

#### 2"



Air Inlet.....	13 mm (1/2")
Inlet.....	51 mm (2")
Outlet.....	51 mm (2")
Suction Lift.....	6.9 m Dry (22.7') 8.6 m Wet (28.4')
Displacement/Stroke.....	2.6 l (0.70 gal) <sup>1</sup>
Max. Flow Rate.....	623 lpm (164.7 gpm)
Max. Size Solids.....	6.4 mm (1/4")
Height.....	668 mm (26.3")
Width.....	404 mm (15.9")
Depth.....	343 mm (13.5")
Est. Ship Weight.....	Aluminum 32 kg (70 lbs) 316 Stainless Steel 51 kg (112 lbs) Ductile 47 kg (104 lbs)



Flow rates indicated on chart were determined by pumping water.

For optimum life and performance, pumps should be specified so that daily operation parameters will fall in the center of the pump performance curve.

<sup>1</sup>Displacement per stroke was calculated at 70 psig (4.8 bar) air inlet pressure against a 30 psig (2 bar) head pressure

**Example:** To pump 102 GPM against a discharge pressure head 40 psig requires 80 psig and 85 scfm air consumption

**Caution:** Do not exceed 8.6 bar (125 psig) air supply pressure.



Distributor  
 Brewer Cote of Arizona  
 The Pavement Maintenance Specialists  
 5226 W Missouri Avenue, Glendale, AZ 85301  
 Tel. 623-931-3728 Toll 888-933728  
 www.brewercoteaz.com sales@brewercoteaz.com

# GLENZOIL 20 PLUS

## PRODUCT DESCRIPTION

This crack sealant barrier material is a unique, biodegradable, non-toxic liquid that prevents tracking and picking of freshly applied hot-melt sealants. It forms a temporary protective barrier that allows traffic immediate access to the repaired pavement, yet it does not affect the sealant or asphalt. Glenzoil 20 Plus requires only one person to apply, saving labor costs, and eliminates the mess and costs associated with conventional blotting materials.

## PRODUCT FEATURES

- All Natural
- Biodegradable
- Contains No Petroleum/Silicone
- Non Flammable
- Non Toxic
- No Harmful Environmental Effects

## PRODUCT BENEFITS

- Cost Effective
  - Requires one person to apply
  - Eliminates using sand and associated costs
  - Completes the job in less time
  - Decreases job cost & increases production
  - Eliminates need to set up long stretches of cones
- Easy to Use
  - Apply with hand held sprayer directly to sealant
  - Does not require specialized application equipment
- Safe to Use
  - Non Toxic



Item No.	Description
G7-5G	Glenzoil 20 Plus - 5 Gallon Pail
G7-4CS	Glenzoil 20 Plus - 4 Gallon Case
G7-55	Glenzoil 20 Plus - 55 Gallon Drum



## GLENZOIL 20 PLUS

---

**GENERAL:** EMULSO Glenzoil 20 Plus is a liquid specifically designed to prevent tracking of freshly applied hotmelt crack and joint sealants. When properly applied to the surface of the sealant, **Glenzoil 20 Plus** will provide a barrier between the sealant and the vehicle tires thereby eliminating picking and tracking of the sealant until it has set up.

**PERFORMANCE SPECIFICATIONS:** **Glenzoil 20 Plus** will prevent the picking of freshly applied hot-melt rubberized sealants with no effect on the composition or performance of the sealant or surrounding asphalt. It will provide an effective barrier over the surface of the sealant without excessive evaporation even when applied to the sealant at their recommended pour temperatures. **Glenzoil 20 Plus** will effectively prevent picking of the sealant until such a time as the sealant cures. After approximately thirty to sixty minutes, **Glenzoil 20 Plus** will dissipate leaving only a slight residue which will wash away with the first rainfall. **Glenzoil 20 Plus** contains no surfactants which have shown to significantly reduce the slip resistance of the sealants surface. Friction testing has shown **Glenzoil 20 Plus** to have no more effect on the slip resistance of the sealant than water. **Glenzoil 20 Plus** contains no hazardous ingredients and is not harmful to the user or the environment.

**APPLICATION:** Successful application is generally achieved with the use of a hand held pump up sprayer. Application rate will vary depending on the sealant temperature, ambient temperature, surface temperature, width and depth of the crack, distance and time of application after the application of sealant, traffic volume, etc. On average, rate of application will be one gallon of **Glenzoil 20 Plus** to every 50 - 100 gallons of hot-melt rubberized sealant.

Spray **Glenzoil 20 Plus** directly onto the surface of the sealant. An adjustable tip on the spray wand is necessary to adjust the spray stream to a width that will cover the sealant in one pass. The entire surface of the sealant must be wetted with **Glenzoil 20 Plus** to prevent picking of the sealant. Although **Glenzoil 20 Plus** is effective when applied immediately following the application of the sealant, yield is better if the sealant is allowed to seek its level and begin to cool, especially with wide or deep sealant reservoirs and wide or thick band-aid overlaps.

**PACKAGING:** Packaging of EMULSO **Glenzoil 20 Plus** consists of individual 5 U.S. gallon plastic pails each weighing 47 pounds. Standard palletization consists of 36 pails weighing 1752 pounds. Pails contain a lid pour spout for easy transfer to spray equipment on the job site.

**STORAGE:** Pallets should not be stacked higher than two high. Pails may be stored outside. If frozen, thaw, shake well and use. Shelf life is one year.

**SAFETY PRECAUTIONS:** Before using **Glenzoil 20 Plus**, all personnel involved with the use of **Glenzoil 20 Plus** should read and understand the MATERIAL SAFETY DATA SHEET for EMULSO **Glenzoil 20 Plus**. Personnel should also read and understand the MATERIAL SAFETY DATA for the hot-melt sealant being used in conjunction with **Glenzoil 20 Plus** before sealing is started. DO NOT test the effectiveness of **Glenzoil 20 Plus** by touching the sealant with unprotected skin. It is important to note that the application of **Glenzoil 20 Plus** to the surface of the hot-melt crack sealant will not significantly cool the sealant and skin contact with the hot sealant material will cause burns.

**WARRANTY:** EMULSO CORPORATION warrants that **Glenzoil 20 Plus** will perform as outlined in this product data sheet. EMULSO shall not be responsible for improperly placed or misused material. Remedies against EMULSO CORPORATION, as agreed to by EMULSO, are limited to replacing nonconforming product or refund (full or partial) of purchase price from EMULSO CORPORATION. All claims for breach of this warranty must be made within thirty days of the date of use or six months from the date of delivery by EMULSO CORPORATION, whichever is earlier. There shall be no other warrantless expressed or implied.



## ElastoFlex 670 Hot-Applied Crack and Joint Sealant

ElastoFlex 670 is a hot applied, polymer modified crack and joint sealant for use with asphalt and concrete pavements. This product applies and sets up best in up to hot temperatures, and is highly durable in cold to very hot climates. ElastoFlex 670 is self-leveling, fast setting and quick melting. Formulated with a medium viscosity for all-round ease of application, it is ideal for highways, county roads, municipal streets, parking lots and pathways. ElastoFlex 670 delivers high performance at a moderate cost

### Application

Read and follow application instructions before use.

This product must be heated using indirect heating methods, either a double boiler or hot oil circulating kettle. Equipment must have means of maintaining constant agitation to the material.

**Maximum safe heating temperature: 400°F (204°C)**  
**Recommended application temperature: 380°F (193°C)**

### Packaging

Cardboard ZipBox Packaging or Fully Melt-able Packaging

Test	Specification	Method:	Result:
Cone Penetration : 77°F (25°C), 150g, 5s :		ASTM D5329	30 dmm max
Softening Point :		ASTM D36	210°F (99°C) min
Flexibility : 1 in (25mm) mandrel, 90 deg bend, 2s :		ASTM D3111	Pass 30°F (-1°C)
Ductility : 77°F (25°C) :		ASTM D113	25 cm min
Resilience : 77°F (25°C) :		ASTM D5329	30% min
Asphalt Compatibility : 140°F (60°C), 72 hr :		ASTM D5329	Pass

### Warranty

**Maxwell Products, Inc.** warrants that our products will be free from defects in material or workmanship and will conform to our published specifications at the time of shipment. In the event our products fail to conform to our published specifications at the time of shipment, we will, at our expense and sole option, replace our defective product or give you a full or partial refund of the purchase price from Maxwell Products. Claims must be made within three (3) months of the date of purchase.

**MAXWELL PRODUCTS** HEREBY DISCLAIMS ALL OTHER WARRANTIES, EXPRESS OR IMPLIED, INCLUDING, BUT NOT LIMITED TO, ANY IMPLIED WARRANTY OF MERCHANTABILITY AND ANY IMPLIED WARRANTY OF FITNESS FOR A PARTICULAR PURPOSE.



# BREWER COTE <sup>®</sup> *of Arizona*



The QwikFire Cracksealant Melter was designed for the serious applicator, by experienced Pavement Maintenance Specialists. This gravity flow, (pump system optional) oil jacketed workhorse is powered by an 8 hp electric start engine, including quick heat up (less than 1 hr.) and quiet operation. Electronic ignition, material, and oil thermostats, you don't have to worry about over-heating and additional training. Our hydraulic controlled auger mixing system actually grinds the cold sealant for excellent recovery and performance. The QuickFire Melter features the lowest (46") sealant loading deck in the industry and has a comfortable curbside operation. The U design allows material to flow to the rear for the most efficient application and with the removable top, the easiest to clean.

## Features

- Oil jacketed design that completely wraps around to allow heat up time in less than an hr.
- 1" Thick high temperature ceramic insulation.
- Electronic ignition to avoid overheating material, and temperature control on both material and oil.
- 8 hp Briggs and Stratton engine with electric start and charging.
- Bolt on lid for easy cleaning and agitator maintenance.
- Sealed agitator shaft with grease zerk.
- Drag King and V Squeegee Hangars
- 500,000 BTU Hand Torch with hose for warming application tools
- The Tank and Oil Jacket is designed with 3/16" gauge steel, the inner heat shield is 10-gauge steel.
- Hydraulic Speed control mixer, with forward and reverse

## Options

- |                                 |                                      |
|---------------------------------|--------------------------------------|
| 8 hp Honda Engine               | 11 hp Propane Engine                 |
| Additional Propane Tank         | 2 5/16" Ball Hitch (Pintle included) |
| Special Paint                   | Deck Insulation                      |
| Custom Configurations           | Pump Systems                         |
| (Built to mount across trailer) | (13 hp Upgrade)                      |
- \* All specifications are subject to change without notice

## Specifications

	<u>50 gal Skid</u>	<u>50 gal</u>	<u>75 gal</u>	<u>100 gal</u>	<u>100 gal pumper</u>
Weight	450 lbs	1000 lbs	1250 lbs	1500 lbs	2000 lbs
Length	6'-0"	10'-6"	12'-0"	12'-8"	15'-4"
Width	3'-10"	5'-3"	5'-3"	5'-3"	6'
Height	2'-6"	4'	4'	4'-6"	4'-10"
GVW	—	2,000 LB	2,500 LB	3,000 LB	3,500 LB

## Specifications

**Optional Pump Specification's**  
 1 1/2" Flowserve Pump with bypass for Circulation  
 24 volt Electrical Heated 20' Hose w/Trigger pump Control  
 1 yr. Manufacturer's Warranty

**Standard Engine Specification's**  
 8 hp Electric Start Briggs & Stratton Intek I/C  
 1 yr. Manufacturer's Warranty

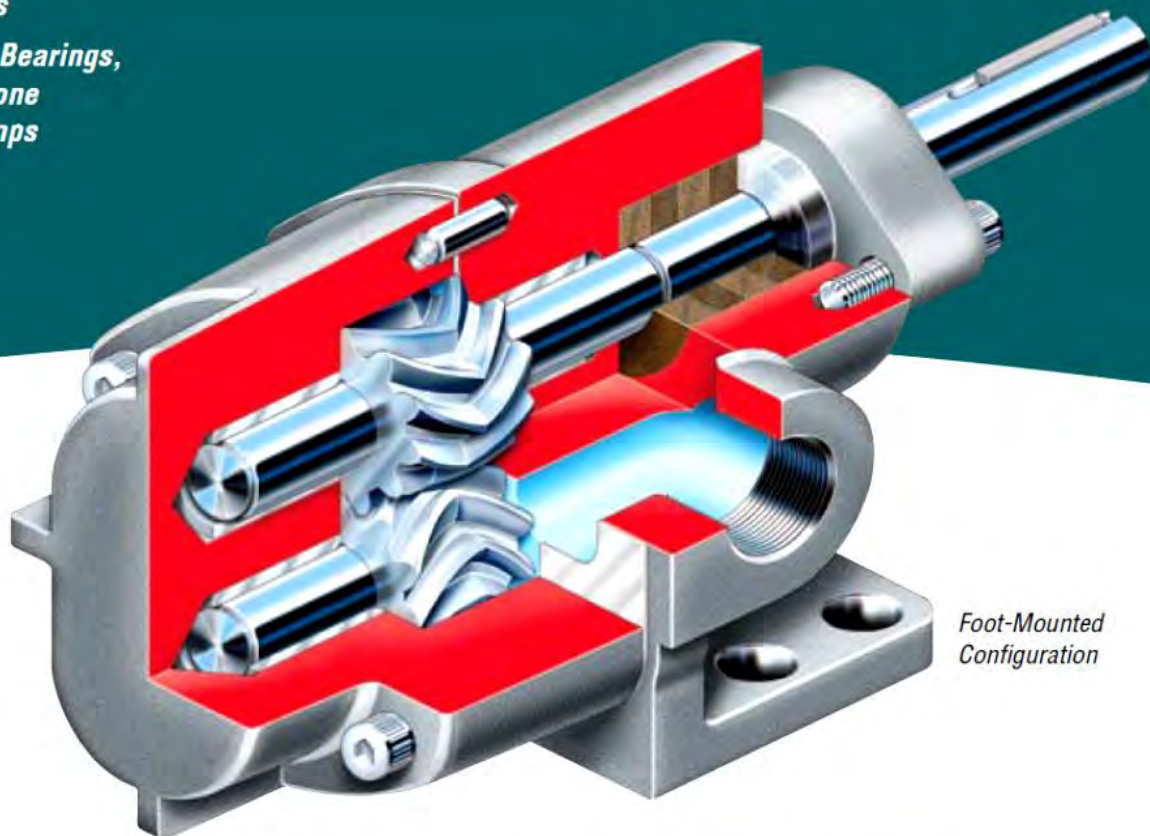
If you don't see what you're looking for ask your Brewer Rep ~ Trailer Spec's referenced

### THE PAVEMENT MAINTENANCE SPECIALISTS

**5226 West Missouri Avenue Glendale Arizona 85301**

**www.brewercoteaz.com TEL. 623-931-3728 TOLL 888-931-3728 FAX 623-842-0714 sales@brewercoteaz.com**

**GA Series**  
**Between Bearings,**  
**Herringbone**  
**Gear Pumps**



Foot-Mounted  
 Configuration

*GA Series gear pumps have long been workhorses in highly viscous applications within a multitude of industries due to their dependability, efficiency and low total life cycle costs. Engineered to reliably pump viscous fluids over a broad range of flows and pressures, the GA Series' superior between bearings, external gear design offers the benefits of pulse-free operation, dry-run capability and ease of maintenance.*

**Operating Parameters**

- Flows to 27 m<sup>3</sup>/h (120 gpm)
- Speeds to 1800 rpm
- Viscosities to 50 000 ssu
- Temperatures to 175°C (350°F)
- Pressures to 17 bar (250 psi)
  - Flange Mounted: to 17 bar (250 psi)
  - Close Coupled: to 10 bar (150 psi)
  - Foot Mounted: to 17 bar (250 psi)

**Features and Benefits**

**Two-Piece Doweled Construction** ensures accurate alignment and facilitates maintenance by allowing faster access to pump internals without disturbing piping.

**Stuffing Box** on long-coupled configuration allows for ample packing or mechanical seals for greater flexibility. To increase uptime and reduce maintenance costs, the stuffing box is exposed to suction pressure only.

**Full Hydraulic Balance** eliminates need for specialized balancing devices or thrust bearings.

**Suction and Discharge** passages designed for free, even flow and greater suction lift capability.

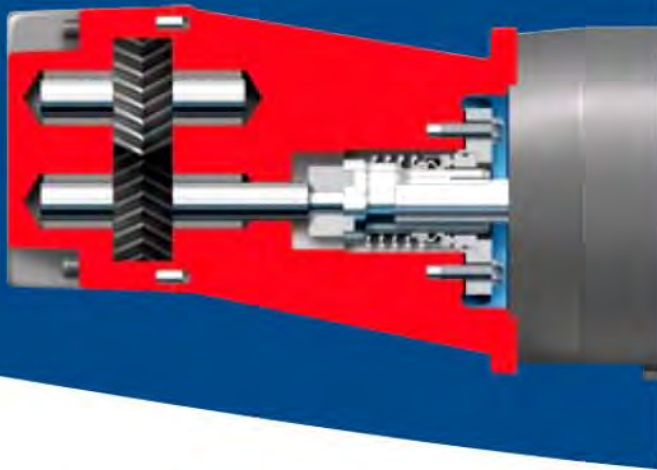
**Horizontal and Vertical Suction and Discharge Openings** on sizes 1-4 of the flange-mounted and close-coupled designs permit greater piping flexibility.

**Standard Carbon Sleeve Bearings** are self-lubricating for handling low-viscosity fluids. Bronze bearings are available for dirty fluid applications.

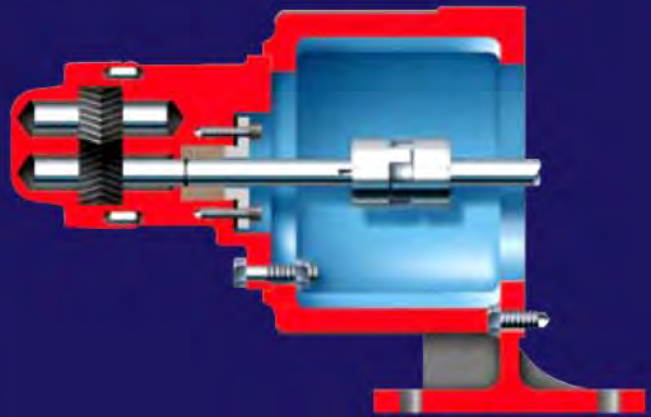
**Precision Machined Teeth** engage gradually, preventing trapping of liquid and eliminating shock loading.



### Close-Coupled Configuration



### Flange-Mounted Configuration



### Multiple Mounting Configurations

The cast iron GA Series pumps are available in three mounting configurations – foot-mounted, flanged and close-coupled. With its multiple options and modular design, GA Series pumps can be customized to satisfy a wide range of applications.

- **GAS:** Foot-mounted
- **GAF:** Flange-mounted
- **GAC:** Close-coupled

### Available Options

- Integral safety relief valve provides short-term emergency bypass
- Mechanical seal ensures positive sealing
- Mechanical seal with inboard shaft bearing for belt, chain or overhung gear drives
- Bronze sleeve bushings for dirty fluid applications

### Engineered for Low Cost of Ownership

#### Low Installation Costs

- Variety of mounting arrangements
- Horizontal and vertical suction discharge openings
- Stuffing box accommodates packing or mechanical seals

#### Low Maintenance Costs

- Minimal shaft deflection
- Reduced bearing loads and shaft deflection
- Accurate alignment with two-piece doweled construction
- Reduced wear rates

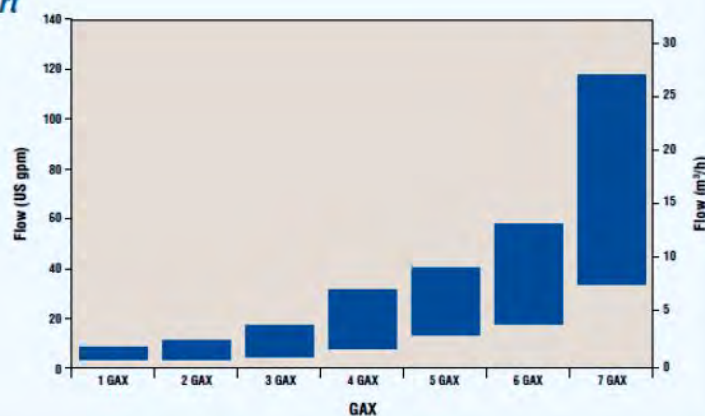
#### Low Operating Costs

- Prolonged service life
- Efficient operation over a broad range of speeds, pressures and viscosities
- No speed reducers
- Only one coupling guard

### GA Series Quick Selection Chart

This chart may be used to identify the particular GA Series pump model and the corresponding performance curve at the desired flow rate. It is meant to direct the user to the appropriate performance curve, not to be a substitute for it.

The ranges shown are based on typical viscosities and speeds and assume zero differential pressure.





**10 Gallon Mini Melter** is an economical solution for smaller jobs. It can provide hot material in 20 min or less. It is the stationary version of Our popular MA10 wheeled unit. Both inner and outer tanks are built of heavy 14 gauge. steel. Standard features include temperature gauge with guards, built in hand agitator and a propane bottle platform (bottle not included). It comes with a 50,000 BTU burner, 10' hose regulator, striker, and draw off valve. The kettle is capable of melting up to 600 lbs. of sealant per day.

#### Specifications

Length - 29" Width - 30" Height - 32"

Capacity - 10-gal Weight - 95 lbs

#### Distributor

Brewer Cote of Arizona "The Pavement Maintenance Specialists"

5226 W Missouri Avenue, Glendale, Arizona 85301

www.brewercoteaz.com Tel.623-931-3728 Toll 888-931-3728 Fax 623-842-0714 sales@brewercoteaz.com



**30-Gal Flex Kettle** can provide hot material in 30 min or less. It is built with 14 gauge steel. Standard features include temperature gauge with guard, built in hand agitator, lifting handles, and hinged lid. Comes with a 50,000 BTU burner, 10' hose, regulator, striker, and draw-off valve. The kettle is capable of melting up to 1200 lbs. of sealant per day.

**Specifications:**

**Length - 45", Width - 26", Height - 38"**  
**Capacity 30 Gallon, Weight - 200 lbs.**

**55 gal Flex Kettle** can provide hot material in 30 minutes or less. It is built with 14 ga. steel. Standard features include temperature gauge with guard, built in hand agitator, lifting handles, and hinged lid. Comes with a 50,000 BTU burner, 10' hose, regulator, striker, and draw - off valve. The kettle is capable of melting up to 1800 lbs. of sealant per day.

**Specifications:**

**Length - 49", Width - 30", Height - 43",**  
**Capacity - 55 gallon, Weight - 245 lbs.**



**MA10 Melter/Applicator** is a fast and efficient method for the application of hot applied crack sealants. It can also apply materials from stationary kettles or any large Melter. It can be used without heat for cold pour materials. It is capable of melting and applying 600 lbs. of sealant per day.

MA10 is the result of over 25 yrs. of experience in the manufacture and design of Melter applicators. Both inner and outer tanks are built of heavy 14- gauge steel. Standard features include temperature gauge with guards, built in hand agitator, 1/4" thick steel wheels, propane bottle platform, (bottle not included), spring loaded hand-controlled release valve, 3" steel screed, and a stop plate to prevent "stringers" at the end of a run. It comes with 50,000 BTU burner, 6' hose, regulator, and striker.

#### Specifications

Length - 47", Width - 27", Height - 36",  
Capacity - 10-gal , Weight 130 lbs.

#### Distributor

Brewer Cote of Arizona "The Pavement Maintenance Specialists"  
5226 W Missouri Avenue, Glendale, Arizona 85301

www.brewercoteaz.com Tel.623-931-3728 Toll 888-931-3728 Fax 623-842-0714 sales@brewercoteaz.com



#### SPECIFICATIONS

Length – 17”  
Width – 15”  
Height – 7”  
Weight – 17 lbs.

The **SH-10 Retro-Fit Burner** is specifically designed to replace the conventional torch type burner supplied with most U.S. Built MA10 Melter / applicators and 10 gal. mini Melter's. It is also usable in some Chinese built “knock-off” units utilizing a torch type burner (check your unit dimensions for fitment). Simple sheet metal modifications to the front and rear of the outer sheet metal surfaces are required for installation. Torch valve, hose and regulator are retained after a simple orifice ex-change. Units receiving the properly installed modification will yield initial melting and recovery speeds equaling that of factory Soft Heat machines. No more torch assembly to lose and no more blow-outs (metal integrity and a melting chamber free of burnt or charred material is critical in selecting a unit for modification) This modification kit presents a cost effective way to experience the revolutionary performance and fuel savings of the next generation crack sealant machines that are Soft Heat.

Brewer Cote of Arizona “The Pavement Maintenance Specialists”  
5226 West Missouri Avenue, Glendale Arizona 85301

[www.brewercoteaz.com](http://www.brewercoteaz.com) Tel 623-931-3728 Toll 888-931-3728 Fax 623-842-0714 [sale@brewercoteaz.com](mailto:sale@brewercoteaz.com)



#### SPECIFICATIONS

Length – 45”

Width – 16”

Height – 7”



The **SH-30 Retro-Fit Burner** is specifically designed to replace the conventional torch type burner supplied with most U.S. Built 30 gallon direct fire Melter's manufactured through the last decade. It is also usable in some Chinese built "knock-off" units utilizing a torch type burner (check your unit dimensions for fitment). Simple sheet metal modifications to the torch entry side and bottom of the outer sheet metal surfaces are required for installation. Torch valve, hose and regulator are retained after a simple extension tube and orifice exchange is installed. Units receiving the properly installed modification will yield initial melting and recovery speeds equaling that of factory Soft Heat machines. No more torch assembly to lose and no more blow-outs (metal integrity and a melting chamber free of burnt or charred material is critical in selecting a unit for modification) This update kit presents a cost effective way to experience the revolutionary performance and fuel savings of the next generation crack sealant machines that are Soft Heat.

Brewer Cote of Arizona "The Pavement Maintenance Specialists"

5226 West Missouri Avenue, Glendale Arizona 85301

[www.brewercoteaz.com](http://www.brewercoteaz.com) Tel 623-931-3728 Toll 888-931-3728 Fax 623-842-0714 [sales@brewercoteaz.com](mailto:sales@brewercoteaz.com)

**Thermoplastic Technology.....Industry Breakthrough**



**CRACK•RITE™**  
The Pavement Life Extender™

# **CRACK•STIX™**

**Direct Heat "Rubberized" Crack & Joint Sealant**

**PATENTED**  
**Elastomeric Compound**  
**Polymer Modified**

**Multi-Use For Asphalt & Concrete**  
**Meets ASTM/Federal Specifications**  
**Super Resilient...Permanent Bond to Sidewalls**  
**100% Water Tight Seal**  
**Traffic Ready In 20 Minutes**  
**Lifetime Guarantee**

1 1/2" Diameter  
(Splice for narrow cracks or  
double over for larger cracks)



**Seals In It...**  
**Not On It...**



**Professional Results...No Melters...No Pour Pots**  
**The Only Permanent Crack Repair**

# CRACK•STIX™

**DIRECT HEAT "Rubberized" Crack & Joint Sealant**

## Technology Breakthrough...

Now for the first time, contractor-type results in 3 easy steps using 3 tools. **CRACK•STIX™** come in one multipurpose size. They are User Friendly & Ready-To-Use: no mixing, nothing to add, just uncoil, cut-to-length, pack & heat. **CRACK•STIX™** are flexible & can be stretched & shaped to custom fit the repair. The rubberized compound melts/liquefies instantly & cures quickly (traffic ready in

less than 20 minutes). The self-leveling sealant goes **inside the crack...not over the crack...less waste**, no tracking or unsightly residue. The Multi-Use formula can be used on asphalt & concrete pavement.

## Why HOT, Direct HEAT Process?

In the past, most contractors have had no choice but to use cold-pour or caulking-type fillers. Cold applied products fill from the bottom-up & do not

permanently bond/seal to the crack sidewalls. **CRACK•STIX™** are hot applied, using a patented, direct heat process. **CRACK•STIX™** form a permanent bond to the sidewalls of the crack or joint & provides a (liquid rubber) 100% water-tight seal. This seal will remain flexible & intact through the winter & summer expansion/contraction cycles.

## Permanent Pavement Repair

**Elastomeric Compound**

**1/2 inch Diameter**

**Melt-Away-Wrap... Keeps hands clean**



**Easy to use... Low Labor Costs!**

**Self leveling, No tracking**

**Pliable...Conforms to shape of crack**

## Multi Use Formula...Professional Results...



**Asphalt to Concrete**



**Asphalt to Asphalt**



**Concrete to Concrete**

## 3 Easy Steps...

**Clean it...** Take a screwdriver & scratch out all debris from inside the crack, then take a whisk broom & sweep it clean. *Crack must be dry.*

**Pack it...** uncoil & cut the appropriate size stix & shape/pack into crack with fingertip pressure. Using the screwdriver, press the stix into crack approximately 1/16" to 1/8" below actual pavement surface level. To achieve a neat overall appearance, do not overfill crack. Stretch for narrow cracks, double over for wider cracks. **The material seals In It...Not On It.**

**Melt it...** take propane torch & light it. Adjust bright blue part of flame to 1" long. Holding the flame 1-1/2" from stix, move the flame from side to side in a slow & even motion, heating no more than one foot at a time (melt stick until liquid) Seal cures in 20 minutes & is ready for traffic.

## Used By:

Parking Lot Contractors  
Paving Contractors  
Driveway Contractors  
Homeowners  
DPW & DOT  
Water Authorities  
Municipalities  
Maintenance Engineers  
Park & Recreation Depts.

## Used For:

Cracks & Joints  
Expansion / Transition Joints  
Transverse / Longitudinal Joints  
Utility Cuts / Control Joints  
Traffic Loops, Hydrants  
Parking Lot, Sidewalk, Wheel Chair Ramps  
Golf Cart Paths  
Linear Parks

## Distributor

Brewer Cote of Arizona

5226 W Missouri Avenue, Glendale, AZ 85301

Tel. 623-931-3728 Toll 888-931-3728 Fax 623-842-0714

[www.brewercoteaz.com](http://www.brewercoteaz.com)

[sales@brewercoteaz.com](mailto:sales@brewercoteaz.com)

**CRACK•RITZ**  
The Pavement / Life Extender™

**CRACK•STIX™**





# QUIK-MARK™

SOLVENT & WATER BASED INVERTED MARKING PAINTS

On The Job - On the Mark!

QUIK-MARK™ will Help you do the job Right! From Surveying to Public Utilities Work, Underground Hazard Identification to Construction, Asphalt, Concrete and Grounds Keeping. QUIK-MARK™ is on the Mark! Cleanly and Professionally!

- ☞ Large Assortment of Colors to choose from
- ☞ High-Solids formulation for Bold, Bright, Visible Markings
- ☞ Convenient Spray-Thru™ cap and Non-clogging Tip
- ☞ One-Stroke Application & One-Coat Coverage
- ☞ Use on Gravel, Soil, Grass, Stone, Concrete, Asphalt, Pavement & Other Surfaces
- ☞ Application Marking Wands Available



Distributor

Brewer Cote of Arizona "The Pavement Maintenance Specialists"  
5226 W Missouri Avenue, Glendale Arizona 85301

www.brewercoteaz.com Tel. 623-931-3728 Toll 888-931-3728 Fax 623-842-0714 sales@brewercoteaz.com

# SURE STRIPE 4000

## This Professional Piston Pump Airless Striper Sets New Standards for Value!

The 4000 is the compact piston pump striper that delivers the professional results and range of features needed by pavement striping contractors—and it's an incredible value!

It's based on our proven LP Piston Pump used daily by thousands of painting contractors. The large one-piece piston along with Airlessco's patented triple-life packing system results in reduced maintenance, lower operating costs, and longer equipment life. The clutch actuated paint system features an electronic pressure control system.

The 4000 is powered by a dependable Honda GX series commercial OHV 4-cycle engine. It's built on a small, compact frame, that's easy to use, and quick to clean. Designed in balance & light weight make it ideal for one-man operation. Foot operated parking brake holds machine on inclines.

Our Contractor Series spray gun mounts on any corner, has a quick release for painting parking curbs or pavement using stencils. It features a tungsten carbide ball and seat, the "No Drips" REV-GUARD™ base, and our patented REV-TIP™ reversible tips that clear clogs literally in a snap.

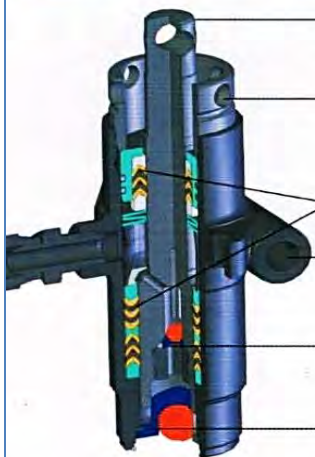
### SURE STRIPE 4000 Specifications:

Power	Honda 4 HP with oil alert
Max Pressure	0-3000 PSI
Max Output	.9 Gallons per minute 3.4 Liters per minute
Max Tip Size	.029 inches

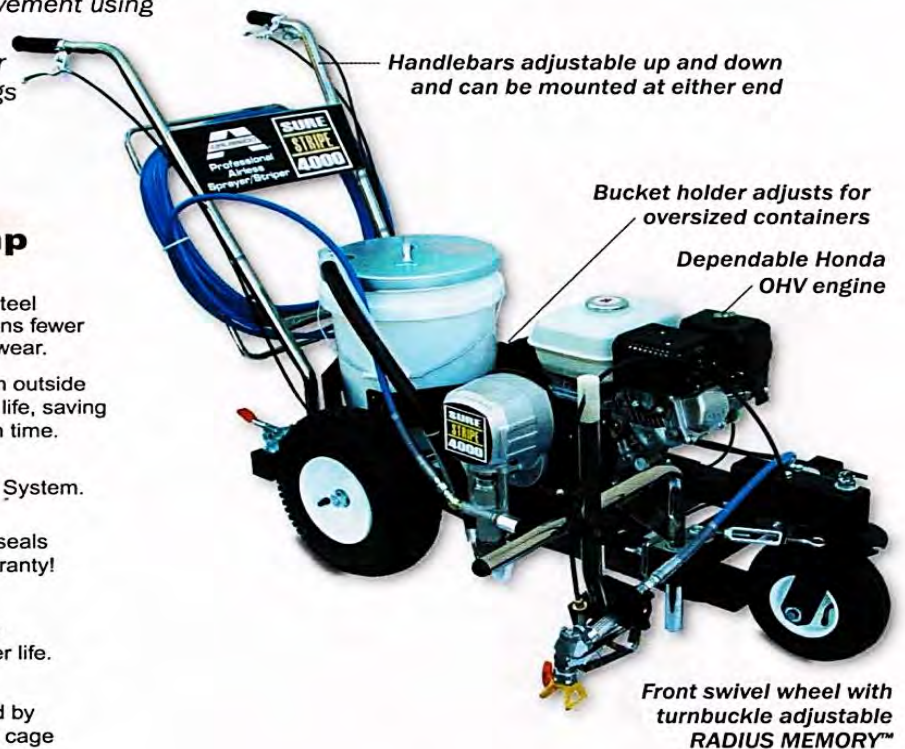
### Shipped Complete:

Part #	SURE STRIPE 4000 with Contractor Series Spray Gun and 50' of high-pressure hose.
305-227	

### LP Piston Power Airless Pump



- Super hardened, stainless steel piston. Large diameter means fewer cycles per gallon, reducing wear.
- Packing tension adjusts from outside the pump. Extends packing life, saving repair costs & reduces down time.
- Patented Triple-Life Packing System.
- 1-piece pump body with no seals to leak or wear-Lifetime Warranty!
- Tungsten carbide seats give increased gallonage & longer life.
- Ball and seat life is extended by self-centering, high-flow ball cage for positive valve operation.



Distributor  
Brewer Cote of Arizona  
The Pavement maintenance Specialists  
5226 W Missouri Avenue, Glendale, AZ 85301  
623-931-3728 888-931-3728 Fax 623-842-0714  
www.brewercoteaz.com Sales@brewercoteaz.com



001-668 July 04

# SURE STRIPE 4500

## Big Pump Striping Power Available in a Compact Frame

The compact convenience and flexibility built into the 4000 with the added advantage of Airlessco's SL Slow-Stroker™ paint pump. The SL pump has a large one-piece stainless steel piston, stainless pump body and check balls. Extra large tungsten carbide reversible seats, along with our patented triple-life packing system results in reduced maintenance, lower operating costs, and longer equipment life.

The pump has the power to spray a wide variety of pavement and athletic field striping paints; with an available second gun that lets you stripe lines up to 24" (60cm) wide.

The front wheel on the 4500 can remain locked for straight lines, or be operator released from the handlebars, allowing the front wheel to swivel when painting curves or circles. Inexpensive adjustable turnbuckles provide RADIUS MEMORY™ for consistent striping of arcs and circles.

Powder coated frame, anodized and chrome plated hardware are evidence this equipment is "Built to Last" through many years of daily professional use.

### Advantages & Features:

- Same sturdy powder coated chassis, convenience, and flexibility found in the SURE STRIPE 4000.
- Highest performance for a compact striper.
- Heavy duty, no maintenance gearbox and clutch.
- Solid state electronic pressure sensor.
- High flow, high-pressure filter, filters the paint without restricting paint flow to the guns.
- Suction system has an easy clean solvent resistant core.
- Swivel spray heads can be set at the perfect angle for spraying curbs or for overlapping spray patterns for extra wide lines.
- Professional Airless Gun with 50' x 3/8" high pressure airless hose standard

### SURE STRIPE 4500 Specifications:

Power	Honda 5.5 HP with Oil Alert
Max Pressure	0-3000 PSI (207 Bar).
Max Output	1.3 GPM (5 Litres/min.)
Max Tip	1 gun @ 0.035 inch 1 x 12" (30cm) line. 2 gun @ 0.021 inch 2 x 12" (30cm) lines.

### Shipped Complete:

Part #	305-206	Sure Stripe 4500 with 1 gun
	305-176-99	Optional Second Gun Kit



# Airless Sports Field Stripers

## Feature/Specification Comparison Chart



### Airlessco FIELD STRIPE



### Airlessco FIELD STRIPE+



### Graco FieldLazer



#### Engine

Manufacturer/Power	Briggs & Stratton, 148cc 3.5 HP or Honda, 83cc 3 HP, w/Oil Alert	Honda, 118cc 4 HP w/ Oil Alert	Honda 31cc (No HP rating provided)
Operating RPM	Adjustable, approx. 2400 RPM	Adjustable, approx. 2400 RPM	5700-5900 RPM
Noise Level	Lawn mower, fast idle	Lawn mower, fast idle	String Trimmer, in use

#### Paint Pump System

Application Capabilities	Stripe fields and parking lots Mobile airless spray painting	Stripe fields and parking lots Mobile airless spray painting	Single use, sports fields only
Pressure Adjustment	Handlebar mounted mechanical control 0-2500 psi	Electronic Pressure Control 0-3000 psi	Fixed at 900 psi
Spray Undiluted Paint?	Yes, adjust pressure for proper atomization	Yes, adjust pressure for proper atomization	No. User dilutes paint as needed to atomize at 900 psi
Pump Volume Rating	.62 GPM @ 2500 psi	.8 GPM @ 3000 psi	.5 GPM @ 900 psi

#### Spray System

Gun Mount	Rolls directly on turf for consistent line width	Rolls directly on turf for consistent line width	Fixed, gun height changes as striper moves over uneven turf surfaces
Gun Type	Forged Aluminum w/ internal filter	Forged Aluminum w/ internal filter	Aluminum/Plastic w/ internal filter
Hose	50' of 1/4" hose	50' of 1/4" hose	25' of 3/16" hose
Spray Shields	Wheels around gun protect protect spray pattern -	Wheels around gun protect protect spray pattern	Spring loaded to turf to limit "hour glassing" of lines

#### Frame

Handlebars	Chromed steel, "no tools" adjustable and removable	Chromed steel, "no tools" adjustable and removable	Painted handlebar folds down
Front Wheel	Steel, front fixed, swivel opt.	Swivel w/ RADIUS MEMORY™	Plastic, Front wheel fixed
Rear Wheels	Steel, wide footprint turf tires	Steel, wide footprint turf tires	Plastic with narrow tires
Rolling Weight (w/5 Gal. H <sub>2</sub> O)	169 lbs.		174 lbs.      140 lbs.

#### Availability

Authorized Distributors	Authorized Distributors	Authorized Distributors
-------------------------	-------------------------	-------------------------

# The Striper/Sprayer That Sets the Pro User's Value Standards!



**FIELD STRIPE+ is light on its feet with wide footprint turf tires yet powerful enough to take on large paint spraying jobs like painting buildings or walls.**

## Specifications:

<b>Power</b>	Honda 5.5 HP OHV with oil alert
<b>Paint Pump</b>	Hardened stainless steel piston type
<b>Pressure</b>	Electronic controls user adjustable from 0-3000psi
<b>Max Output</b>	.8 Gal./min., 3 Liters/min.
<b>Max Tip Size</b>	.029"

## Shipped Complete:

<b>Model #</b>	305-222
	Includes spray gun, with 50' of airless high-pressure hose.

FIELD STRIPE+ offers top of the line features and value like a floating gun mount for consistent width lines on even the roughest field. Airlessco's handlebar releaseable front swivel wheel with turnbuckle based RADIUS MEMORY™ delivers smooth, consistent curves and circles.

The heart of this striper is our contractor proven hardened stainless steel piston-powered paint pump. It's designed for daily use by painting contractors—and we've been selling them worldwide for years. FIELD STRIPE+ can also be used as a mobile spray rig for large spray painting jobs like walls, fences, and buildings.

Spray pressure is electronically controlled by a clutch actuated paint pressurization system. The oversized piston is utilized along with Airlessco's patented triple-life packing system rated for 3000 gallons of use between repacking. This system has been proven to deliver reduced maintenance, lower operating costs, and longer equipment life.

True airless power means pressure is user adjustable up to 3000 psi. Not fixed at a low pressure that requires you mix paint and water precisely for good atomization. The power to atomize standard paint coating materials—including parking lot striping paints. This eliminates the hassle of precise dilution, mixing, and frequent refilling required by low pressure stripers.

Spraying with pure paint delivers a superior quality line faster. And pure paint adheres better to turf blades. So irrigation or rain won't wash your line away—meaning more days before restriping is needed.

The Bottom Line: FIELD STRIPE+ has the power and feature set to satisfy professional sports turf managers without breaking your budget.

## Advantages & Features:

- **STRIPES & PAINTS** – Roll it to stripe straight or release the front wheel to paint curved lines on athletic fields, & parking lots. Or use the quick release spray gun and 50' of hose to paint using stencils. Portability also makes it great for painting fences or covering graffiti.
- **CONSISTENT LINE WIDTH** – Gun rolls along on a floating mount to insure consistent line width on uneven surfaces.
- **STABLE** – Sturdy heavy-duty powder coated chassis, large pneumatic tires ignore divots and ruts for smooth striping on rough surfaces.
- **CONVENIENCE** – Foot operated parking brake. Spray directly from a standard 5-gallon paint container. Gun mounts on any corner, handlebars at either end. Gun mount and handlebars are easily removable for storage or transport.
- **PROFESSIONAL RESULTS** – Long lasting REV-TIP™ airless striping tips made of tungsten carbide for long life. Sprays crisp, clean, consistent width lines every time. Sizes available for up to 24" lines.
- **BUILT TO LAST** – 1 year Limited Warranty. Engine covered by Honda factory warranty. See warranty certificate for complete details.



## Distributor

**Brewer Cote of Arizona**

**The Pavement maintenance Specialists**

**5226 W Missouri Avenue, Glendale, AZ 85301**

**623-931-3728 888-931-3728 Fax 623-842-0714**

**www.brewercoteaz.com Sales@brewercoteaz.com**

# REV-TIP™ & REV-GUARD™

THE PRO'S CHOICE

## INTERCHANGEABLE

Fits Graco RAC™ IV & V, some Titan, & Wagner guards.

## POSI-LOC™ SYSTEM

Snap in centering of tip, no leaks, splashback or mess.

## COMPACT SIZE

Use in tight areas - smallest size - No splatter.

## EASIEST ASSEMBLY

Fewer parts - Less complicated takes only seconds!

## SEAL LOCATING HANDLE

Tip handle simplifies installing & aligning the seal.

## FINGER-TIGHT NUT

No tools required for assembly or adjustment.

## SPRAY CLEAN REV-GUARD™

Patented airfoil shape for a clean, no drip, application

## INDIVIDUALLY TESTED

Sized for highest quality and optimum performance.

## STRINGER HOLE

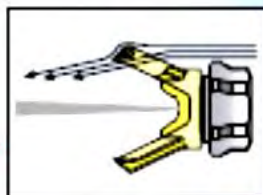
Hang tip for easy cleaning & storage

## HIGHEST QUALITY CARBIDE

Superior, micro-ground finish for extra long life and consistent size & spray pattern

## SINGLE-SEAL

Long life - no leaks - sprays all coatings.



# REV-TIP™

## REVERSIBLE AIRLESS SPRAY TIPS



- Longest Tip Life
- Consistent Pattern



Protected By U.S. Patent No. 5300984 Other U.S. & foreign patents applied 112



# Spray & Striping Tip Selection Chart

## TIP IDENTIFICATION:

1st 3-digits identifies it for airless paint spraying (P.N. 560-xxx) or for airless line striping (P.N. 562-xxxST), or for fine finish spraying (P.N. 571-xxx).

4th digit is the fan width - the number is half the fan width, e.g., 3 means a 10" fan.

5th and 6th digits are for the orifice size and is measured in thousandths of an inch, e.g., 17 = 0.017 inch - The higher the number, the larger the tip.

## REV-TIP™

Airless Paint Spraying  
P.N. 560-xxx  
Includes REV-TIP, metal seal & O-ring seal.

Sample:  $560-517$

1/2 Fan Width

Orifice Size



## REV-GUARD™

P.N. 561-001  
11/16-16 "F" Thread. Fits: Airlessco, ASM, Wagner (some), and Campbell Hausfeld.

P.N. 561-002  
7/8-14 "G" Thread. Fits: Graco, Wagner (some), Titan, Airlessco.



## SEALS

P.N. 561-029  
Metal Seal with O-Ring  
P.N. 561-028  
O-Ring Seal

REV-TIP™ for Painting P.N. 560-xxx  
REV-TIP™ for Striping P.N. 562-xxxST

For sizes not shown, call factory for availability.

REV-TIP™ for Painting Fan Width (12" from surface)		SPRAY PAINTING TIP - ORIFICE SIZE (Inches)														
in.	(mm)	.009	.011	.013	.015	.017	.019	.021	.023	.025	.027	.029	.031	.035	.039	.041
4-6	102-152	209	211	213	215	217	219	221	223	225	227	229				
6-8	152-203	309	311	313	315	317	319	321	323	325	327		335			
8-10	203-254	409	411	413	415	417	419	421	423	425	427	431				
10-12	254-305		511	513	515	517	519	521	523	525	527	531	535			
12-14	305-356			613	615	617	619	621	623	625	627	631	635	639	641	
14-16	356-406				715	717		721							739	741
16-18	406-457				815		819	821				831				
20-24	508-610															

Gun Filter	C = Coarse - 60 mesh F = Fine - 100 mesh	F	F	F,C	C	C	C	C	REMOVE FILTER							
Wood Interior	Lacquer, Varnish Stain, Sealer Enamel	.	.	.	.	.	.	.								
Wood Exterior	Exterior Stain Vinyl, Acrylic, Latex			.	.	.	.	.								
Masonry	Vinyl, Oil Base Alkyd Latex, Acrylic Block Filler Elastomer			.	.	.	.	.	.	.	.	.	.	.	.	.
Ceiling	Hi Build, Mill White							.	.	.	.	.	.	.	.	.
Structural Steel	Heavy Coatings							.	.	.	.	.	.	.	.	.

Water Flow Rate (gpm) (water @ 2000psi, 130 bar)	.12	.18	.24	.31	.38	.47	.57	.67	.77	1.03	1.31	1.63	1.80
Paint Flow Rate (gpm) (latex paint @ 2000psi, 130 bar/1.35 spec. g)	.10	.15	.21	.27	.33	.40	.49	.58	.66	.88	1.12	1.39	1.54
Pump Minimum Output (gpm)	.25	.25	.33	.40	.50	.60	.75	.88	1.0	1.25	1.5	2.0	2.2
Output (lpm)	1.0	1.0	1.25	1.5	1.9	2.3	2.8	3.3	3.8	4.7	5.7	7.5	8.2

	AIRLESSCO REV-TIP™	COMPETITOR A	COMPETITOR B	COMPETITOR C
Aerodynamic Non Drip Guard	•			
Finger Tight OK for Nut Requires Hand Tight Pressure	•	•	•	•
Snap Tight Tip Lock	•			
Low Profile Guard	•			
Seal Orientation Slot	•			
Tip Handle Hole for Spring	•			
No Seal Blow-By When Tip Is Not in Centered Position (1)	•			•
Seal Orientation Tool on Tip Handle	•			
Non Pin Diffuser (2)	•		•	•
Hardened Cylinder	•	•		
Long Life Metal Seal	•	•	•	•
Short Fluid Path (3)	•	•	•	•
Tip Fit Graco Series	•	•	•	•
Seal Installer on Tip	•	•	•	•
7/8 & 11/16 Gun Thread	•	•	•	•
Working Pressure Rating	5000 PSI	4050 PSI	5000 PSI	Working Pressure Unknown

(1) Uncontrolled Spray Back Toward User (2) No Pattern Distortion From Pin (3) No Sealing

NEW!

## Fine Finish REV-TIP™

Part # 571-xxx

NEW Double Orifice design for lower pressure airless spraying when you need finer atomization for a smoother finish on interior trim, cabinetry, shutters, and doors.

Fan Width Inches	(mm)	Orifice Size	
		.012	.014
4-6	102-152	212	214
6-8	152-203	312	314
8-10	203-254	412	414

## REV-TIP™ for Striping

P.N. 562-xxxST

Delivers consistent thickness spray pattern with crisp, well-defined edges. For striping pavement and sports fields.

Includes REV-TIP™, Metal Seal & O-Ring Seal.



## REV-TIP™ for Striping

Fan Width (6" from surface)

## STRIPING TIP ORIFICE SIZE INCHES

In	(mm)	.013	.015	.017	.019	.021
1-2	25-51	113ST	115ST	117ST		
2-4	51-102		215ST	217ST	219ST	221ST
4-6	102-152		315ST	317ST	319ST	321ST
6-8	152-203		415ST	417ST	419ST	421ST
Striping Paint			Oil Base	Oil Base	Latex	Latex

Patented by U.S. Patent No. 5,254,115. Other U.S. & Foreign Patents Applied For  
RAC is a trademark of Graco, Inc. © Copyright 2002, Airlessco by Durdach Co.

Form 001-441 **113**



# AIRLESS SPRAY GUNS

## ProLight Contractor Series

- ▶ Light trigger pull, light weight for all day comfort
- ▶ Convenient, thumb actuated trigger lock
- ▶ Attractive gold anodized protective finish
- ▶ Convertible model includes 4 & 2 finger triggers
- ▶ Uses 120-534 major repair kit compatible with Titan kit 580-034 and Graco kit 218-070
- ▶ Easy-clean 1-way filter with sturdy nylon reinforcing core
- ▶ Highest quality tungsten carbide ball & seat
- ▶ Durable stainless steel threads for attachments (not fragile aluminum as on some guns)
- ▶ Compact for easy use in tight spaces like inside cabinetry
- ▶ Hand tighten "No Tools Required" handle
- ▶ Long life needle seal
- ▶ Includes swivel hose connection
- ▶ 3700psi (250 BAR) Maximum Pressure



Part # 120-502  
ProLight Flat Handle  
2-Finger Trigger Gun



Part # 120-504  
ProLight Convertible  
Dual Trigger Gun

- ▶ **The ProLight Convertible Gun is standard on complete Model LP540, LP690, & SL electric & all gasoline powered sprayers**



## 008 Silver Airless Spray Gun

- ▶ Light trigger pull, light weight for all day user comfort
- ▶ Convenient, thumb actuated trigger lock
- ▶ Hand tighten "No Tools Required" handle
- ▶ Long life needle seal
- ▶ Uses repair kit compatible with multiple brands of guns
- ▶ Easy-clean 1-way filter with nylon reinforcing core
- ▶ Highest quality tungsten carbide ball & seat for long wear
- ▶ Durable steel threads for tip attachments
- ▶ Compact for easy use in tight spaces like inside cabinetry
- ▶ Maximum Pressure 3700 psi (250 BAR)

Part # 120-554  
008 Silver 4-Finger Trigger Gun  
Includes complete operation & service guide.





## Reversible REV-TIP™

Part # 560-xxx REV-TIP for Spray Painting  
562-xxxST REV-TIP for Striping

### POSI-LOC™ SYSTEM

Snap in centering of tip.  
No leaks, splashback or mess.

### SEAL LOCATING HANDLE

Tip handle simplifies installing & aligning the seal.

### EASIEST ASSEMBLY

Fewer parts - Less complicated takes only seconds!

### INTERCHANGEABLE

Can be used with most tip guards.

### HIGHEST QUALITY CARBIDE

Micro-ground for extra long life, consistent tip size & pattern.

### STRINGER HOLE

Hang tip from hole for cleaning

### SINGLE-SEAL

Metal seal - no leaks - sprays all coatings.



Each tip individually tested!



Easy to install & align!

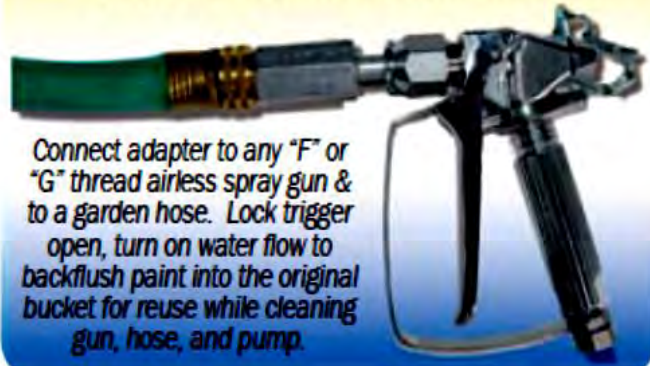
**NEW!**

## Quick Flush

*Cuts Cleaning Time & Saves Paint!*

Part # 170-005

Simple to Use...Fast to Finish!



Connect adapter to any "F" or "G" thread airless spray gun & to a garden hose. Lock trigger open, turn on water flow to backflush paint into the original bucket for reuse while cleaning gun, hose, and pump.

## Spray Gun & Hose Spray Packs



Part No: 002-013 Spray Pack includes:

120-504 ProLight Convertible 4/2-Finger Gun  
100-011 50' x 1/4" Hi-Flex Airless Hose

Part No: 002-025 Spray Pack includes:

120-502 ProLight 502 Flat Handle Gun  
100-011 50' x 1/4" HI-Flex Airless Hose

Part No: 002-015 Spray Pack includes:

120-554 008 Silver 4-Finger Gun  
100-011 50' x 1/4" Hi-Flex Airless Hose

See Airlessco REV-TIP™ Brochure (Form 001-449) for current listings of available tip sizes including "W" wide and FINE FINISH tips for Spraying, & Striping tips.

Copyright © 2004 Airlessco by Overtech Co. All rights reserved. Product specifications subject to change without notice.

PRODUCT FEATURE	AIRLESSCO REV-TIP™	COMPETITOR A	COMPETITOR B	COMPETITOR C
Aerodynamic Non Drip Guard	●			
Finger Tight Nut	●			
Requires Hand Tight Nut		●	●	●
Snap Tight Tip Lock	●			
Low Profile Guard	●			
Seal Orientation Slot	●			
Tip Handle Hole for Stringer	●			
No Seal Blow-By When Tip is Not in Centered Position (1)	●			●
Seal Orientation Tool on Tip Handle	●			
Non Pin Diffuser (2)	●		●	●
Hardened Cylinder	●	●		
Long Life Metal Seal	●	●	●	
Short Fluid Path (3)	●	●	●	
Tips Fit Graco Bases	●	●	●	
Seal Installer on Tip	●	●	●	
7/8 & 11/16 Gun Thread	●		●	●
Working Pressure Rating	5000 PSI	4050 PSI	5000 PSI	Working Pressure Unknown

(1) Uncontrolled Spray Back Toward User

(2) No Pattern Distortion From Pin

(3) No Spitting

## REV-GUARD™



■ Airfoil shape for a clean, no-drip application

■ Finger-tight nut, no tools required

■ More compact size to use in tight areas

Order #

561-002 REV-GUARD™ with  
with 7/8-14 (G) Thread

561-001 REV-GUARD™  
with 11/16-16 (F) Thread

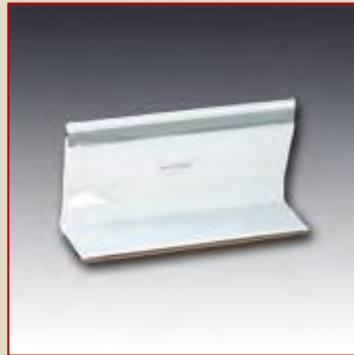


**Manufacturer of Reflective and Non-Reflective Pavement Markers**

- Reflective Pavement Markers
- Reflective & Non-Reflective Ceramic Pavement Markers
- Non-Reflective Plastic Pavement Markers
- Temporary Chip Seal/Overlay Pavement Markers
- Solar Pavement Markers
- Marker Adhesive Material
- Glass Spheres



Type: 932  
2-Y Two-Way Yellow



Type: 932  
1-W One-Way White



Type: 932  
2-Y Two-Way Yellow  
Double Cover



Type: 932  
1-W One-Way White  
Double Cover

**Chip Seal / Overlay Temporary Markers  
Model 932**

The polyurethane body of Apex Temporary Markers have great bending memory. The retroreflective tape is protected from oil and dirt by a clear plastic cover. Excellent for Chip Seal, Slurry Seal, or Temporary Delineation. Apex Chip Seal Markers have a minimum reflectance of 1800 Candle Power per foot-candle per Sq. Ft. and 0.10° observation and 0° entrance angle.

**REFLECTIVE TAPE**

Reflective tape shall be affixed along the top of the vertical section of the marker body on one or both sides. Reflective tape shall be .250" wide by 4.0" long metalized polycarbonate microprism retroreflective material with acrylic backing or equal, providing the following minimum optical performance with an observation angle of 0.2 deg, measured in candle power.

Entrance Angle	Specific Intensity
White 0°	3.5
White 30°	2.7
Amber 0°	3.0
Amber 30°	1.7

**ADHESIVE**

The factory applied adhesive to the marker base for bonding the marker on the pavement is a solid butyl rubber 1/8" thick, 3/4" wide on 1" wide release paper.

Markers available with no plastic cover, a single plastic cover with a single staple , or two plastic covers with three staples.

**Distributor**

**Brewer Cote of Arizona "The Pavement Maintenance Specialists"**  
5226 W. Missouri Avenue, Glendale Arizona 85301

www.brewercoteaz.com Tel. 623-931-3728 Toll 888-931-3728 Fax 623-842-0714 sales@brewercoteaz.com



# PREMIUM GLASS BEADS

### REFRACTIVE INDEX

The Beads have a refractive index of 1.5 when tested by the oil immersion method

### MOISTURE CONTENT

Does not exceed 0.01%

### SPECIFIC GRAVITY

Beads shall have a specific gravity between 2.40 & 2.60 @ 25° C  
Per ASTM D-153 Method A

### CHEMICAL STABILITY

Refluxing of a 50g sample of beads in a Soxhlet extraction apparatus for 8 hrs. with distilled water shall not produce more than a very slight reduction in luster or reflecting power of the beads

### FLOW

Beads shall be free flowing. A 23kg sample of beads, when emptied into service box screen Having sieve openings of 1.18mm (US Standard Sieve#16) shall pass completely through the Screen without shaking or any excessive hand manipulation.

### GRADATION

Catrans Specifications for Type II  
(8010-004 Dated Dec.22, 2009)

Sieve Opening	US Standard Sieve	% by Weight Passing
600 um	#30	100
250 um	#60	40-70
180 um	#80	15-35
106 um	#140	0-0.5

AASHTO Designation  
M247-13

Sieve Opening	US Standard Sieve	% by Weight Passing
1180 um	#16	100
850 um	#20	95-100
600 um	#30	75-95
425 um	#40	-
300 um	#50	15-35
180 um	#80	-
150 um	#100	0-5

### Distributor

Brewer Cote of Arizona The Pavement Maintenance Specialists

5226 W Missouri Avenue Glendale AZ 85301

www.brewercoteaz.com Tel. 623-931-3728 Toll 888-931-3728 Fax 623-842-0714 sales@brewercoteaz.com



## Manufacturer of Reflective and Non-Reflective Pavement Markers

- Reflective Pavement Markers
- Reflective & Non-Reflective Ceramic Pavement Markers
- Non-Reflective Plastic Pavement Markers
- Temporary Chip Seal/Overlay Pavement Markers
- Solar Pavement Markers
- Marker Adhesive Material
- Glass Spheres



4" Round  
Yellow / White



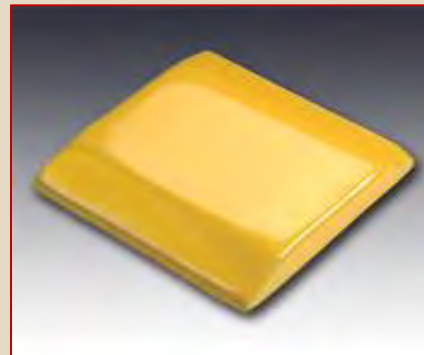
6" Round Channel  
Yellow / White



8" Round Channel  
Yellow / White



4" Oblong  
White



6" Jiggle Bar  
Yellow / White

### Apex Non-Reflective Ceramic Marker

Ceramic non reflective pavement marker glazed finish protects against weathering especially during rain, excellent day time visibility, available in high visibility white or yellow. A texture bottom helps them in place with epoxy. Ceramic non-reflective pavement markers Type A and Type AY consist of a heat-fired vitreous, ceramic base and a heat-fired opaque, glazed surface to produce the properties required in STANDARD SPECIFICATION JULY 2003, DOT, State of California.

#### Distributor

Brewer Cote of Arizona "The Pavement Maintenance Specialists"

5226 W. Missouri Avenue, Glendale Arizona 85301

www.brewercoteaz.com Tel. 623-931-3728 Toll 888-931-3728 Fax 623-842-0714 sales@brewercoteaz.com



**Manufacturer of Reflective and Non-Reflective Pavement Markers**

- Reflective Pavement Markers
- Reflective & Non-Reflective Ceramic Pavement Markers
- Non-Reflective Plastic Pavement Markers
- Temporary Chip Seal/Overlay Pavement Markers
- Solar Pavement Markers
- Marker Adhesive Material
- Glass Spheres



## NON-REFLECTIVE PLASTIC PAVEMENT MARKER

The 4" Non- Reflective Plastic Pavement Marker Conforms to the Following

Plastic Non-reflective pavement markers Types A & AY shall be, at the option of the Contractor, either Polypropylene or Acrylonitrile-Butadiene-Styrene (ABS) Plastic type.

Polypropylene non-reflective pavement markers shall consist of Polyester Resin Binder, inert organic filler material and colorant pigments and shall conform to The Provisions in California Standard Specifications 2010 Section 85-1.02B, "Non-reflective Pavement Markers."

ABS non-reflective pavement markers shall consist of ABS plastic conforming to the Requirements in ASTM Designation: D 4673, Designation ABS 1-2-2, and shall Conform to the provisions in California Standards Specifications 2010, Section 85-1.02B. The bottom of the ABS plastic pavement markers shall have areas of Integrally formed protrusions projecting from the surface to increase the Effective Bonding surface area & produce a structural bond with the pavement.

TEST	PROPERTIES	REQUIREMENTS
D	Luminance Factor, Type A White markers only, Glazed Surface	75 Min.
E	Yellowness index, Type A, White markers only, Glazed Surface	7 Max.
F	Color-yellow, Type AY, Yellow markers only, The chromaticity coordinates must be within a color box defined by California Test 669	Pass
G	Compressive Strength	1500 lb. Min.
I	Artificial weathering, 500 hrs. exposure, yellowness index	20 Max.

**Distributor**

Brewer Cote of Arizona "The Pavement Maintenance Specialists"  
5226 W. Missouri Avenue, Glendale Arizona 85301

www.brewercoteaz.com Tel. 623-931-3728 Toll 888-931-3728 Fax 623-842-0714 sales@brewercoteaz.com



**Manufacturer of Reflective and Non-Reflective Pavement Markers**

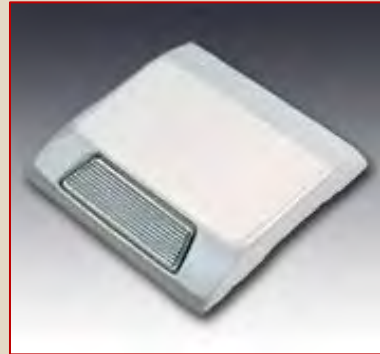
- Reflective Pavement Markers
- Reflective & Non-Reflective Ceramic Pavement Markers
- Non-Reflective Plastic Pavement Markers
- Temporary Chip Seal/Overlay Pavement Markers
- Solar Pavement Markers
- Marker Adhesive Material
- Glass Spheres



**4" Round  
Two-Way Yellow**



**4" Round  
One-Way White**



**6" Jiggle Bar  
One-Way White**



**6" or 8" Round  
Two-Way Yellow**



**6" or 8" Round  
One-Way White**

**Apex Retroreflective Ceramic Markers**

The Apex Retroreflective Ceramic Markers combine the Power of Brilliant Night-time Visibility with Self-cleaning Glazed Surface for Exceptional Daylight Visibility.

**Distributor**

**Brewer Cote of Arizona "The Pavement Maintenance Specialists"**

5226 W. Missouri Avenue, Glendale Arizona 85301

www.brewercoteaz.com Tel. 623-931-3728 Toll 888-931-3728 Fax 623-842-0714 sales@brewercoteaz.com



**Manufacturer of Reflective and Non-Reflective Pavement Markers**

- Reflective Pavement Markers
- Reflective & Non-Reflective Ceramic Pavement Markers
- Non-Reflective Plastic Pavement Markers
- Temporary Chip Seal/Overlay Pavement Markers
- Solar Pavement Markers
- Marker Adhesive Material
- Glass Spheres



**Prismatic Retroreflective Pavement /Abrasion Resistant Marker  
Model 921/921AR Glassed Faced**

The Apex Prismatic Marker is made of a durable ABS Plastic Shell filled with an Inert Thermosetting Compound. The shell contains 1 or 2 glass covered Prismatic Retroreflective Faces as required to reflect light from single or opposite direction.

Overall Dimensions 3.89" x 4.15" x 0.76"  
Slope of Reflecting Face 32° to Base  
Area of each Reflecting Face 3.25 Sq./in

Distributor

Brewer Cote of Arizona "The Pavement Maintenance Specialists"  
www.brewercoteaz.com Tel. 623-931-3728 Toll 888-931-3728 Fax 623-842-0714 sales@brewercoteaz.com

# **CRACK•STIX®**

## **CSX™ 900 PRO-MELT TORCH**



**For Use With**

## **CRACK•STIX**

**DIRECT HEAT "Rubberized" Crack & Joint Sealant**

### **KEY PRODUCT FEATURES**

**Operates Continuously for over an Hour on a 14.1oz Cylinder**

**Machined Brass Fuel Valve for Precision Gas Flow Control**

**Rugged Torch Design with Soft Comfort Grip**

**Ergonomically Balances with a Fuel Cylinder Attached**

- **Custom Torch Tip**
- **Trigger Start**

Distributor

Brewer Cote of Arizona The Pavement Maintenance Specialists  
5226 West Missouri Avenue, Glendale, Arizona 85301

[www.brewercoteaz.com](http://www.brewercoteaz.com) Tel 623-931-3728 Toll 888-931-3728 Fax 623-842-0714 [sales@brewercoteaz.com](mailto:sales@brewercoteaz.com)



**CRACK-RITE™**

# **CRACK-STIX®**

## **CSX™ 1000 PRO-MELT TORCH**



Tank Not  
Included

40" x 5" x 20"

FOR USE  
WITH

# **CRACK-STIX®**

DIRECT HEAT "RUBBERIZED" CRACK & JOINT SEALANT

### KEY PRODUCT FEATURES

Rugged Torch Design • Custom Soft Comfort Torch Grip • Trigger Start • Steel Construction w / Steel Guide Wheel • Machined Brass Fuel Valve for precision Gas Flow Control • Burns Propane or Mapp gas (Use w / 20 lb. or 30 lb. tank) • Walk Behind Application • 20 ft Hose and Regulator • Ergonomically Balances with Fuel Cylinder attached

Distributor

Brewer Cote of Arizona "The Pavement Maintenance Specialists"  
5226 W Missouri Avenue, Glendale, Arizona 85301

[www.brewercoteaz.com](http://www.brewercoteaz.com) Tel.623-931-3728 Toll 888-931-3728 Fax 623-842-0714 [sales@brewercoteaz.com](mailto:sales@brewercoteaz.com)



# TITAN<sup>®</sup> SPEEDFLO<sup>®</sup>

## POWERLINER<sup>™</sup> SERIES

# 850



DirectLink<sup>™</sup>  
Pressure Control

Folding Handle  
Transport & Store Easily

37.7cc 4-Stroke Engine

Carries 5 Gal. Paint Pail  
Not Included

No Flat Tires  
Specially formulated for a smooth Ride

Reversible Gun Mount  
To Stripe off either Front or Rear Tire

Straight Lock or Free Wheel  
Front Coaster

LX-40 Spray Gun  
Removable LX-40 Spray gun with in handle  
filter and SC-6" reversible spraying tip

### Recommended for Light Periodic-Duty on Small Parking Lots and Athletic Fields

The Powerliner 850 is Designed for entry level Contractors and Maintenance Personnel who need a Basic Line Striper capable of High-Spraying pressures for small jobs on pavement, grass or turf. DirectLink<sup>™</sup> pressure control allows the user to Stencil and Paint with Airless Technology at pressures from 200 psi to 3000 psi.

### PowerLiner 850 Specifications

Max Delivery	.33 gpm	Engine, Gas	37.7 cc
Max Operating Pressure	3000 psi	Weight (Empty)	70 lbs.
Max Tip Size (1 Gun)	0.021"	Part Number	029005

Distributor

**Brewer Cote of Arizona "The Pavement Maintenance Specialists"**

5226 West Missouri Avenue, Glendale Arizona 85301

www.brewercoteaz.com Tel 623-931-3728 Toll 888-931-3728 Fax 623-842-0714 Sales@brewercoteaz.com



# TITAN<sup>®</sup>

## Glass Bead Dispensers



### Why Titan Glass Bead Dispensers?

Titan Tool incorporated glass bead dispensing systems are designed to deposit retro-reflective glass beads on traffic paint lines. These systems are complete with 50 lb. capacity hopper that accepts a full bag of beads, a single or dual dispenser with all hoses, fittings and hardware required for operation. The dispenser is mounted directly behind the spray gun.

**These Systems are Gravity Flow Units. No Air or Auxiliary Power is required for Operation**

When the gun is actuated, the bead dispenser door opens simultaneously with the gun. A shower of beads the width of the dispenser is then deposited onto the wet paint line. The amount of beads dispensed is easily adjustable using only a screw driver (6 lbs. of beads per gal. is a good rule of thumb). These dispensing systems are available in combination 4" and 6" widths as well as 12" widths. The various widths are interchangeable. Single Gun kits are standard with optional second gun kits available.

Kits come complete with hopper dispensers hoses and all mounting hardware required for operation (Tools not included)

Quick connect swivel fittings linkage provide ease of installation and removal when painting lines where beads are not needed

#### **6" Bead Dispensers & Kits**

Bead Dispenser Kit 6" Single 424-826  
Bead Dispenser Kit 6" Dual 424-836  
Second Gun Kit 6" 424-816  
Bead Dispenser only 6" BD-600G

Pre-Drilled and Tapped holes in frame make mounting the bead hopper very easy. Durable powder coated hopper and mounting brackets

Flow of beads is controlled by adjusting the slide plate opening behind door. Dual plates allow selecting 4" or 6" widths

#### **12" Bead Dispensers & Kits**

Bead Dispenser Kit 12" Single 424-840  
Second Gun Kit 12" 424-841  
Bead Dispenser Only 12" BD-1200G

#### **Distributor**

**Brewer Cote of Arizona "The Pavement Maintenance Specialists"**

5226 West Missouri Avenue, Glendale Arizona 85301

www.brewercoteaz.com Tel 623-931-3728 Toll 888-931-3728 Fax 623-842-0714 sales@brewercoteaz.com



## BAG STRAINERS

Remove dried flakes, lumps, filaments and other dust particles from all types of paints, stains and liquids.

5 gal.

Box 25 each

**Distributor**

**Brewer Cote of Arizona**

**The Pavement Maintenance Specialists**

**5226 West Missouri Avenue Glendale Arizona 85301**

**www.brewercoteaz.com Tel 623-931-3728 Toll 888-931-3728 Fax 623-842-0714 sales@brewercoteaz.com**

# Roklin Concrete Slab Stabilization Technique

Roklin Systems Inc.'s method of restoring structure to compromised slabs uses a fraction of the time of conventional repairs at a fraction of the cost of full-depth replacement. With minimal or no prep required, using rapid-setting polymers and polymer-coated aggregate, slabs can be restored and returned to traffic in as little as one hour. The process, know as "Concrete Welding" can extend the life of the slab by as much as five years, subject to the existing conditions, the type of loads and ADT (Average Daily Traffic), as shown here on the Northbound Interstate 5 through Lebec California .



*The area featured has sunk 2" to 3" below grade and has significant voids below the surface. Prep is a simple blast of compressed air to remove any loose debris and dirt at the surface.*



*The area, now clean and dry, is flooded with the Low-Viscosity Concrete Welder polymer which flows freely into the voids.*



*The rapid-setting polymer sets up quickly, allowing for a free flow into the void and then, when gelling, creates a back-fill point.*



*Once sealed and stabilized a 3/8" polymer-coated Basalt known as "Black Diamond" is placed into the depressed area to just below grade.*



*The area is leveled off with a simple 2x4 or straight edge and another pass of Concrete Welder is made to cement the Black Diamond into position.*



*A polymer-coated #3 rounded aggregate is then sprinkled into the base of Black Diamond which provides stability and a good mechanical interlock.*



*Another pass of Concrete Welder locks the #3 and 3/8" Black Diamond into position.*

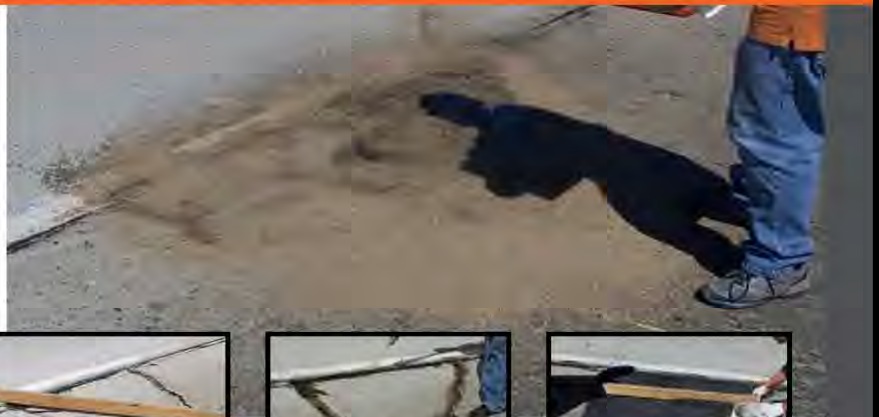


*A final pass of #3 coated sand provides a high-traction surface ready for traffic in 10 minutes or less.*



*One month later the restored slab is still holding up well while the untreated slab continues to deteriorate.*

# CONCRETE WELDER



**CONCRETE WELDER** is a very thin, rapidly setting, amber-colored polymer for concrete-slab stabilization and thin concrete crack repair.

When combined with aggregates, Concrete Welder can restore structure where absent in 2nd and 3rd stage cracked slabs very cost effectively, and in a fraction of the time of normal demolition and removal of an existing broken slab. Concrete Welder is packaged in 21-oz. cartridges for hand application or a 10-gallon kit, 30-gallon kit, or 100-gallon kit for machine application.

**CONCRETE WELDER 10-MINUTE REPAIR KIT** provides a quick and simple repair product for concrete cracks and minor damage. The liquid penetrates into small cracks where water would go. It forms a high-strength bond that sets up quickly to form a waterproof seal, preventing further damage. In minutes cracks are repaired, preventing larger and more costly repairs in the future.

## ROKLIN CONCRETE SLAB STABILIZATION TECHNIQUE

Roklin Systems Inc.'s method of restoring structure to compromised slabs uses a fraction of the time of conventional repairs at a fraction of the cost of full-depth replacement. With minimal or no prep required, using rapid-setting polymers and polymer-coated aggregate, slabs can be restored and returned to traffic in as little as one hour. The process, known as "Concrete Welding" can extend the life of the slab by as much as five years, subject to the existing conditions, the type of loads and ADT (Average Daily Traffic), as shown here on the Northbound Interstate 5 through Valencia, California.



Flip switch to the "start" position and turn speed dial to "10." Check the ratio on both "A" and "B" polymer by putting a small amount into a cup. Watch to make sure both sides flow evenly.



Allow cup to sit for approximately 3 minutes and ensure that material has hardened.



Clean the area, making sure there is no debris, moisture or dust. Sweep or use a small hand-blower. There is no need to remove broken concrete that is larger than 1/4 inch.



Stabilize rocking slab by injecting Concrete Welder into the joint until the slab is stabilized. (If not stabilized, the slab will be rocked by vehicles passing in adjacent lane.) Do not overfill.



Flood with Concrete Welder.



Cover with sand.

Distributor

Brewer Cote of Arizona "The Pavement Maintenance Specialists"

5226 West Missouri Avenue, Glendale Arizona 85301

www.brewercoteaz.com Tel. 623-931-3728 Toll 888-931-3728 Fax 623-842-0714 sales@brewercoteaz.com

# VARI-FLO POLYMER DISPENSING MACHINE

Roklin's VariFlo machine provides a quick and easy-to-use method for concrete and asphalt repair. There is minimal training required to use the VariFlo machine. The process begins with attaching the hoses, and flushing the lines to check that both flow evenly. When this is complete you are ready to apply your product.

## Many Options

The VariFlo machine can be used to repair all types of pavement. While designed for two-part polymers, the VariFlo machine can be used with any 1-to-1 ratio two-part product. VariFlo is available in different sizes and can accommodate different size drums ranging from 5 to 50 gallons.

The two machines that accommodate these various sizes of drums are highly portable. Both machines fit easily into the back of a small truck. The smaller machine can even be hand-lifted. The machine has a low-power consumption and can be run off a small generator or an inverter, needing only 24 volts.



## Control and Speed

The VariFlo machine has a variable volume delivery so material can be placed as quickly or as slowly as is needed. The mixing tips are simple to swap and allow for placement in small cracks or flowed across widespread damage. VariFlo applications allow significantly faster placement of materials. It is less labor intensive. The low viscosity material applied with VariFlo allows for easy, controllable flow into cracks or damage of any size, eliminating the need for removal or widening of cracks. VariFlo allows for slab stabilization with no removal, saving time, money and eliminating the need for damaged pavement disposal.

## Easy Maintenance and Upkeep

VariFlo is designed with open access to easily-changeable parts. Replacement parts are readily available and easy to install. When done using the machine, flush with Vegetable oil, dispose of mixing tip and store.

## Affordable

The VariFlo machine is an inexpensive option to effectively handle pavement repairs. Not only is it more affordable than other machines that perform similar functions, VariFlo is the more affordable polymer repair method. Using the VariFlo machine offers a 20-25% savings over our bucket repair method.



## Safe

Enclosed delivery ensures no leaks or spills. Users are not exposed to materials as the drums are connected directly to the hoses and swapped out when they are empty. Workers are on the road for a shorter time so they have much less exposure to traffic.

## Overall benefits to using VariFlo:

- Cleaner and faster
- Easier preparation
- Simple training
- Easy process and maintenance
- Safer

# VARI-FLO PDM INSTRUCTIONS

## START UP

**\* Do Not plug machine into outlet and operate without fluid materials attached to pumping unit. Never operate pumps dry. This can cause severe damage to the pumps.**



Check that all fluid and air hose fittings are securely attached. Make sure there are no kinks in the hoses.



Do not over-tighten JIC hose swivel fittings. It is not necessary to apply thread tape to JIC fittings



Attach drum hose and clamp to A and B containers, remove any air bubbles by loosening the clamps at the pump inlet and bending the clear tubing.



Speed dial on remote should be set at "0". Plug in the main power source. Have a bucket ready for the discharging material.



Turn to on and slowly adjust speed dial to 25 to allow pumps to be primed and fill the hoses. After a few seconds, the speed dial may be increased. Check for consistent flow.



Close gun valves back into closed position. Ensure that both drums have equal amounts.



Attach a static mixer to the gun end and secure with the mixer retaining nut and hand tighten.



Open gun valve handle. Turn the machine back on, increase speed dial to desired flow rate.

## OPERATING TIPS

**Always** vent the drums prior to application. If not vented they will collapse. Always store material closed tightly to prevent moisture contamination.

**Before** going out to the job site prepare and run the unit with material to ensure proper operation.

**Always** use a new static mixer when restarting after any break or interruption.

**When** applying the material be sure to close the gun valves before you air purge the mixer. Regularly purge the mixer when shutting off for more than a minute.

**Do** not use wet sand or aggregates.

**With** temperature increases, the material set time will increase. Colder temperatures will reduce it as well. Sand temperature and surface temperature can also be a factor.

**Always** be sure gun valves are closed first to clean and remove the gun manifold at the end of the day.

**Always** store the unit indoors at temperatures above 50°F. For more than a week, flush A-side hose with hydraulic oil. Before restarting, flush A-side hose for 2 minutes at a speed of 30.

**Replacement** parts for the pumps are available. Any work done by unauthorized personnel will negate any warranties.

### Distributor

Brewer Cote of Arizona "The Pavement Maintenance Specialists"

5226 West Missouri Avenue, Glendale Arizona 85301

www.brewercoteaz.com Tel 623-931-3728 Toll 888-931-3728 Fax 623-842-0714 sales@brewercoteaz.com





## **Power Vac 300**

**BC Power Vac 300 is a Skid Mounted Crack Cleaning System meeting Federal Pollution Reduction PM10**

**20hp Kohler Overhead Cam Air Cooled gas engine with 500 cfm Hg positive displacement blower, tach/Hour meter, silencer, 3 stage filtration system, 6 gal gas tank and curb side controls. 200 gal spoils tank complete with push button hydraulic dump and door latch, full open door.**

**Includes 3" suction hose from pump to swivel boom (10') mountable in truck, 3" x 20' hose to 3" lightweight Vacuum Wand, Wand includes 1/2" Air hose to Injection tip and replaceable Skid Disks.**

**System Built on Two Skids to be conformed to any Truck or Trailer, Boom can be attached to Power Unit or Deck**

# Brewer Cote® of Arizona



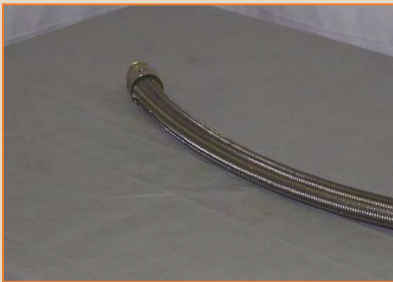
Rubber Hose  
w/Cover & Male  
Pipe Threads

# 27009 1" x 20'  
# 27026 1" x 25'  
*ask about other  
sizes*



Steel Hose w/Cover  
& Male Pipe Threads

# 487023 20' Hose  
# 487024 25' Hose



Hose  
Extension

#487022 24" Steel



Hose  
Cover

#27014 1" Cover



Rubber Hose  
Fittings

#487901



Swivels

#27048 1"  
#487293 3/4"



Crack Sealant  
Discs

#27163 4" Disc  
#27162 3" Disc



Crack Sealant  
Shoes

#488650 6" Shoe  
w/valve tip  
#488570 6" Shoe



Steel Ball Valves

#29240 1"  
#487296 3/4"  
*ask about other  
sizes*

Valve Handles  
#27080



Sealant Tips

#27171 1/2" Steel Tip  
#27170 3/8" Steel Tip  
#488660 1/4" Steel Tip

The FV-11 Utility Torch is Built Tough, with all Welded and Steel Construction. These Torches are ideal for Weed Burning, Asphalt Feathering, Stump Burning, Spot Drying, Heating & Thawing, as well as many other commercial and agricultural uses.

Our Exclusive Valve-Orifice assembly allows this torch to operate safely at tank Pressure, eliminating the need for a pressure regulator.

It is Highly Recommended **that this Torch be operated in it's Kit Form**



- Easy to Use
- Simple Design
- Single Handle Use
- Fully Welded Construction
- Every Unit is Function Tested
- Shipped with HD Brass Valve

BTU Rating	400,000 @ Tank Pressure
Fuel	Vapor L.P. Gas (Propane)
Fuel Connection	<b>9/16"</b> – 18LH (Ball Seat)
Torch Head Diameter	2-7/8"
Gas Tube Material	3/8" Mild Steel
Length	32"
Weight	3 lbs.
Color	Blue

Distributor

Brewer Cote of Arizona **"The Pavement Maintenance Specialists"**

5226 W Missouri Avenue, Glendale Arizona 85301

www.brewercoteaz.com Tel. 623-931-3728 Toll 888-931-3728 Fax 623-842-0714 sales@brewercoteaz.com

**GUARANTEE**

All equipment is guaranteed to be free from defect in either material or workmanship. All equipment is guaranteed to the extent of operating specifications of the equipment. No claim will be allowed for subsequent damage caused by improper installation, improper use (misuse), neglect, or improper fuel and/or electrical supply (if applicable).

While this information is presented in good faith and believed to be accurate - Burners, Inc. does not guarantee satisfactory results from reliance upon such information. Nothing contained within this document is to be construed as a warranty or guarantee, expressed or implied, regarding the performance, merchantability, fitness or any other matter with respect to this product, nor as a recommendation to use this product in a specific application. Burners, Inc. reserves the right, without notice, to alter, or improve the designs or specifications of the product, described herein.

Primarily designed for the roofing & paving industries, the FV-15 hand torch is built tough and easy to use. With an adjustable standing pilot flame, the FV-15 torch is always ready to go. Just squeeze the trigger and a full force flame is released towards your work area.

The FV-15 has many other applications also, such as; shrink wrapping, industrial processing and floor & road drying.

**RECOMMENDED SYSTEM** - Burners, Inc. offers the FV-15-K for a complete torch system



- Easy To Use
- Cushion Grip Handle
- Fully Welded Construction
- Every Unit is Function Tested
- Kit Includes Torch Stand & Striker
- Squeeze Trigger with Standing Pilot

Specifications	
BTU Rating	520,000 @ 50 psi
Fuel	Vapor L.P. Gas (propane)
Fuel Connection	9/16" - 18 LH (Ball Seat)
Torch Head Diameter	2"
Material	Mild Steel & Brass
Length	32"
Weight	2-1/2 lbs.
Color	Blue & Black

visit us online: [www.burnersinc.com](http://www.burnersinc.com)

### GUARANTEE

All equipment is guaranteed to be free from defect in either material or workmanship. All equipment is guaranteed to the extent of operating specifications of the equipment. No claim will be allowed for subsequent damage caused by improper installation, improper use (misuse), neglect, or improper fuel and/or electrical supply (if applicable).

While this information is presented in good faith and believed to be accurate - Burners, Inc. does not guarantee satisfactory results from reliance upon such information. Nothing contained within this document is to be construed as a warranty or guarantee, expressed or implied, regarding the performance, merchantability, fitness or any other matter with respect to this product, nor as a recommendation to use this product in a specific application. Burners, Inc. reserves the right, without notice, to alter, or improve the designs or specifications of the product, described herein.

Burners, Inc. utility torches are built tough, with all welded and steel construction. These torches are ideal for weed burning, asphalt feathering, stump burning, spot drying, heating & thawing, as well as many other commercial and agricultural uses.

With the ability to operate on tank pressure, these torches are designed for simple convenience.



- Easy To Use
- Simple Design
- Single Hand Use
- Fully Welded Construction
- Every Unit is Function Tested
- Shipped with HD Brass Valve
- Complete With 10' Hose & Tank Connector

Specifications	
BTU Rating	200,000 @ Tank Pressure
Fuel	Vapor L.P. Gas (propane)
Fuel Connection	CGA - 510
Torch Head Diameter	1-7/8"
Gas Tube Material	1/4" Mild Steel
Length	32"
Weight	2.8 lbs.
Color	Blue

visit us online: [www.burnersinc.com](http://www.burnersinc.com)

### GUARANTEE

All equipment is guaranteed to be free from defect in either material or workmanship. All equipment is guaranteed to the extent of operating specifications of the equipment. No claim will be allowed for subsequent damage caused by improper installation, improper use (misuse), neglect, or improper fuel and/or electrical supply (if applicable)

While this information is presented in good faith and believed to be accurate - Burners, Inc. does not guarantee satisfactory results from reliance upon such information. Nothing contained within this document is to be construed as a warranty or guarantee, expressed or implied, regarding the performance, merchantability, fitness or any other matter with respect to this product, nor as a recommendation to use this product in a specific application. Burners, Inc. reserves the right, without notice, to alter, or improve the designs or specifications of the product, described herein.



## Gingway Brush Box

11" deep x 16" Tall – 16 gauge Metal Box with Hinged lid.  
We use  $\frac{3}{4}$ " x 9 ga expanded metal to hold brush 2" from bottom.

Adjustable Holder for Handles.

1" NPT Drain with mounting angles to secure box

40" Long for 36" Brush  
40" Weights 59 lbs.

52" Long for 48" Brush  
52" Weights 73 lbs.

Distributor

Brewer Cote of Arizona "The Pavement Maintenance Specialist's"  
5226 West Missouri Avenue, Glendale Arizona 85301

[www.brewercoteaz.com](http://www.brewercoteaz.com) Tel 623-931-3728 Toll 888-931-3728 Fax 623-842-0714 [sales@brewercoteaz.com](mailto:sales@brewercoteaz.com)

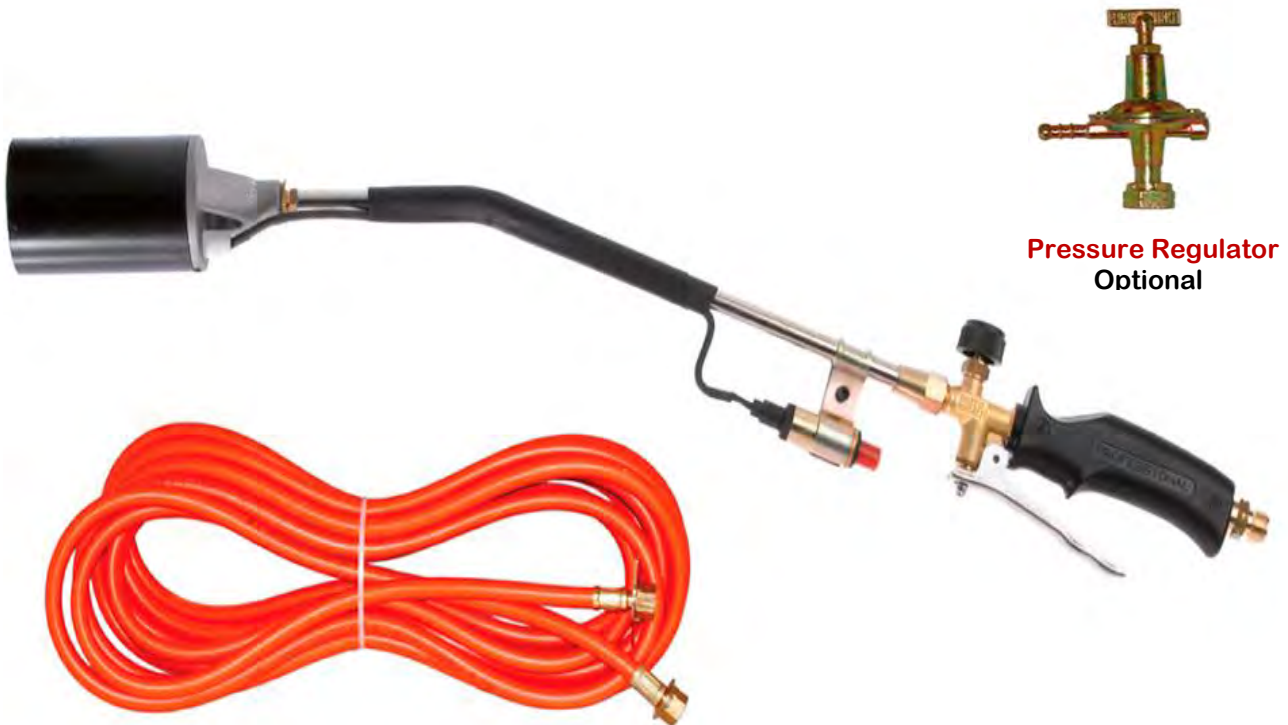


# idealgas

Manufacturing Since 1962

Made in Italy

## TRIGGER TORCH KIT PIEZO IDEAL-PERFORMANCE



Pressure Regulator  
Optional

### FEATURES

- PIEZO (Push) Ignition
- Lever Handle
- 60mm Special Turbo Burner
- 600mm Rod (Available in 350mm also)
- 85 kw of Power
- 25 ft Rubber Hose (100% NBR)
- Optional Pressure Regulator

Distributor

Brewer Cote of Arizona "The Pavement Maintenance Specialists"

5226 West Missouri Avenue, Glendale Arizona 85301

www.brewercoteaz.com Tel 623-931-3728 Toll 888-931-3728 Fax 623-842-0714 sales@brewercoteaz.com

# LITTLE WONDER®

## Pro Crack Cleaner



54" L x 17" W x 33" H  
without Handle Extension  
Weight 77 lbs.

### Larger Brush. Dual Belts. More Power.

The Pro Crack Cleaner cleans cracks and crevices in asphalt and concrete surfaces quickly and easily. Clearing away debris and undergrowth is extremely important before laying down crack filler and applying sealant. Dual belts to the brush clear crevices quicker and more thoroughly. Backed by a 1 year warranty.

### FEATURES

Honda® GX120 engine 3 yr. Warranty

Dual belt drive provides extra power to the brush and reduces slippage during application.  
Large heavy-duty 9" diameter twisted wire wheel brush ideal for cleaning out joints & cracks

Brush depth adjustable up to 4"

Brush shield keeps debris off the belts

Convenient controls adjust depth, belt tension, & brush engagement from the operator's position

Anti-vibration grip for user comfort – Extension Handle optional

Four wheel design provides extra stability and eliminates the need for a curb wheel

All wheels have steel hubs w/ ball bearings, full axles front & rear for smooth easy maneuverability

Large gas tank size 3 qt Capacity - reduces refueling intervals

Distributor

**Brewer Cote of Arizona "The Pavement Maintenance Specialists"**

5226 West Missouri Avenue, Glendale Arizona 85301

www.brewercoteaz.com Tel 623-931-3728 Toll 888-931-3728 Fax 623-842-0714 sales@brewercoteaz.com





## Asphalt Broom/Brush Heads

MARSHALLTOWN has an assortment of Asphalt Broom/Brush Heads to fit your preference. Our Street/Asphalt Brooms come with either Polybase Plastic or Palmyra Stalk bristles and are great for general sweeping prior to resurfacing. The Wire Scraper Brush is an oil spot brush with a scraper for hard to reach, stubborn stains. It comes with 2" bristles. The Wire Street Broom and Wire Broom are both built strong to withstand heavy duty cleaning of driveways and parking lots. The Wire Street Broom has 3" coated steel wire bristles whereas the Wire Broom has 5" bristles that are ideal for cleaning oil or grease spots. All MARSHALLTOWN Broom/Brush Heads work with a Tapered Handle and are Made in the USA with Global Materials.

### Street or Asphalt Brooms

- For general sweeping prior to resurfacing
- 1 $\frac{1}{8}$ " (28mm) diameter tapered wood handles sold separately



### Wire Scraper Brush

- Oil spot brush with scraper for hard to reach stubborn stains
- 2" (51mm) bristles
- 1 $\frac{1}{8}$ " X 60" (28mm X 1524mm) tapered wood handle sold separately





## Wire Broom

- Ideal for cleaning oil or grease spots
- Built strong to withstand heavy duty cleaning of driveways and parking lots
- 5" (127mm) bristles
- 1<sup>1</sup>/<sub>8</sub>" X 60" (28mm X 1524mm) tapered wood handle sold separately



## Wire Street Broom

- Coated steel wire
- Built strong to withstand heavy duty cleaning of driveways and parking lots
- 3<sup>3</sup>/<sub>4</sub>" (95mm) bristles
- 1<sup>1</sup>/<sub>8</sub>" X 60" (28mm X 1524mm) tapered wood handle sold separately



Distributor

Brewer Cote of Arizona "The Pavement Maintenance Specialists"  
5226 West Missouri Avenue, Glendale Arizona 85301

[www.brewercoteaz.com](http://www.brewercoteaz.com) Tel 623-931-3728 Toll 888-931-3728 Fax 623-842-0714 [sales@brewercoteaz.com](mailto:sales@brewercoteaz.com)



## MARSHALLTOWN LUTE BLADE STYLES



## Magnesium Asphalt Lute Rake

MARSHALLTOWN Magnesium Asphalt Lutes are made with a lightweight, durable magnesium head. You have your choice between our standard Lutes, Braced Lute Rakes, or Lute Rakes w/ T-Connector. All our Magnesium Asphalt Lutes blades are 3" high and come with your choice of blunt, sharp, or plain depending on your preference. You can also choose your blade size, handle material, and handle length.

### Magnesium Lutes

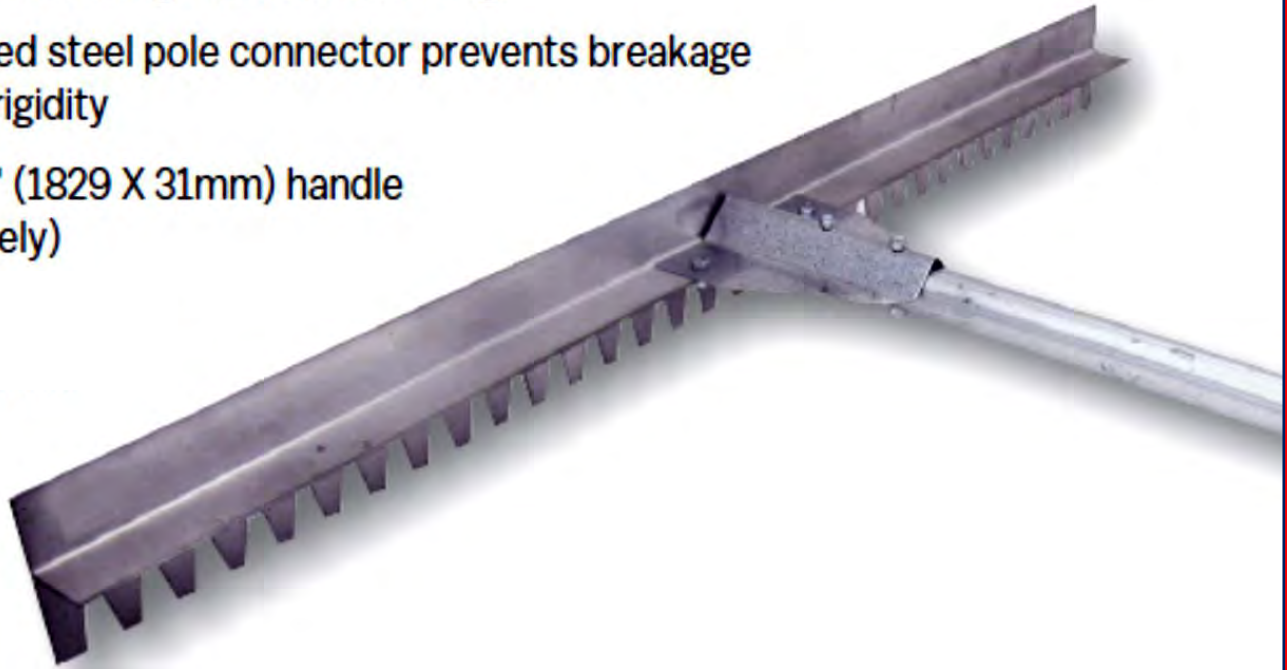
- Durable, lightweight magnesium head
- Square to round wood handle for better grip
- Used for smoothing and leveling fresh asphalt prior to compacting
- Easily replaceable blade, connector and handle





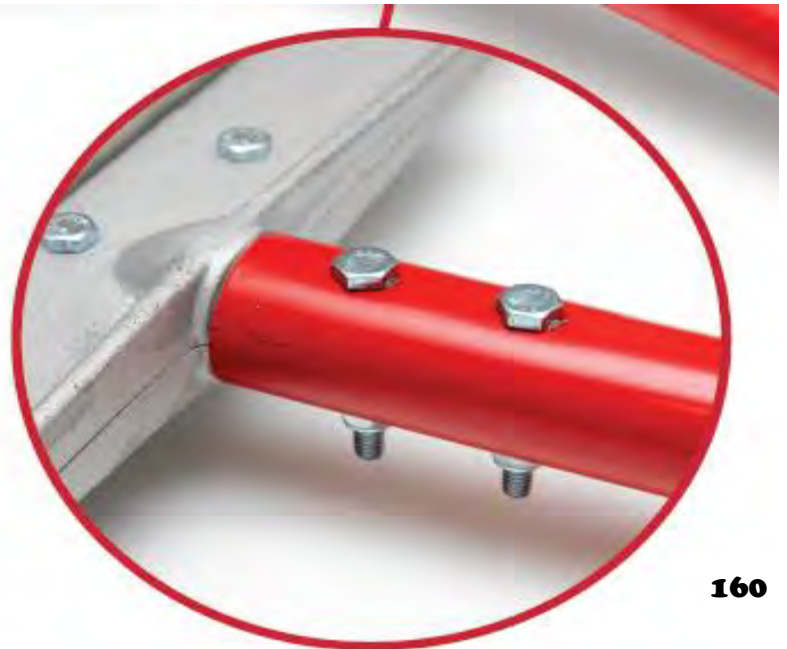
## Magnesium Asphalt Rake

- Lightweight "T" section blade has blunt teeth which are designed to allow material to pass through without catching
- Rugged formed steel pole connector prevents breakage and ensures rigidity
- 839 72 X 1<sup>1</sup>/<sub>4</sub>" (1829 X 31mm) handle (sold separately)



## Magnesium Lute Rakes with T-Connector

- Durable lightweight magnesium head
- Includes 1<sup>3</sup>/<sub>8</sub>" (35mm) aluminum handle available in three different lengths
- All parts are easily replaceable





## **Braced Magnesium Lute Rakes**

- Durable lightweight magnesium head
- Combination lute rake
- Gusset and metal braces with collar provide additional durability
- Aluminum handle
- All parts are easily replaceable



## **Lute Rakes with Wood or Fiberglass Handle**

- Durable lightweight magnesium head
- Combination lute rake
- Metal brace for more durability
- All parts are easily replaceable
- Wood or fiberglass handles available



Distributor

Brewer Cote of Arizona "The Pavement Maintenance Specialists"  
5226 West Missouri Avenue, Glendale Arizona 85301

[www.brewercoteaz.com](http://www.brewercoteaz.com) Tel 623-931-3728 Toll 888-931-3728 Fax 623-842-0714 [sales@brewercoteaz.com](mailto:sales@brewercoteaz.com)



## Asphalt Squeegees



## V-Shaped Squeegees

**MARSHALLTOWN** V-Shaped Crack Squeegees forces sealant down into cracks while pushing or pulling excess material. You have your choice of a "push," "pull," , Reversible Head or Reversible Head w/ snap connector. You can also choose either black neoprene or red silicone blade. The black neoprene has a temperature rating of 220° F (104° C) and the red silicone has a temperature rating of 392° F (200° C). All V-Shaped Crack Squeegees come with 54" wood handles.

## U-Shaped Squeegees

The **MARSHALLTOWN** U-Shaped Crack Squeegee works well with Pour Pots and leaves a wider path of sealant. For U-Shaped Crack Squeegees, we only offer push squeegees with a black neoprene blade. This product comes complete with a 54" wooden handle.



## Straight or Curved Squeegees

**MARSHALLTOWN** Asphalt Squeegees are durable Aluminum and Steel Construction. Come's with a reversible Black Neoprene Blade that has a durometer of 72 and a temperature rating of 220° F (104° C). You have your choice of Curved or Straight blade and Blade length. The Asphalt Squeegees come complete with a 60" handle.



Distributor

**Brewer Cote of Arizona "The Pavement Maintenance Specialists"**

5226 West Missouri Avenue, Glendale Arizona 85301

www.brewercoteaz.com Tel 623-931-3728 toll 888-931-3728 Fax 623-842-0714 sales@brewercoteaz.com



*If the brush application or delivery is critical...  
Power Brushes, Inc. is the company to call!*

## Straight Strip Trim Brushes

Strip brushes are commonly manufactured using our #4 and #7 backing. They can be made using a variety of materials with various trim lengths. We are able to make different variations of trims such as random, offset, and notch to accommodate a variety of industrial uses.

Synthetics	Polypropylene				Polyester
	6	6.6	6.12		
Stiffness Modulus Dry (PSI) x 1000*	745	375	512	450	450
Stiffness Modulus Wet (PSI) x 1000*	700	140	160	400	420
Water Absorption**	0.03%	10%	9%	3%	0.33%
Bend Recovery	75%	90%	90%	90%	90%
Softening Point (°F)	240°	300°	300°	300°	300°

\*Stiffness modulus based on: Dry 50% Humidity, Wet 100% Humidity

\*\*Water absorption from total immersion at room temperature

Most synthetic material color is black or natural (milky white). The characteristics of the material remain the same regardless of the material color.

### Custom Materials

Conductive Synthetics, High Heat Synthetics, Mixes of Synthetics/Wire/Natural Fibers, Various Colors & Crimps.

### Wire

Can be very aggressive, withstands heat, available in Oil Tempered Steel, Stainless Steel, Phosphor Bronze & Brass.

### Natural Fibers

Horsehair, Tampico, Bassine and Union Mixes all offer unique properties.

All of the above except natural fibers are available in level or crimped.

**Level:** Filaments are Straight. 

**Crimped:** Filaments have a Series of Waves in each Filament. 

**Sizes:** 18"- 24"- 36"- 48"

### Distributor

Brewer Cote of Arizona "The Pavement Maintenance Specialists"

5226 W Missouri Avenue, Glendale Arizona 85301

www.brewercoteaz.com Tel. 623-931-3728 Toll 888-931-3728 Fax 623-931-3728 sales@brewercoteaz.com

# Surfa • Slick

## MAGNESIUM ASPHALT LUTES



Skillful lute operators are vital to completing a smooth mat finish. Providing the right equipment will help prevent operator fatigue, accidents and help lower overhead expense. **Surfa • Slick** magnesium asphalt lute rakes are lightweight, rugged and will provide a finish your customers will appreciate. Our asphalt lutes have the strength and spring of steel and yet are one third lighter than aluminum. Each magnesium handle and lute bar are resistant to abrasion and dissipates heat quickly. The bar is joined to the handle with heavy duty casting that creates a rigid connection superior to weaker braced connections. The lute bar's serrated edge is formed with slightly blunted points and rounded notches to permit material to pass through without jamming. Bars are available in two formats, serrated and smooth or smooth top and bottom. Handles are available in lengths ranging from 6' to 8'4" and are also available in fiberglass when conditions require a nonconductive element. All of us at **Surfa • Slick** are proud to provide you with the latest achievements in lute design and quality. We think you will agree by the long life of each of our products that **Surfa • Slick** is committed to serving you today as well as tomorrow. So, when you think of asphalt lutes, think of **Surfa • Slick**.

### FEATURES

- MAGNESIUM WEIGHS  $\frac{2}{3}$  OF ALUMINUM-  $\frac{1}{4}$  OF STEEL
- STRENGTH AND SPRING OF STEEL
- HIGH THERMAL CONDUCTIVITY
- DISSIPATES HEAT QUICKER THAN ALUMINUM
- EASILY RECYCLED MATERIAL

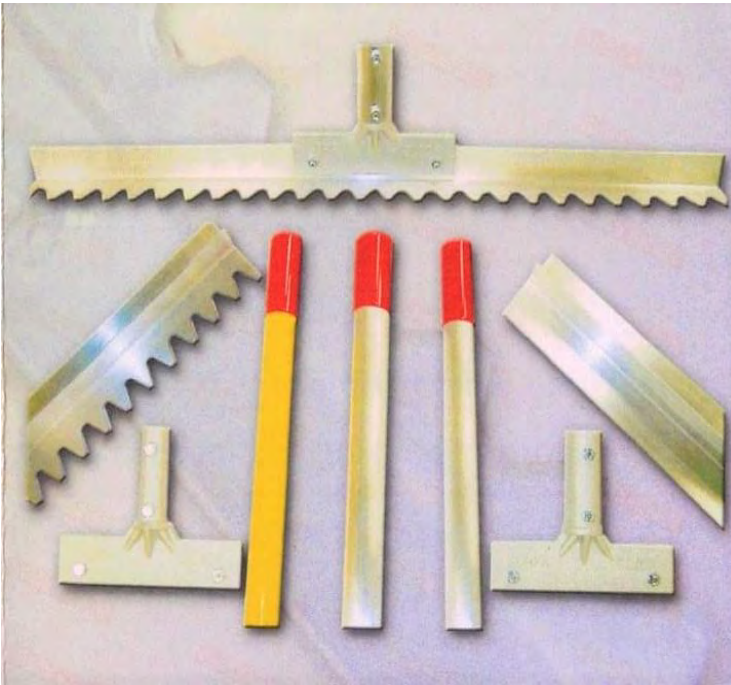
### BENEFITS

- LESS OPERATOR FATIGUE
- LONG LASTING-WEARING TOOL EXCELLENT VALUE
- LESS ASPHALT BUILDUP ON TOOL
- COOLER TO USE
- ENVIRONMENTALLY FRIENDLY



Distributor





Our **6' Surfa-Slick Magnesium Asphalt Lute** with serrated lute blade comes in all Handle lengths and with our award- winning **T-Bar Brace** that will keep the bar and handle feeling strong and tight together. If you need to do more luting or handwork on your paving project, this lute will feel lighter because it is one-third lighter than aluminum. This Surf-Slick Magnesium Lute will make you feel like you aren't even working. The added leverage you get with a shorter handle makes a lot of luting in one day possible and won't wear out your lute girl. Our T Adaptor brace works well in this condition as it holds the shorter lute handle more firmly to the magnesium lute blade. Your lute person will like the way this large 1.5" diameter lute handle feels. You want a flat mat but not a flat lute. Buy this one for your puddle maker and he won't put it down for the driver to run it over again.



**LUTE BARS COME IN 5 SIZES**  
 24"-30"-36"-42"-48"  
**HANDLES AVAILABLE IN 4 LENGTHS**  
 6' X 1 1/2" DIAMETER  
 7' X 1 1/2" DIAMETER  
 8'4" X 1 1/2" DIAMETER  
 6'9" X 1 1/4" DIAMETER  
**FIBERGLASS HANDLES**  
 8'4" X 1 1/4" DIAMETER  
 Fiberglass Handle Tested to a Conductivity  
 Breakdown Point of 58.9 kilovolts



**On Sale Now**

tel. 623-931-3728 • toll 888-931-3728 • fax 623-842-0714 • www.brewercoteaz.com • sales@brewercoteaz.com

# WARRIOR DIAMOND, INC.



**14 HP**



**22 HP**

## RAPID RABBIT™ CRACK CHASERS & SAW BLADES

The Industry's Fastest, Easiest to Use Equipment for Routing Random Cracks in Concrete & Asphalt  
Available in 14 HP & 22 HP Subaru Gas Engines for Every Size Job

### ◇ FEATURES ◇

- ◇ Extremely Operator Friendly
- ◇ Center Mounted Blade makes following random cracks easy & accurate
- ◇ Rapid Rabbit™ Crack Chasers are safer to operate than carbide cutter units
- ◇ Eliminates percussive fractures often caused by carbide cutters
- ◇ Uses Warrior Diamond, Inc. Blades for extra smooth routing of even the most erratic random cracks
- ◇ Depth of cut indicator directly in operator's line of sight, minimizes cutting too deep & saves on Sealant costs
- ◇ Patented Z-Triangle Arbor prevents blade from turning on Arbor, eliminating the need to replace expensive spindle shafts
- ◇ Produces a perfect Sealant Reservoir for maximum pavement life
- ◇ Standard Options include dry cutting with Spray Mist & Vacuum Attachment
- ◇ Push button Electric Depth Control on the handle
- ◇ Subaru Engine with cyclone air filter for extended engine life

Distributed By

**BREWER COTE OF ARIZONA INC® THE PAVEMENT MAINTENANCE SPECIALISTS**

5226 W. MISSOURI AVENUE, GLENDALE ARIZONA 85301

www.brewercoteaz.com • tel. 623-931-3728 • toll 888-931-3728 • fax 623-842-0714 • sales@brewercoteaz.com

# WARRIOR DIAMOND, INC.

Model	RR 14	RR 22
Materials Cut	Cured Concrete & Asphalt	Cured Concrete & Asphalt
Blade Width	.250" – 375" – 500"	.250" – 375" – 500" – 750"
Blade Rotation	Down-cut as viewed by Operator	Down-cut as viewed by Operator
Blade Shaft Speed	4600 rpm	4800 rpm
Cutting Depth	1 ½" (38mm) & 1 ¼" end of life	1 ½" (38mm) & 1 ¼" end of life
Dimensions		
Handle Up Most Position	43" x 24" x 50"	46" x 31" x 53"
Handle Down Most Position	62" x 24" x 29"	64" x 31" x 38"
Engine	14 HP (9.9KW) Subaru Robin Model EX-40 Air cooled, 4 Cycle, Single-Slat cylinder overhead valve Gasoline Engine	22 HP (16.4KW) Subaru Robin Model EH-65 Air cooled, 4 Cycle, V-Twin cylinder overhead valve Gasoline Engine
Starting System	Manuel recoil Starter/Electric Start with automatic Mechanical Compression Release and zero kick back	Electric Start with automatic Mechanical Compression Release and zero kick back
Air Filter	Duel element cleaner / Cyclone filter	Heavy Duty
Oil System	Oil Alert with automatic shut down Sensor	Oil Alert with automatic shut down Sensor
Blade Raise / Lower System	Electric actuated with switch on handle bar	Electric actuated with switch on handle bar
Handle	Three position adjustable	Three position adjustable
Wheels	Hard Polyurethane	Hard Polyurethane
Weight / Shipping Weight	270 Lbs	470 Lbs



Blade Diameter	Blade Thickness	Concrete Part #	Asphalt Part #
6"	0.250"	R62501	R62504
6"	0.375"	R63751	R63754
6"	0.500"	R65001	R65004
6"	0.750"	R67951	R67504

Approximate Existing Crack Width	Finished Routed Width
¼"	⅜"
⅜"	½"
½"	⅝"
¾"	⅞"

## AR-92

### Asphalt Release Agent

AR-92 is a water soluble release agent which prevents asphalt from sticking to the sides and bottom of truck beds. Proper application produces a rich foam which allows asphalt loads to easily slide from truck beds when tilted. Will not affect the composition of the asphalt mix.

#### Directions for Use

AR-92 is dispensed through standard proportioning valves. Standard dilution is 40 parts of water to 1 part AR-92.

Surface treated must be clean of any asphalt accumulation. Apply solution to sides, bed and spreader bar of the truck. For best results, fill truck with asphalt while the coating is still wet.

#### Safety Reminder

Consult Product Label and Safety Data Sheet (SDS) before use. Prior to using this or any cleaning product, make sure employees read and understand the hazard information found on the product label and Safety Data Sheet (SDS). The label and SDS will also provide information on handling precautions, protective equipment and first aid instructions which might be appropriate for this product.



#### Technical Specifications

Appearance	Yellow Liquid
Odor	Mild
pH (1% solution, 22°C)	7-8
Foaming	High
Flash Point	None
Rinsability	Complete
Stability/Storage	2 Years
Emulsification	Complete
Solubility	100%
Phosphate Content	None

#### Product Number

G5-55

#### Packaging

55 Gallon Drum

Distributor

Brewer Cote of Arizona The Pavement Maintenance Specialists

5226 W Missouri Avenue, Glendale, Arizona 85301

www.brewercoteaz.com 888-931-3728 sales@brewercoteaz.com

## PEC

### **Paving Equipment Cleaner**

Paving Equipment Cleaner is a heavy duty cleaner that can be used on a variety of asphalt related equipment to include:

- Truck Beds
- Racks & Shovels
- Paving Machines
- Rollers & Spreader Bars
- Wheelbarrows

Paving Equipment Cleaner is a ready to use product that can also be used to coat tools and equipment prior to use to keep them free of build-up.

#### **Directions for Use**

Spray, wipe or brush the object to be cleaned with PEC. Small objects may also be immersed, if desired. Allow cleaner to remain on surface until the asphalt is loosened.

#### **Safety Reminder**

Consult Product Label and Safety Data Sheet (SDS) before use. Prior to using this or any cleaning product, make sure employees read and understand the hazard information found on the product label and Safety Data Sheet (SDS). The label and SDS will also provide information on handling precautions, protective equipment and first aid instructions which might be appropriate for this product.



#### **Technical Specifications**

Appearance	Clear Liquid
Odor	Slight odor
pH	N/D
Foaming	None
Flash Point	159.8F
Rinsability	Complete
Stability/Storage	2 Years
Emulsification	Complete
Solubility	100%
Phosphate Content	None

#### **Product Number**

- G9-4CS
- G9-5G
- G9-55

#### **Packaging**

- 4 Gallon Case
- 5 Gallon Pail
- 55 Gallon Drum

#### **Distributor**

Brewer Cote of Arizona The Pavement Maintenance Specialists  
5226 W Missouri Avenue, Glendale, Arizona 85301  
www.brewercoteaz.com 888-931-3728 sales@brewercoteaz.com

# Solvit

## Tar & Asphalt Remover

A d-limonene based heavy duty degreaser & tar remover. Specially formulated with natural citrus based oils. Excellent for all cleaning tasks. Emulsifies and quickly removes grease & grime. Great for use on tools and equipment, flooring, siding and sidewalks.

### Directions for Use

**USAGE:** Application and coverage rate will vary depending on conditions. **FIRST AND FOREMOST** Solvit should be used full strength. For hard surfaces such as concrete, metal, wood, glass, ceramic and stone, the object may be sprayed, poured, brushed, blotted or soaked. Allow time for product to work, then agitate with a rag or stiff bristle brush and rinse away stain and residue with water. Repeat as needed. Thicker soils can be scraped to remove heavy deposits prior to application. Tools and equipment must be solvent resistant. **NOTE:** Objects to be cleaned should first be tested for compatibility, especially on paints and plastics. Do not use on plastic surfaces unless they are solvent resistant.

### Safety Reminder

Consult Product Label and Safety Data Sheet (SDS) before use. Prior to using this or any cleaning product, make sure employees read and understand the hazard information found on the product label and Safety Data Sheet (SDS). The label and SDS will also provide information on handling precautions, protective equipment and first aid instructions which might be appropriate for this product.

Distributor

Brewer Cote of Arizona The Pavement Maintenance Specialists  
5226 W Missouri Avenue, Glendale, Arizona 85301  
www.brewercoteaz.com 888-931-3728 sales@brewercoteaz.com



### Technical Specifications

Appearance	Orange Liquid
Odor	Citrus
pH	N/D
Foaming	None
Flash Point	115.4 F
Rinsability	Complete
Stability/Storage	2 Years
Emulsification	Complete
Solubility	100%
Phosphate Content	None

### Product Number

G8-QCS  
G8-4CS  
G8-5G  
G8-55

### Packaging

12 Quart Case  
4 Gallon Case  
5 Gallon Pail  
55 Gallon Drum

# SOLVALL

## Tar & Asphalt Remover

Solvall is a ready-to-use, water rinsable liquid, which quickly and easily removes coal tar sealer, asphalt sealer, crack sealer, roofing tar, mastic and tack coat from most washable surfaces. Formulated for use on tools, equipment, vehicles, sidewalks, flooring, siding, clothing and carpeting. Will breakdown the composition of the stain and emulsify so that it is rinsed away with water. It is non-foaming and evaporates slowly. SOLVALL will clean up fresh spills, splatters and oversprays, as well as, caked-on messes.

### Directions for Use

USAGE: Application and coverage rate will vary depending on conditions. FIRST AND FOREMOST Solvall should be used full strength. For hard surfaces such as concrete, metal, wood, glass, ceramic and stone, the object may be sprayed, poured, brushed, blotted or soaked. Allow time for product to work, then agitate with a rag or stiff bristle brush and rinse away stain and residue with water. Repeat as needed. Thicker soils can be scraped to remove heavy deposits prior to application. Tools and equipment must be solvent resistant. NOTE: Objects to be cleaned should first be tested for compatibility, especially on paints and plastics. Do not use on plastic surfaces unless they are solvent resistant.

### Safety Reminder

Consult Product Label and Safety Data Sheet (SDS) before use. Prior to using this or any cleaning product, make sure employees read and understand the hazard information found on the product label and Safety Data Sheet (SDS). The label and SDS will also provide information on handling precautions, protective equipment and first aid instructions which might be appropriate for this product.



### Technical Specifications

Appearance	Clear Liquid
Odor	Characteristic
pH	N/D
Foaming	None
Flash Point	118.4 F
Rinsability	Complete
Stability/Storage	2 Years
Emulsification	Complete
Solubility	100%
Phosphate Content	None
<b>Product Number</b>	<b>Packaging</b>
G11-QCS	12 Quart Case
G11-4CS	4 Gallon Case
G11-5G	5 Gallon Pail
G11-55	55 Gallon Drum

Distributor

Brewer Cote of Arizona The Pavement Maintenance Specialists  
5226 W Missouri Avenue, Glendale, Arizona 85301  
www.brewercoteaz.com 888-931-3728 sales@brewercoteaz.com



# LAB **Hot Air Lances**

MANUFACTURING

## Check Out the Rest - But Buy the Best

LAB Manufacturing-Engineering Combustion Systems for Over a Decade

### FLAME FREE

Quick Connect Fittings

Patented "Flame Free" Combustion System

Stainless Steel Construction

Stainless Steel Burner Tube

**Options**

Wheel Kit, Debris Guard, Ignition System and Comfort Grip Handle

Industrial Hose Kit  
Abrasion Resistant Hose Cover  
40', 50', 60'

LP Regulator with Gauge

Shoulder Strap

High Flow Air Filter

- ▲ Patented "Flame Free" Combustion system properly cleans and dries Asphalt and Concrete Cracks, Joints and Potholes in one easy step
- ▲ High Velocity Hot Air quickly prepares Sealant reservoir – maximizing sealant adhesion
- ▲ No Flame means no Surface Impingement – cleans and dries faster than conventional torches
- ▲ In Seconds, the Hot Air Lance dries, cleans and prepares cracks / joints for sealant application
- ▲ Precision Engineered to outperform the competition
- ▲ Balanced for One-handed use, Anyone can be taught to be a skillfull operator in a matter of minutes
- ▲ Adjustable Temperature / Volume Controls for maximum effectiveness and economy
- ▲ Built with Pride in the USA



# The Best Hot Air Lance in the Industry for Drying and Cleaning Pavement Cracks, Joints and Potholes

Patented Combustion System for guaranteed performance

Rugged Stainless Steel Construction for years of trouble free operation



Stinger All in One Portable Heat Lance



Hot Shot / Classic Model B / Blaster Model C

LAB Hot Air Lances blast out dirt & debris with Hot Compressed Air. They Draw out moisture from cracks without “over cooking”; lifting off oxidized surface leaving a warm, dry surface, properly prepared sealant adhesion.

Hot Air dries more thoroughly because it expands surfaces faster under any conditions, particularly inclement weather. Unlike flame, Hot Air completely extracts moisture leaving smooth, clean surfaces that are ready for sealant application

We at LAB are committed to providing you, the Customer, the best and most versatile Hot Air Lance in the industry. This Lance is an integral part of the whole package and may be purchased by itself.

However, we offer a complete kit which includes everything you need to conduct your business in the most efficient, economical and profitable way possible. All you need is an air compressor and propane tank to begin successful operation.

## How does A Hot Air Lance Work?

Lab Heat Lances burn vapor propane and mix it with super-heated compressed air in a specially designed and patented combustion chamber. High velocity hot air is produced and directed towards the pavement surface. Since no flame touches the pavement, you can fill cracks immediately behind the lance operator without the worry of burning or charring the pavement surface

## Which Model Suits You?

In order to produce enough velocity, you must have a good air supply of compressed air to effectively and Quickly clean and dry pavement cracks, joints and potholes. The more air you provide the better the performance. Which lance is right for you? The major difference is the volume of air-supply. What size is your compressor? Use chart for reference.

### Compressor Size

60 – 100 cfm  
100 – 185 cfm  
150+ cfm

### Best Performance

Hot Shot  
Classic Model B  
Blaster Model C

## Complete Package Includes

Hot Air Lance Unit  
(Hot Shot - Classic - Blaster)  
Hose Assembly/ Cover  
(40'-50'-60')  
Shoulder Strap

Heavy Duty Air Filter  
LP Regulator & Gauge  
Quick Connect Fittings  
Safety & Operation Manual  
Warranty Card



# The New, Stronger **LITTLE WONDER**<sup>®</sup> **OPTIMAX BLOWERS**

You should have a blower this powerful and easy to use.

## The Optimax Concept

- Optimum performance / Maximum output from our aerodynamic fan and housing
- Controllable airflow from our split stream deflector makes you more productive
- Solid construction stands up to your everyday work conditions



## Redesigned From The Base Up

We started with a simple objective: improve the world's most productive wheeled blower by making it easier to use and more durable than ever. The result is that the new Optimax blowers set a new standard in performance and ease of use.



### Fans

Reverse angle steel fans provide power. These fans are stronger than ever, built with the advanced welding technology. The blades are stamped from a single piece of 10 gauge steel and then welded to the hub with a precision robot to create a solid connection. The 270cc and larger fans are dual plane balanced to tighter tolerance—to reduce stress and vibration.



Steel scrolled housing.

### Optimal Control

Shaping the inlet air allows us to deliver a smoother less turbulent output. Splitting the output air into 2 streams keeps debris under control. Adjust the chute for the conditions and job at hand quickly and easily, then let the blower do the work. Even our discharge chute is low and wide—to provide a more effective air pattern.



Housing weld.

### Solid Connections, Rugged Design

Continuously welded housing, a 1 piece lower deck, single tubular lower frame, 2 bolts for the upper handle connection all show the importance we placed on a machine that lasts.



## Asphalt Brooms

MARSHALLTOWN's Asphalt Broom and Coarse Asphalt Broom both come with a handle included. Our Asphalt Broom has a 24" steel blade scraper and is great for removing ice, snow, construction clean-up, and other compacted debris. The bristle side works as a heavy duty industrial broom and has braces for extra stability and strength. The Coarse Asphalt Broom, also 24", is a brown plastic garage brush used for wet or dry sweeping of rough concrete or asphalt floors. It won't soften when exposed to water or oils. Both brooms are Made in the USA with Global Materials.

### Coarse Asphalt Broom

- Coarse 24" (610mm) brown plastic garage brush used for wet or dry sweeping of rough concrete or asphalt floors
- Will not soften when exposed to water or oils
- 1<sup>1</sup>/<sub>8</sub>" X 60" (28mm X 1524mm) threaded handle included



### Asphalt Broom

- 24" (610mm) attached steel blade scrapes and removes ice, snow, construction clean-up and other compacted debris
- Conveniently turns over to convert to a heavy duty 24" (610mm) wide industrial sweeping broom
- Braces provide extra stability and strength
- Handle included



Distributor

Brewer Cote of Arizona "The Pavement Maintenance Specialists"  
5226 West Missouri Avenue, Glendale Arizona 85301

[www.brewercoteaz.com](http://www.brewercoteaz.com) Tel 623-931-3728 toll 888-931-3728 Fax 623-842-0714 [sales@brewercoteaz.com](mailto:sales@brewercoteaz.com)