



**Manufacturer of Reflective and Non-Reflective Pavement Markers**

- Reflective Pavement Markers
- Reflective & Non-Reflective Ceramic Pavement Markers
- Non-Reflective Plastic Pavement Markers
- Temporary Chip Seal/Overlay Pavement Markers
- Solar Pavement Markers
- Marker Adhesive Material
- Glass Spheres



Type: 932  
2-Y Two-Way Yellow



Type: 932  
1-W One-Way White



Type: 932  
2-Y Two-Way Yellow  
Double Cover



Type: 932  
1-W One-Way White  
Double Cover

**Chip Seal / Overlay Temporary Markers  
Model 932**

The polyurethane body of Apex Temporary Markers have great bending memory. The retroreflective tape is protected from oil and dirt by a clear plastic cover. Excellent for Chip Seal, Slurry Seal, or Temporary Delineation. Apex Chip Seal Markers have a minimum reflectance of 1800 Candle Power per foot-candle per Sq. Ft. and 0.10° observation and 0° entrance angle.

**REFLECTIVE TAPE**

Reflective tape shall be affixed along the top of the vertical section of the marker body on one or both sides. Reflective tape shall be .250" wide by 4.0" long metalized polycarbonate microprism retroreflective material with acrylic backing or equal, providing the following minimum optical performance with an observation angle of 0.2 deg, measured in candle power.

Entrance Angle	Specific Intensity
White 0°	3.5
White 30°	2.7
Amber 0°	3.0
Amber 30°	1.7

**ADHESIVE**

The factory applied adhesive to the marker base for bonding the marker on the pavement is a solid butyl rubber 1/8" thick, 3/4" wide on 1" wide release paper.

Markers available with no plastic cover, a single plastic cover with a single staple , or two plastic covers with three staples.

**Distributor**

**Brewer Cote of Arizona "The Pavement Maintenance Specialists"**  
5226 W. Missouri Avenue, Glendale Arizona 85301

www.brewercoteaz.com Tel. 623-931-3728 Toll 888-931-3728 Fax 623-842-0714 sales@brewercoteaz.com



# PREMIUM GLASS BEADS

### REFRACTIVE INDEX

The Beads have a refractive index of 1.5 when tested by the oil immersion method

### MOISTURE CONTENT

Does not exceed 0.01%

### SPECIFIC GRAVITY

Beads shall have a specific gravity between 2.40 & 2.60 @ 25° C  
Per ASTM D-153 Method A

### CHEMICAL STABILITY

Refluxing of a 50g sample of beads in a Soxhlet extraction apparatus for 8 hrs. with distilled water shall not produce more than a very slight reduction in luster or reflecting power of the beads

### FLOW

Beads shall be free flowing. A 23kg sample of beads, when emptied into service box screen Having sieve openings of 1.18mm (US Standard Sieve#16) shall pass completely through the Screen without shaking or any excessive hand manipulation.

### GRADATION

Catrans Specifications for Type II  
(8010-004 Dated Dec.22, 2009)

Sieve Opening	US Standard Sieve	% by Weight Passing
600 um	#30	100
250 um	#60	40-70
180 um	#80	15-35
106 um	#140	0-0.5

AASHTO Designation  
M247-13

Sieve Opening	US Standard Sieve	% by Weight Passing
1180 um	#16	100
850 um	#20	95-100
600 um	#30	75-95
425 um	#40	-
300 um	#50	15-35
180 um	#80	-
150 um	#100	0-5

### Distributor

Brewer Cote of Arizona The Pavement Maintenance Specialists

5226 W Missouri Avenue Glendale AZ 85301

www.brewercoteaz.com Tel. 623-931-3728 Toll 888-931-3728 Fax 623-842-0714 sales@brewercoteaz.com



## Manufacturer of Reflective and Non-Reflective Pavement Markers

- Reflective Pavement Markers
- Reflective & Non-Reflective Ceramic Pavement Markers
- Non-Reflective Plastic Pavement Markers
- Temporary Chip Seal/Overlay Pavement Markers
- Solar Pavement Markers
- Marker Adhesive Material
- Glass Spheres



4" Round  
Yellow / White



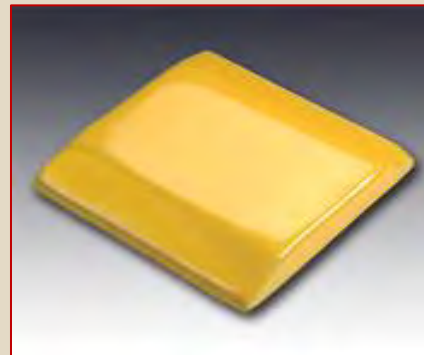
6" Round Channel  
Yellow / White



8" Round Channel  
Yellow / White



4" Oblong  
White



6" Jiggle Bar  
Yellow / White

### Apex Non-Reflective Ceramic Marker

Ceramic non reflective pavement marker glazed finish protects against weathering especially during rain, excellent day time visibility, available in high visibility white or yellow. A texture bottom helps them in place with epoxy. Ceramic non-reflective pavement markers Type A and Type AY consist of a heat-fired vitreous, ceramic base and a heat-fired opaque, glazed surface to produce the properties required in STANDARD SPECIFICATION JULY 2003, DOT, State of California.

#### Distributor

Brewer Cote of Arizona "The Pavement Maintenance Specialists"

5226 W. Missouri Avenue, Glendale Arizona 85301

www.brewercoteaz.com Tel. 623-931-3728 Toll 888-931-3728 Fax 623-842-0714 sales@brewercoteaz.com



**Manufacturer of Reflective and Non-Reflective Pavement Markers**

- Reflective Pavement Markers
- Reflective & Non-Reflective Ceramic Pavement Markers
- Non-Reflective Plastic Pavement Markers
- Temporary Chip Seal/Overlay Pavement Markers
- Solar Pavement Markers
- Marker Adhesive Material
- Glass Spheres



## NON-REFLECTIVE PLASTIC PAVEMENT MARKER

The 4" Non-Reflective Plastic Pavement Marker Conforms to the Following

Plastic Non-reflective pavement markers Types A & AY shall be, at the option of the Contractor, either Polypropylene or Acrylonitrile-Butadiene-Styrene (ABS) Plastic type.

Polypropylene non-reflective pavement markers shall consist of Polyester Resin Binder, inert organic filler material and colorant pigments and shall conform to The Provisions in California Standard Specifications 2010 Section 85-1.02B, "Non-reflective Pavement Markers."

ABS non-reflective pavement markers shall consist of ABS plastic conforming to the Requirements in ASTM Designation: D 4673, Designation ABS 1-2-2, and shall Conform to the provisions in California Standards Specifications 2010, Section 85-1.02B. The bottom of the ABS plastic pavement markers shall have areas of Integrally formed protrusions projecting from the surface to increase the Effective Bonding surface area & produce a structural bond with the pavement.

TEST	PROPERTIES	REQUIREMENTS
D	Luminance Factor, Type A White markers only, Glazed Surface	75 Min.
E	Yellowness index, Type A, White markers only, Glazed Surface	7 Max.
F	Color-yellow, Type AY, Yellow markers only, The chromaticity coordinates must be within a color box defined by California Test 669	Pass
G	Compressive Strength	1500 lb. Min.
I	Artificial weathering, 500 hrs. exposure, yellowness index	20 Max.

### Distributor

Brewer Cote of Arizona "The Pavement Maintenance Specialists"  
5226 W. Missouri Avenue, Glendale Arizona 85301

www.brewercoteaz.com Tel. 623-931-3728 Toll 888-931-3728 Fax 623-842-0714 sales@brewercoteaz.com



# Manufacturer of Reflective and Non-Reflective Pavement Markers

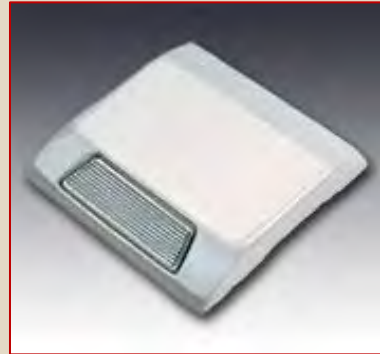
- Reflective Pavement Markers
- Reflective & Non-Reflective Ceramic Pavement Markers
- Non-Reflective Plastic Pavement Markers
- Temporary Chip Seal/Overlay Pavement Markers
- Solar Pavement Markers
- Marker Adhesive Material
- Glass Spheres



4" Round  
Two-Way Yellow



4" Round  
One-Way White



6" Jiggle Bar  
One-Way White



6" or 8" Round  
Two-Way Yellow



6" or 8" Round  
One-Way White

## Apex Retroreflective Ceramic Markers

The Apex Retroreflective Ceramic Markers combine the Power of Brilliant Night-time Visibility with Self-cleaning Glazed Surface for Exceptional Daylight Visibility.

### Distributor

Brewer Cote of Arizona "The Pavement Maintenance Specialists"

5226 W. Missouri Avenue, Glendale Arizona 85301

www.brewercoteaz.com Tel. 623-931-3728 Toll 888-931-3728 Fax 623-842-0714 sales@brewercoteaz.com



**Manufacturer of Reflective and Non-Reflective Pavement Markers**

- Reflective Pavement Markers
- Reflective & Non-Reflective Ceramic Pavement Markers
- Non-Reflective Plastic Pavement Markers
- Temporary Chip Seal/Overlay Pavement Markers
- Solar Pavement Markers
- Marker Adhesive Material
- Glass Spheres



**Prismatic Retroreflective Pavement /Abrasion Resistant Marker  
Model 921/921AR Glassed Faced**

The Apex Prismatic Marker is made of a durable ABS Plastic Shell filled with an Inert Thermosetting Compound. The shell contains 1 or 2 glass covered Prismatic Retroreflective Faces as required to reflect light from single or opposite direction.

Overall Dimensions 3.89" x 4.15" x 0.76"

Slope of Reflecting Face 32° to Base

Area of each Reflecting Face 3.25 Sq./in

Distributor

Brewer Cote of Arizona "The Pavement Maintenance Specialists"

www.brewercoteaz.com Tel. 623-931-3728 Toll 888-931-3728 Fax 623-842-0714 sales@brewercoteaz.com